

# NetVault Backup

Comprehensive protection for diverse IT environments

The success of your business depends on your ability to protect, access and leverage your mission-critical data on a daily basis — and restore it quickly in the event of an unexpected data loss. Yet many enterprises use data protection software that sacrifices functionality for simplicity, or scalability for versatility.

With NetVault® Backup, enterprises of all sizes can benefit from advanced, cross-platform data protection that is simple to use out of the box, and scales easily to accommodate data growth.

The software enables you to protect a massive number of servers containing petabytes of data — from one web-based console. It supports multiple operating system, applications, databases, processor architectures and storage devices. Such cross-platform versatility makes it easy for you to tailor NetVault Backup to match the ever-changing — and growing — landscape of your IT infrastructure.

## Features

**Application protection**—Ensure the availability of all of your businesscritical applications, including Oracle, SQL Server®, Exchange Server, SharePoint®, MySQL™, DB2®, PostgreSQL, Domino®, Informix, SAP®, Sybase® and Teradata®. No scripting is required to run “hot” backup and recovery jobs.

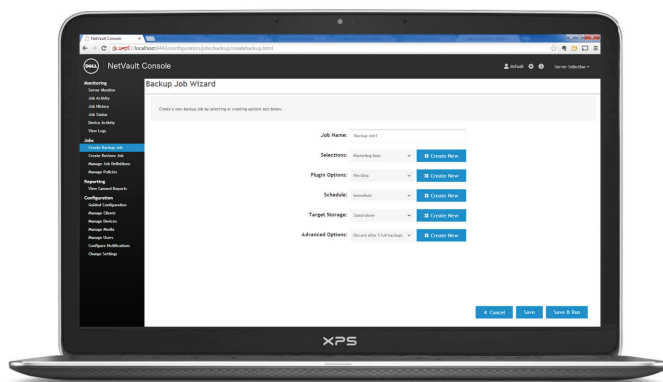
**NAS protection**—Get advanced data protection for information stored on NAS devices, including those made by Dell, EMC, Hitachi, IBM, NetApp and Sun. Reduce traffic over the LAN and maximize performance by backing up over the Network Data Management Protocol (NDMP). NetVault Backup supports many different storage topologies and configurations.

**Enterprise-wide control**—Use NetVault’s web-based user interface to configure, manage, and monitor your backup and recovery operations. Convenient wizards guide you through the common tasks, such as

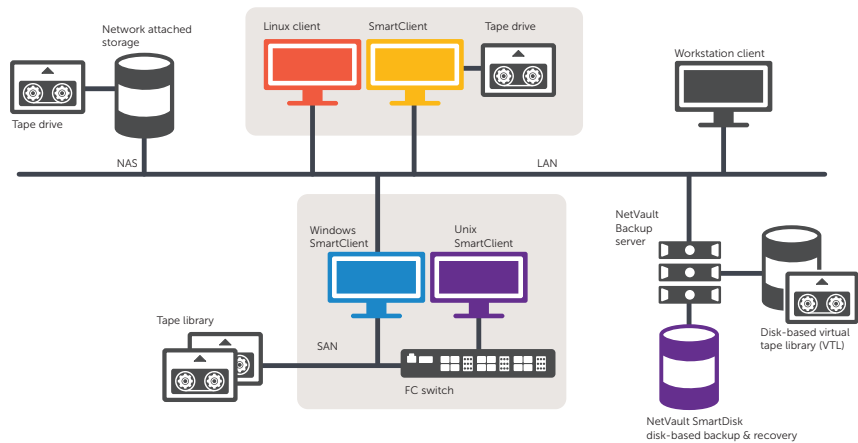
NetVault Backup allows you to safeguard your data and applications in both physical and virtual environments from one intuitive console.

## Benefits:

- Simple, out-of-the-box deployment for fast time to value
- Heterogeneous server support for flexibility when conditions change
- Extensive application support
- Seamless integration with Dell DR Series appliances for source-side deduplication and WAN-optimized replication.
- Comprehensive Network Attached Storage (NAS) protection
- Powerful, flexible encryption when and where you need it
- Bare-metal recovery to drastically reduce the time it takes to restore a failed server
- Extensive storage attachment options to allow for distributed backup targets and workload
- Dynamic device sharing to optimize backup data transfers and reduce points of failure



The NetVault WebUI enables remote administration of a NetVault Backup Server from any browser.



*Dell NetVault offers enterprise level data protection with ease of use and flexibility.*

## System requirements and support

Client platforms: Windows®, most Linux® platforms, Mac OS X, HP-UX Itanium, AIX, Solaris (SPARC & x86/x86-64)

Application support: Oracle, SQL Server®, Exchange Server, SharePoint®, DB2®, Informix®, Domino®, MySQL™, PostgreSQL, Sybase®, Teradata®, SAP

Virtualization platforms: VMware® and Hyper-V®

Protected by U.S. Patents #7,814,260; 7,913,043; 7,979,650; 8,086,782; 8,145,864; 8,171,247; 8,255,654; 8,271,755; 8,311,985; 8,452,731. Protected by Japanese, E.U., French and UK patents 1615131 and 05250687.0, and German patent DE602004002858. Additional patents pending.

creating backup jobs, assigning policies, configuring storage devices, and generating reports.

**Strong security**—Meet regulatory requirements without sacrificing backup windows or deduplication performance with an encryption plug-in for CAST-128, AES-256 or CAST-256 algorithm support. Flexible job-level encryption lets you easily select which data to encrypt.

**Back up to disk and tape**—NetVault Backup supports disk- and tape-based backup to a wide range of storage targets, including disk-based devices, tape libraries, and third-party deduplication appliances. You'll also have the power to move data from one storage target to another for disaster recovery purposes.

**Flexible storage attachment**—Avoid data transfers over the network by attaching a target storage device directly to a source server. With LAN-free backups, you can easily distribute the workload throughout the backup domain.

**Simple, straightforward licensing**—NetVault Backup can be licensed by capacity or by component, giving you incredible flexibility. With component-based licensing, you can pick and choose which modules you need. You can also license NetVault by capacity and deploy an unlimited number of clients or application plug-ins. Dell offers two capacity-based licensing

editions for NetVault Backup: One offers great value for growing businesses; the other offers comprehensive protection for larger enterprises.

**Data deduplication**—NetVault integrates seamlessly with the Dell DR Series of deduplication appliances, enabling you to take full advantage of the appliance's powerful deduplication, compression and replication capabilities. Shrink backup windows and improve restore times, use source-side deduplication to reduce network traffic and efficiently send copies of your backup data offsite for disaster recovery.

**Virtualization support**—Extend advanced data protection to VMware® and Hyper-V® environments. NetVault Backup gives you consistent, reliable, point-and-click backup and restore for virtual environments without requiring you to be an expert.

## Dell Software: Delivering complete and connected solutions

Dell Software empowers organizations of all sizes to experience Dell's "power to do more" by delivering scalable yet simple-to-use solutions that can increase productivity, responsiveness and efficiency. This software, when combined with Dell hardware and services, helps customers simplify IT, mitigate risk and accelerate business results. [www.dellsoftware.com](http://www.dellsoftware.com).

### Dell Software

5 Polaris Way, Aliso Viejo, CA 92656 | [www.dell.com](http://www.dell.com)  
If you are located outside North America, you can find local office information on our Web site.

© 2014 Dell, Inc. ALL RIGHTS RESERVED. Dell, Dell Software, the Dell Software logo and products—are registered trademarks of Dell, Inc. in the U.S.A. and/or other countries. All other trademarks and registered trademarks are property of their respective owners. Datasheet-NVBULaunch-USA-NK-24021

