

Active Administrator for Certificate Management

Easily manage digital certificate lifecycles with a single console

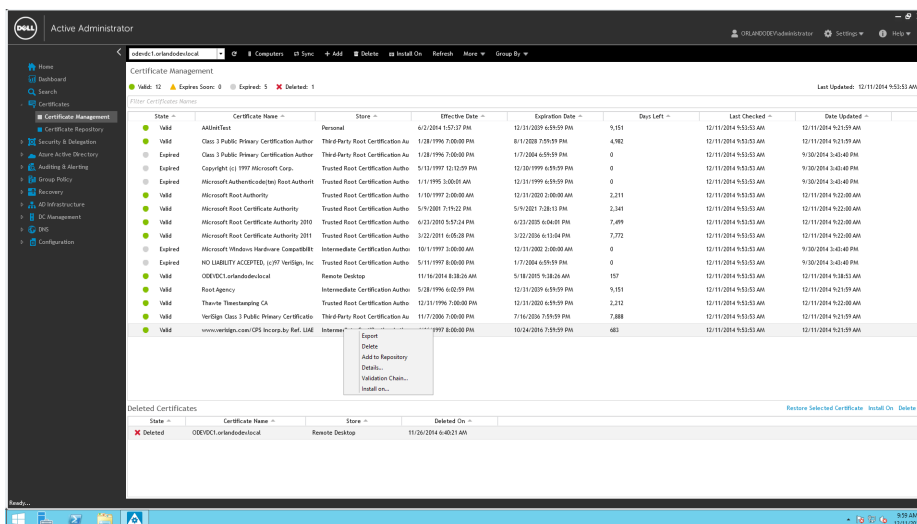
IT administrators, IT security and IT managers have limited options when it comes to managing digital certificates across the enterprise. Without valid certificates in place, malicious parties can intercept data between users and corporate websites—commonly referred to as man-in-the-middle attacks—leading to serious security breaches, as well as lost trust among online customers and damage to a corporation’s image. The same risks apply for certificates used for other encrypted communications, including email, FTP, etc.

Active Administrator for Certificate Management enables IT administrators to manage the complete lifecycle of digital certificates, using a single console to find certificates, alert on expiring certificates, recover deleted certificates and deploy certificates to new servers, ensuring encrypted communications and transactions stay secure.

Active Administrator for DNS Certificate Management complements the Active Administrator family of products to provide a complete Active Directory management solution—from a single pane of glass.

Benefits:

- Provide complete capabilities for managing the entire certificate lifecycle
- Add servers across the enterprise to manage existing certificates
- Alert or report on expired certificates, or those about to expire
- Back up and recover certificates
- Copy or deploy certificates to new servers
- Manage proprietary certificates issued by third-party certificate authorities



Manage the complete lifecycle of digital certificates from a single console.

System requirements

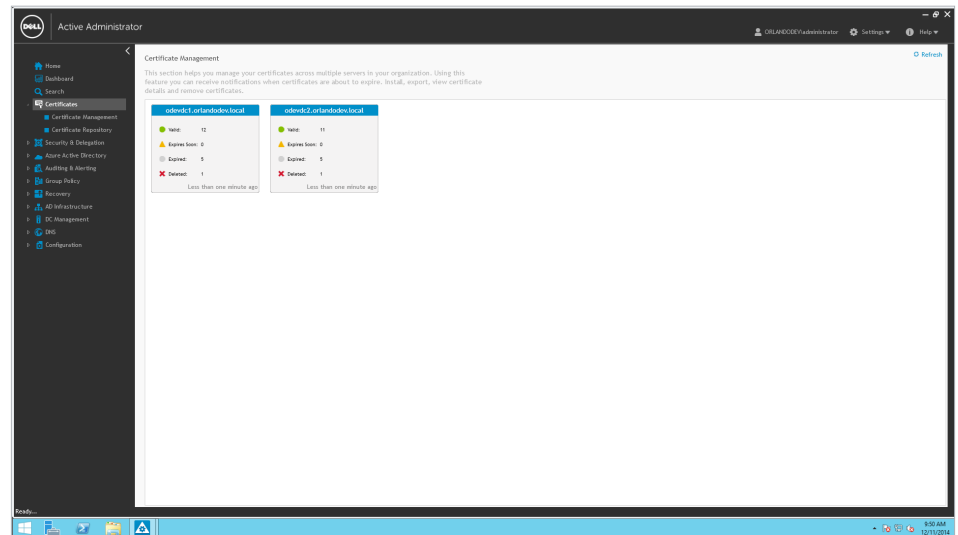
For a complete list of system requirements, visit: software.dell.com/products/active-administrator-for-certificate-management

Features

- **Certificate discovery** — Use a single console to discover and manage certificates across the enterprise, regardless of which certificate authority issued it.
- **Certificate expiration** — Alert and report on expired certificates or those about to expire.
- **Certificate recovery** — Recover certificates deleted outside of the management console by restoring daily backups.
- **Certificate deployment** — Easily copy one or multiple certificates from any server onto additional servers.

About Dell Software

Dell Software helps customers unlock greater potential through the power of technology—delivering scalable, affordable and simple-to-use solutions that simplify IT and mitigate risk. This software, when combined with Dell hardware and services, drives unmatched efficiency and productivity to accelerate business results. www.dellsoftware.com.



Quickly view the status of digital certificates with Active Tiles. Then drill down for details.