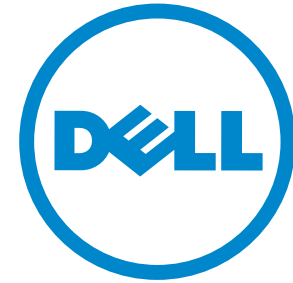




# Dell Wyse V class

Versatility on your desktop.



Wyse



Dell Wyse V class.  
All you need to know, Here:



# The Dell Wyse V class

## Offering versatility and performance.

Powerful energy saving CPUs are at the heart of Dell Wyse V class' expandable but compact size that features a host of connections including DVI for crisp displays and a unique monorail mounting system allowing the device to be mounted under desks, to walls and even to the rear of desktop monitors.



### V10LE

Dell Wyse ThinOS for fast boot up times.



### V30LE

Featuring Microsoft Windows CE.



Start

Models

Features

Technical

Contact


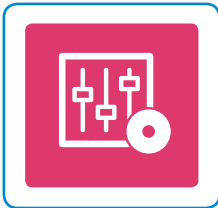


Print

# Features Dell Wyse V class

Dell Wyse V class versatile cloud clients have been created to combine expandability, power and performance in a compact space-saving desktop device. The family is complemented by the Dell Wyse cloud computing software range that features a fast operating system, management and virtualization applications designed to deliver the best PC experience in a cloud computing environment.

The Dell Wyse V class is available with Dell Wyse ThinOS and Microsoft Windows CE.

**Learn more. Simply click the Dell Wyse V class feature icons below:**

Performance 	Connectivity 	Mounting options 	Green 	Management 	User experience optimization 
User experience acceleration 	Dell Wyse ThinOS 	Microsoft Windows CE 			

Take a tour of the Dell Wyse V class range



Start

Models

Features

Technical

Contact

Print

# High performance

## Dell Wyse V10LE and V30LE thin clients.

Reflecting the needs of ever changing desktop environments the Dell Wyse V class range has the expandability, power and performance to match.

Driven by powerful energy saving Via C7 Eden processors the V class presents an all-round high performance and versatile desktop computing platform. Adding an extra monitor is simple with built-in dual video. Expanding functionality is straightforward with an optional PC-Card expansion slot.

Choose between the speed, ease and administrative simplicity of Dell Wyse ThinOS and the robust functionality of Microsoft Windows CE.

Select the WiFi wireless options to deploy the V class across a range of desktop environments without compromising data security.

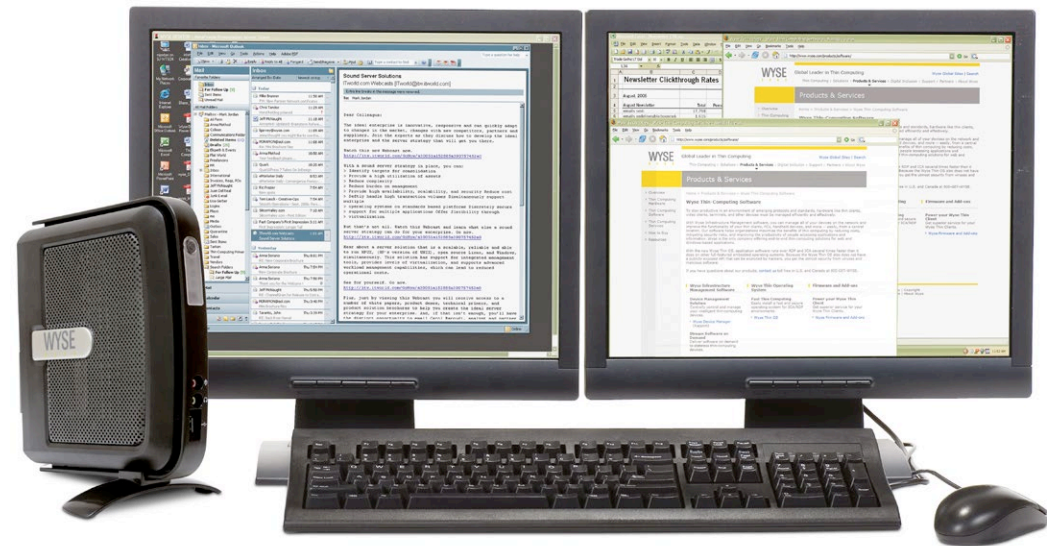


### Via C7 Eden 1.2 GHz

The Via C7 Eden processors inside every Dell Wyse V class deliver excellent performance with low energy use.

## Adding a second monitor is simple.

To add a second monitor, use an optional splitter cable. And, just like all Dell Wyse cloud clients, they don't have hard drives, so all your users' data remains safely on the server, eliminating the risks from data loss or malicious viruses.



[Continue tour](#)



- Start
- Models
- Features**
- Technical
- Contact
- Print

# V class connectivity

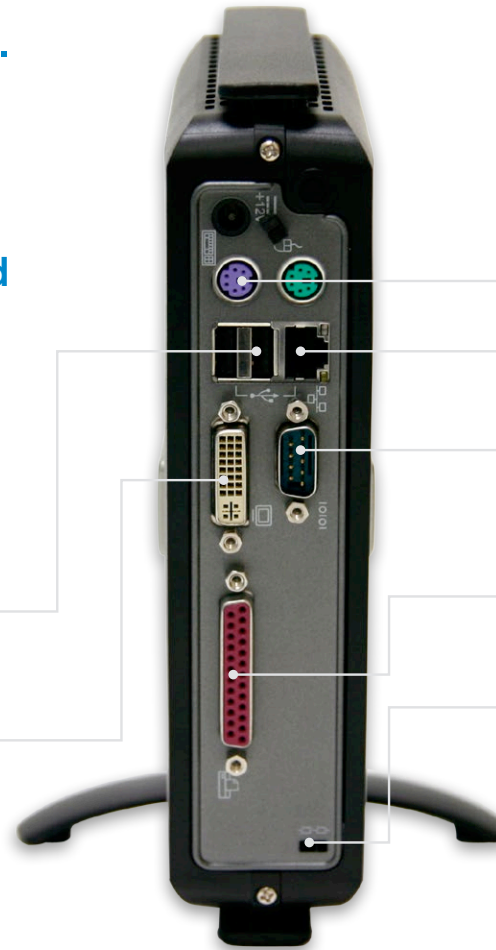
Dell Wyse V10LE and V30LE thin clients.



Front of device

## Well connected

- Audio In: 1/8-inch mini jack, 8 bit stereo microphone
- Audio Out: 1/8-inch mini jack, 16 bit stereo
- Three external USB 2.0 ports (1 front; 2 back)
- One DVI-I Port  
Allows use of 1 or 2 displays (with optional splitter cable)



- Two PS/2 ports
- 10/100 Base-T Ethernet port
- One serial port
- One parallel port
- Kensington lock slot
- Options: Internal smart card reader  
Antenna connection for internal wireless

Continue tour



Start

Models

Features

Technical

Contact

Print

# Mounting options

The Dell Wyse V class can be placed vertically on desktops, mounted to walls and even behind monitors.

## Back of monitor or wall mounting

An optional VESA mount bracket enables V class thin clients to be mounted on the back of a monitor (this requires the four industry standard mounting points to be free). The same bracket can be used for wall mounting, or in a secure or ruggedized cabinet if required.



## Optional feet

Dell Wyse V class thin clients are supplied as standard with feet for vertical use, and optional feet for horizontal use.



[Continue tour](#)



Start

Models

Features

Technical

Contact

Print



# Desktop computing Without compromise



## That's Dell Wyse EarthSmart™ computing

Through our EarthSmart Computing initiative we are committed to helping organizations implement a greener computing strategy – one that delivers a more efficient and productive computing experience for your users with a positive effect on energy wastage, heat and carbon emissions.

### Green power

The Dell Wyse V class packs a considerable punch with their green credentials. From reduced manufacturing impact and end-of-life recycling waste, to as little as 7 watts energy consumption, deploying V class thin clients will enable your organization to achieve a lighter carbon footprint.

\*Average power usage with 1 device connected to 1 keyboard, 1 PS/2 mouse, and 1 monitor.



## More information

Download carbon calculators, fact sheets and white papers from here:

[www.wyse.com/green](http://www.wyse.com/green)

Continue tour



Start

Models

Features

Technical

Contact

Print

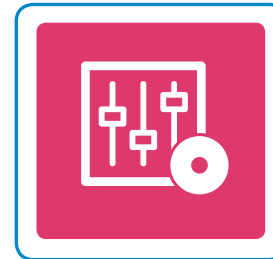
# Thin client management Dell Wyse Device Manager

Dell Wyse Device Manager (WDM) addresses key management requirements for deploying powerful thin clients. With its centralized management and administration WDM helps IT departments deliver effective remote thin client support while minimizing end user downtime.

**Security is assured with HTTPS based imaging, updates and downloads.**

## WDM delivers organization-wide benefits:

<b>Operations</b>	Centralized management. Collect and organize asset information.
<b>Administration</b>	Health status reports. Automated client settings. Update client firmware and add applications.
<b>End User IT Costs</b>	Easy, effective remote support. Create custom scripts and packages.
<b>Minimize downtime</b>	Restart or reset thin clients in less than a minute. Enforce policies. Minimize user errors.



## At a glance features

- **Security**
  - HTTPS based imaging / updates
  - Fully encrypted network traffic
  - Delegated admin access (MS AD) support
- **No-Hassle deployment**
  - Complete device imaging / patching / updates
  - Bandwidth throttling for efficiency / reliability
  - Software updates and add-ons
- **Device administration and monitoring**
  - Device health status / reporting
  - Remote shadowing / control
  - Default device configuration
- **Reduce end user IT costs**
  - Reduce energy consumption with scheduled up/down times
- **Scalability**
  - Distributed architecture
  - Microsoft SQL database support
  - Multiple remote repository support
- **Complete asset visibility**
  - Automated device discovery
  - Detailed hardware asset information
  - Installed software asset information

Continue tour



Start

Models

Features

Technical

Contact

Print



# User experience optimization Dell Wyse TCX Suite

with Dell Wyse Collaborative Processing Architecture

## Dell Wyse TCX delivers an optimal user experience in one software suite.

The TCX suite enriches the user experience by removing the limitations previously associated with thin clients. It enhances, not replaces, key protocols like ICA/HDX and RDP by adding key features to help make each more valuable.



### Multi-display

Ensures application windows and dialog boxes are multi-monitor aware when using more than one monitor.

### USB Virtualization

Enables plug and play peripheral support for virtual desktop environments.

- Redirect and use local USB devices in virtual desktops.
- Deploy virtual desktops to knowledge workers with special device access needs.
- Enable a broad set of USB peripherals including webcams and headsets.

### Multimedia acceleration

Streamlines the delivery of video and audio content to the local client for a rich user experience within a thin client computing architecture.

- Accelerates Mpeg1, Mpeg2, WMV, Mpeg4 Part 2, AC3, AAC, MP3, WAV, WMA media types.
- Collaborative Processing Architecture enhances server scalability, and network utilization by off-loading multimedia rendering to the client.

### Flash redirection

Flash redirection helps thin client users to experience excellent Flash video performance. TCX Flash redirection allows web-based Flash video content to be fetched directly by the Dell Wyse thin client from the source where it is played locally. Users get outstanding Flash video performance while the VDI host system runs more efficiently.

### Bi-directional sound

Enables bi-directional audio in virtual desktop environments, enabling solutions such as VOIP, digital dictation or voice recognition to be deployed.



Start

Models

Features

Technical

Contact

Print

Continue tour



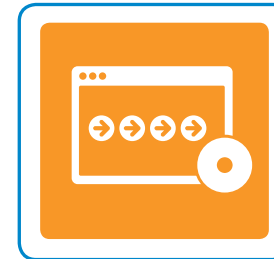
# Virtualization software Dell Wyse Virtual Desktop Accelerator

## Removing the barriers of network latency.

Dell Wyse Virtual Desktop Accelerator (VDA) enables virtualized desktop and thin computing environments to be deployed to areas where network latency has, to date, presented operational barriers. Now, with VDA, more users can receive the full benefits of Dell Wyse thin computing – with outstanding PC experience over virtualized desktops.

VDA is a software-only solution for Dell Wyse thin clients and supported PCs that delivers exceptional user experience for the allocated network bandwidth by neutralizing the effects of network latency and packet loss. Making 'thin' suitable for more remote-site, branch, or field-based users.

VDA works with instead of replacing existing RDP and ICA protocols, and is designed to offer significant acceleration over certain capacity-constrained WAN links.



## At a glance features

- Software-only acceleration of virtual desktops and applications
- Accelerates existing Citrix ICA and Microsoft RDP protocols
- Works on WANs and 'fat, long pipes'
- Accelerates connections to Citrix XenApp, Citrix XenDesktop, VMware View and Microsoft Terminal Server and Microsoft Hyper-V VDI
- Enhances Dell Wyse TCX software suite functionality across wide-area networks
- Enables Dell Wyse Collaborative Processing Architecture across wide-area networks
- Administrator console provides control of maximum bandwidth per connection
- Leverages built-in security of underlying protocols (128-bit encryption for RDP and ICA).

Continue tour



Start

Models

Features

Technical

Contact

Print

# Operating systems Dell Wyse ThinOS 7.1

**Dell Wyse ThinOS is the most secure, management-free solution for cloud and virtual computing environments with built-in support for the latest infrastructures including Citrix, Microsoft, VMware and other vendors.**

## **Fast. Simple. Secure.**

This fast, purpose-built cloud client computing platform boots up in seconds, updates itself automatically, and provides IT managers with simple, scalable administration to suit their organization's needs. Security is assured too as there's no published API – giving you an environment that's immune from viruses and malware.

Management is simple with time consuming tasks such as software and configuration updates automated via central file servers (ftp, http, and https) where Dell Wyse thin clients can check-in for their updates. So, whether you have 100, 1000, or 10,000 devices, rolling out a new update is as easy as dropping a file onto your file server.

## **New Zero Launchpad optimizes virtual desktop deployments**

By harnessing the power of the Dell Wyse Zero engine, ThinOS delivers fast and secure virtual desktops with user experiences based upon an individual's access levels.

Logging on is fast and easy too with no double desktop dramas. There's just one screen for inputting credentials before users are immediately presented with their assigned desktop(s). Finally, the Dell Wyse Zero toolbar gives advanced users the option to switch between multiple virtual desktops or modify local settings (e.g. display resolution) – all without leaving their virtual desktop environment.

## **Innovative, user-oriented and productive features**

### **Instant-on, simple access for users**

- The Zero launchpad and Zero toolbar adapt to provide simple and advanced access depending on user privileges.
- With class-leading boot-up times, users are ready to login in seconds.

### **Automated Management**

- ThinOS enables simple, scalable device management from day one without the need for complex management software.
- For enterprise management ThinOS features complete integration with Dell Wyse Device Manager.

### **Security**

- Featuring an unpublished API and no local file system, ThinOS is inherently secure providing maximum security against malware and viruses.
- Secure remote access using Citrix Access Gateway (CSGEE mode) or VMware Security Server, including dual factor authentication with RSA SecureID.

### **Industry best Citrix HDX, View, and RDP in a non-windows client**

- Support for latest HDX features including ICA UDP audio, accelerated multimedia playback, USB webcam remoting, new audio codecs for VoIP, dual factor authentication, etc.
- Dell Wyse is the only vendor with an RDP 7.1 compatible client on non-windows OS – other vendors use RDESKTOP (based on RDP 6.x)
- ICA and RDP performance outperforms other non-windows clients by 3x (on comparable hardware).
- Enhance existing protocols further with Dell Wyse TCX (i.e. multicasting, high latency optimization, USB redirection into terminal server, etc)



Start

Models

Features

Technical

Contact

Print

Continue tour



# Operating systems Microsoft Windows CE

**Microsoft Windows CE gives you a PC-like experience on the desktop, with local terminal emulation so you can run most legacy applications.**

By combining this small and fast operating system with firmware components, Dell Wyse is able to reduce boot times and increase protection against viruses, trojan horses, and other malware.

The result is a simply more secure solution that provides the flexibility to add standard peripherals, from printers to scanners to USB thumb drives. However these peripherals can only be connected under access controlled by the IT administrator.



## Small, fast and secure

Dell Wyse-enhanced Microsoft Windows CE is ideal for departments and organizations that want a Microsoft end-to-end solution, and support for Citrix ICA, Microsoft RDP, VMware View, Ericom PowerTerm WebConnect, Ericom PowerTerm InterConnect Terminal Emulation as well as a local browser, plus standard connections to peripherals and add-ons.



Start

Models

Features

Technical

Contact

Print

Continue tour



# Technical Dell Wyse V class specifications

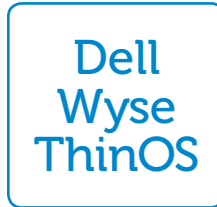
Dell Wyse V class thin clients are available across a variety of operating systems featuring the speed, ease and administrative simplicity of Dell Wyse ThinOS and the functionality of Microsoft Windows CE.

**Want to learn more? Simply click the relevant icon.**

Dell Wyse V class



Dell Wyse ThinOS



Microsoft Windows  
CE 6.0 WFR3



Start

Models

Features

Technical

Contact

Print

# Hardware specifications

## Dell Wyse V10LE and V30LE thin clients.

Processors	Via C7 Eden 1.2GHz
Memory	128MB Flash / 512MB DDR2 RAM (Dell Wyse ThinOS) 128MB Flash / 512MB DDR2 RAM (Windows CE)
I/O peripheral support	One DVI-I port One DVI-I port to VGA (DB-15) adapter Dual-video support with: Optional DVI-I to DVI-D plus VGA-monitor splitter cable (sold separately) Enhanced PS/2 keyboard with Windows keys PS/2 optical mouse included One serial port One parallel port Three USB 2.0 ports (1 on front, 2 on back)
Networking	10/100 Base-T Fast Ethernet twisted pair (RJ-45) Optional external USB 802.11 b/g wireless adapter
Factory options	Internal Smart Card reader Internal wireless option eliminates theft of external wireless adapters CardBus / PCMCIA card slot
Display	VESA monitor support with Display Data Control (DDC) for automatic setting of resolution and refresh rate Single monitor at 32bpp color: up to 1920 x 1200 (Dell Wyse ThinOS), 1920 x 1440 (Windows CE) dual monitors used simultaneously (requires optional monitor splitter cable) at 32bpp color: up to 1280 x 1024 (Dell Wyse ThinOS), 1680 x 1050 (Windows CE)

Audio	Output: 1/8-inch mini jack full 16 bit stereo, 48 KHz sample rate Input: 1/8-inch mini jack, 8 bit microphone
Physical characteristics	Height: 7.9 inches (201mm) Width: 1.8 inches (46mm) Depth: 7.1 inches (180mm)
Shipping weight	8 lbs. (3.6kg)
Mountings	Vertical foot (optional horizontal feet) Optional VESA mounting bracket
Power	Worldwide auto-sensing 100-240 VAC, 50/60 Hz. Average power usage with device connected to 1 keyboard with 1 PS/2 mouse and 1 monitor: 13.2 Watts/hour
Temperature range	Horizontal position: 50° to 95° F (10° to 35° C) Vertical position: 50° to 104° F (10° to 40° C)
Humidity	20% to 80% non-condensing
Security	Kensington lock slot
Safety certifications	German EKI-ITB 2000, ISO 9241-3/-8 cULus 60950, TÜV-GS, EN 60950 FCC class B, CE, VCCI, C-Tick WEEE, RoHS compliant
Warranty	Three-year hardware warranty



Start

Models

Features

Technical

Contact

Print



# Software specifications Dell Wyse ThinOS 7.1

<b>Citrix HDX ready client ICA 12 compatible</b>	<ul style="list-style-type: none"> <li>- UDP Audio</li> <li>- Improved media flow control</li> <li>- HDX plug-n-play</li> <li>- Flash (server rendered)</li> <li>- Progressive Display</li> <li>- HDX IntelliCache</li> <li>- Session reliability</li> <li>- Access Gateway Support (direct LDAP or RSA authentication)</li> <li>- Support for L-shaped desktop (and other rotated monitor set up)</li> <li>- Granular control on HDX USB redirected devices</li> </ul>	<ul style="list-style-type: none"> <li>- User roaming</li> <li>- HDX Mediastream</li> <li>- HDX Realtime</li> <li>- HDX Broadcast (Branch Repeater)</li> <li>- Seamless Windows</li> <li>- Desktop Restart (XenDesktop)</li> <li>- Smartcard authentication &amp; redirection</li> </ul>	<b>Dell Wyse TCX Suite</b> Dell Wyse TCX Suite virtualization software works with and enhances HDX and RDP protocols featuring: <ul style="list-style-type: none"> <li>- Multimedia: giving users the power to run rich multimedia files formats</li> <li>- Multi-Display: windows and dialog boxes behave the way users expect across multiple displays.</li> <li>- USB Virtualizer: client attached USB devices are visible to virtual desktops applications, and administrators, even on terminal servers!</li> <li>- Rich Sound: receive and transmit high quality audio without compromise.</li> <li>- Flash Acceleration: helps users to experience improved Flash performance.</li> </ul>
<b>RDP 7.1 compatible client</b>	<ul style="list-style-type: none"> <li>- Optimized for Windows 7</li> <li>- Rich Multimedia (TS MMR)</li> <li>- Up to 32-bit color depth connections</li> <li>- RDP7 Bi-directional audio</li> <li>- Flash Video support (with TCX)</li> <li>- Broad USB Support (with Dell Wyse TCX)</li> <li>- Smartcard authentication and redirection</li> <li>- WAN Acceleration (with Dell Wyse VDA)</li> </ul>	<ul style="list-style-type: none"> <li>- Support for Microsoft RDS broker (including RemoteApp)</li> <li>- RDP7 Multimedia</li> <li>- True Multi-Monitor Support (incl. rotation)</li> <li>- Network Level Authentication (NLA)</li> </ul>	<b>Dell Wyse Virtual Desktop Accelerator</b> Neutralizes the effects of network latency and packet loss, making 'thin' more suitable for more remote-site, branch, or field-based users by boosting RDP and ICA performance up to 20 times on networks with latencies up to and exceeding 300ms and at least 768kbps bandwidth.
<b>VMware View 4.5 client</b>	<ul style="list-style-type: none"> <li>- Smartcard Authentication</li> <li>- SecureID Authentication</li> <li>- Multimedia Support (with TCX)</li> <li>- Bi-directional Audio (with TCX)</li> <li>- WAN Acceleration (with VDA)</li> </ul>	<ul style="list-style-type: none"> <li>- SSL Tunneling</li> <li>- Restart VM</li> <li>- Broad USB Support (with TCX)</li> <li>- Flash Video Support (with TCX)</li> </ul>	<b>Management made easy</b> Fast booting, scalable administration includes simple drag and drop placement of firmware, automatic updates via file server and full integration with Dell Wyse Device Manager.
<b>Roaming smart card vendor support</b>	Enables smart card users to not only roam from station to station but also access the same virtual environment regardless of which station they are connecting from. ThinOS provides 'out-of-the-box' smart card support for vendors such as Gemalto .NET, Aladdin, and ActiveIdentity – supported within Citrix, VMware and Microsoft environments. Users benefit from secure login and roaming desktop support so they can access their environments from any suitably equipped Dell Wyse thin computing environment. DoD CAC supported.		
			<b>Security built in</b> <ul style="list-style-type: none"> <li>- With no published API ThinOS is inherently secure from viruses and malware.</li> <li>- ThinOS includes robust wired and wireless 802.1x support, with secure encryption for simple installation and management.</li> <li>- DoD CAC supported.</li> <li>- Although there is no local file system, certifications and configuration data can be stored locally. Leveraging AES 128 bit encryption, with a random number generator, any local data will be secure.</li> </ul>
			<b>Server OS Infrastructure support</b> <ul style="list-style-type: none"> <li>- Citrix XenDesktop 4.0 – 5.5</li> <li>- Citrix XenApp 4.5 – 6.5</li> <li>- Citrix Presentation Server</li> <li>- Microsoft Windows Terminal Server 2003 &amp; 2008/R2</li> <li>- VMware View 4.0 – 5.0</li> <li>- Support for other leading VDI brokers (Quest Software, Leostream, etc)</li> </ul>



# Software specifications Microsoft Windows CE 6.0 WFR3

Firmware features	1 GHz Via C7 Processor
Memory	128MB Flash / 512MB RAM
Firmware features	<p>Microsoft Windows CE 6.0 WFR3</p> <p>Microsoft Internet Explorer 6.0 resident: HTML, JavaScript, XML, Active X as custom</p> <p>Citrix ICA 10.x resident</p> <p>Citrix Web Interface</p> <p>RDP 6.0 resident</p> <p>VMware View Client Resident</p> <p>CCID compliant Smart Card Readers support</p> <p>Ericom PowerTerm InterConnect Terminal Emulation</p> <p>Ericom PowerTerm WebConnect client</p> <p>Jetcet 5.0</p> <p>Media Player 9.0</p> <p>Terminal Services Advanced Client (TSAC)</p> <p>ThinPrint ICAVC and Thinprint RDP</p> <p>VNC support in CE 6.0</p> <p>WinCE 6 eStar B category certification</p>
Server OS Infrastructure support	<p>Citrix XenApp / Citrix Presentation Server</p> <p>Citrix XenDesktop</p> <p>VMware View</p> <p>Ericom PowerTerm WebConnect</p> <p>Microsoft Windows Terminal Server 2003 / 2008</p>
Set-up and configuration	<p>User interface</p> <p>Boot from local flash</p>

Protocol support	TCP/IP, DNS, DHCP, PXE, PPP, PC/SC and ISO-7816 smart-card support
Management	<p>Remote management, configuration and upgrades through Dell Wyse Device Manager</p> <p>Send messages</p> <p>Complete image upgrade</p> <p>Wake terminal remotely (Wake-on LAN)</p> <p>Terminal configuration (IP information, etc)</p> <p>Remote screen shadowing of entire desktop (Dell Wyse Remote Shadow)</p> <p>Reporting</p> <p>Altiris deployment via add-on</p>
Wireless support	<p>802.11 b/g/n support with internal wireless adapter</p> <p>IEEE 802.1X</p> <p>WEP, WPA, and WPA-2 wireless authentication</p> <p>Internal WiFi default encryptions: MD5, PAP, TLS</p> <p>Supports USB wireless adapters from: Cisco, D-Link, Netgear, US Robotics, Trendware</p>





# Contact Dell Wyse.

## Dell Wyse

3471 North First Street,  
San Jose,  
CA 95134-1801

## Visit our website at:

<http://www.dellwyse.com> or  
send email to: [sales@wyse.com](mailto:sales@wyse.com)

## Dell Wyse Sales

1-800-438-9973

## International customers please dial:

00 1 408 473 1200

## Dell Wyse Support Portal

Dell Wyse Support Portal provides a fast and accurate way to communicate interactively with Dell Wyse Customer Support, and helps us respond to your requests more quickly.

<http://support.wyse.com/selfservice.html>



Wyse

Dell Wyse offers cloud client computing sales, service and support expertise around the globe. Click for contact details.

## About Dell

Dell Inc. (NASDAQ: DELL) listens to customers and delivers innovative technology and services that give them the power to do more. For more information, visit [www.dell.com](http://www.dell.com)

©2013 The Dell Wyse logo and references are trademarks of Dell Wyse. Other product names mentioned herein are for identification purposes only and may be trademarks and/or registered trademarks of their respective companies. All specifications are subject to change without notice. Whilst we make every effort to ensure the accuracy of the details, specifications, models, images and benefits featured in this datasheet, we cannot be held responsible for any errors and/or omissions. If you have any queries regarding Dell Wyse products please contact your authorized regional Dell Wyse Partner. Some features require support by server operating system and protocol.

Approved final 140113.

Start

Models

Features

Technical

Contact

Print

# Dell Wyse V class

## Versatility and performance

Reflecting the needs of ever changing desktop environments the Dell Wyse V class range has the expandability, power and performance to match.

Driven by powerful energy saving Via C7 Eden processors the Dell Wyse V class range of cloud clients present an all-round high performance and versatile desktop computing platform. Adding an extra monitor is simple with built-in dual video support. Expanding functionality is straightforward with an optional PC-card expansion slot.

Choose between the speed, ease and administrative simplicity of Dell Wyse ThinOS and the robust functionality of Microsoft Windows CE.



## Secure desktop computing

Choose the WiFi wireless options to deploy the Dell Wyse V class across range of desktop environments without compromising data security. And, just like all Dell Wyse cloud clients, they don't have hard drives, so all your users' data remains safely on the server, eliminating the risks from data loss or malicious viruses. A unique monorail mounting system allows mounting discretely under desks, to walls and even to the rear of desktop monitors.

## Virtualization software

The Dell Wyse V class is well suited to take advantage of Dell Wyse TCX Suite of virtualization software.

## Choice of operating systems

The Dell Wyse V class is available with Dell Wyse ThinOS and Microsoft Windows CE.

## At a glance

**Performance** Via C7 Eden 1.2GHz processors feature inside every Dell Wyse V class delivering excellent performance with low energy use.

**Connectivity** The Dell Wyse V class supports fixed and wireless networking, serial, video, sound and smart card connectivity.

**Mounting options** Supplied with a vertical foot as standard and optional horizontal standing feet. Can also be mounted to walls, under desks and to the rear of monitors.

**Green** Draws just between 13 to 15 watts of power when connected to one keyboard, PS/2 mouse and monitor.

**Management** Features Dell Wyse Device Manager (workgroup edition).

**Virtualization** Delivers the best user experience through full support for the Dell Wyse TCX Suite of virtualized desktop enhancement software and Dell Wyse VDA – acceleration software that reduces the effects of network latency.

**Dell Wyse ThinOS** Fast booting, easy management, secure and with Smart Card support.

**Microsoft Windows CE 6.0 WFR3** Ideal for departments and organizations that need simple support for Citrix ICA and Microsoft RDP.

# Specification

## Dell Wyse V10LE and V30LE thin clients

Processors	Via C7 Eden 1.2GHz
Memory	128MB Flash / 512MB DDR2 RAM (Dell Wyse ThinOS) 128MB Flash / 512MB DDR2 RAM (Windows CE)
I/O peripheral support	One DVI-I port One DVI-I port to VGA (DB-15) adapter Dual-video Support with: Optional DVI-I to DVI-D plus VGA-monitor splitter cable (sold separately) Enhanced PS/2 keyboard with Windows keys PS/2 optical mouse included One serial port, and one parallel port Three USB 2.0 ports (1 on front, 2 on back)
Networking	10/100 Base-T fast Ethernet twisted pair (RJ-45) Optional external USB 802.11 b/g wireless adapter
Factory options	Internal Smart Card reader Internal wireless option eliminates theft of external wireless adapters CardBus / PCMCIA card slot
Display	VESA monitor support with Display Data Control (DDC) for automatic setting of resolution and refresh rate Single monitor at 32bpp color: up to 1920 x 1200 (Dell Wyse ThinOS), 1920 x 1440 (Windows CE) dual monitors used simultaneously (requires optional monitor splitter cable) at 32bpp color: up to 1280 x 1024 (Dell Wyse ThinOS), 1680 x 1050 (Windows CE)
Audio	Output: 1/8-inch mini jack full 16 bit stereo, 48KHz sample rate Input: 1/8-inch mini jack, 8 bit microphone
Physical characteristics	Height: 7.9 inches (201mm) Width: 1.8 inches (46mm) Depth: 7.1 inches (180mm)
Shipping weight	8 lbs. (3.6kg)
Mountings	Vertical foot (optional horizontal feet) Optional VESA mounting bracket
Power	Worldwide auto-sensing 100-240 VAC, 50/60 Hz Average power usage with device connected to 1 keyboard with 1 PS/2 mouse and 1 monitor: 13.2 Watts
Temperature range	Horizontal position: 50° to 95° F (10° to 35° C) Vertical position: 50° to 104° F (10° to 40° C) Humidity 20% to 80% non-condensing
Security	Kensington lock slot
Safety certifications	German EKI-ITB 2000, ISO 9241-3/-8 cULus 60950, TÜV-GS, EN 60950 FCC Class B, CE, VCCI, C-Tick WEEE, RoHS compliant
Warranty	Three-year limited warranty



Learn more: Contact Dell Wyse at [sales@wyse.com](mailto:sales@wyse.com) or call 1-800-438-9973

