



## Performance, security, superb solutions — in a tabloid color multifunction printer

Get maximum productivity with this versatile tabloid color multifunction printer that combines advanced document solutions with comprehensive security features. With built-in Optical Character Recognition (OCR) and workflow solutions, this workhorse printer helps boost office efficiency and productivity.

Get a low total cost of ownership, reliable performance and flexible scalability to meet demanding printing needs. With the C7765dn, you'll gain peace of mind with Dell's superb service support that includes on-site hardware installation and Limited Hardware Warranty<sup>1</sup> service with 4 hour 9 x 5 On-site response<sup>2</sup>.

Make demanding business printing needs easy with the C7765dn multifunction printer.



Dell™ Color Multifunction Printer - C7765dn



For more information on our products, visit [dell.com/printers](http://dell.com/printers)

1. For a copy of Limited Hardware Warranty, write Dell USA LP, Attn: Warranties, One Dell Way, Round Rock, TX 78682 or visit [www.dell.com/warranty](http://www.dell.com/warranty). For warranty information for other countries, see website: [www.dell.com/servicecontracts](http://www.dell.com/servicecontracts) and then select the country.

2. Available in US only: 4 hour 9 x 5 On-Site Service after Remote Diagnosis: Determination by online/phone technician of cause of issue; may involve customer access to inside of system and multiple or extended sessions. If issue is covered by Ltd Hardware Warranty ([www.dell.com/warranty](http://www.dell.com/warranty)) and not resolved remotely, technician will be dispatched, usually within a 4 hour average, following completion of Remote Diagnosis. 4 hour on-site response is available within defined, non-remote locations and support window of 5 days/week and 9 hours/day with a cut off local time of 1:00pm, for calls after 1:00pm service technician will be dispatched on the next business day. Availability varies. Other conditions apply.

# Dell Color Multifunction Printer | C7765dn



## Superb performance

**Maximize productivity with high performance features on a versatile device.**

- Print, scan and copy up to tabloid (A3) size from one versatile, color multifunction device. Analog fax option available with purchase of the Fax Kit<sup>1</sup>.
- Print and copy at fast speeds of up to 35 pages per minute (ppm) in black/color (letter/A4)<sup>2</sup>.
- Scan documents at outstanding speeds of up to 70 impressions per minute (ipm, simplex) with the inbuilt 110-sheet Duplex Automatic Document Feeder (DADF).
- Easily meet high volume printing demands with a high duty cycle<sup>3</sup> of up to 153,000 pages per month.

## Improved workgroup manageability

**Manage tasks efficiently with built-in advanced document and workflow solutions.**

- Scan and convert documents into editable, searchable PDFs directly from the printer with built-in Optical Character Recognition (OCR), making it easy to search for, retrieve and edit the information.
- High compression scanning allows users to send and receive high resolution files that contain text and graphics without consuming excessive storage space, helping to free up network bandwidth.
- Streamline workflows with one-touch Job Flow Sheets. Use the Job Flow Editor to group complicated and repetitive tasks into a simple job flow — ready to activate with a touch of a button.
- Easily scan and route documents to multiple destinations – printer, emails, network folders, or any USB memory device.
- Designed to scale with businesses, the C7765dn comes with a highly customizable open solution platform, capable of supporting third party and customized imaging solutions<sup>4</sup>.

## Enterprise-level security for strong protection

**Protect the device, data and sensitive information from unauthorized use with comprehensive security features.**

- Prevent unauthorized printer usage through network user walk-up authentication with LDAP and Kerberos.
- Safeguard confidential scan and fax data with Digital Signature and 256-bit Advanced Encryption Standard (AES) encryption while sharing across a network or across devices.
- Protect print, fax or email jobs with the printer's hard drive encryption feature. Multi-pass secure erase further enhances hard-drive security, reducing the risk of confidential data being compromised when the printer's hard disk is accessed illegally.

## Easy to use and customize

**Simplify tasks and save time with intuitive and customizable features. Extensive input and finishing options allow various printer configurations to meet varying business printing needs.**

- Easily navigate printer menus with the large, intuitive 8.5-inch color touch screen. Personalize control panel functions per user with the Shortcut Menu<sup>5</sup>.
- Quickly access and print frequently used forms stored on the printer using the My Forms feature<sup>5</sup>.
- Get hassle-free, fast power up with the printer's wake-up motion sensor. Comprising of pyroelectric and reflection motion sensors, the printer is automatically powered up from sleep mode and ready to use when someone is in close proximity.
- Expand the capabilities of the printer with input options, to meet high volume printing needs for a variety of print media. Additional finishing options allow easy creation of in-house marketing collateral from the comfort of your office.
- Print documents, web content, photos and more, directly from a variety of mobile devices, such as smartphones and tablets, with:
  - Dell Mobile Print app (for Android™ mobile devices)<sup>6</sup>
  - Mobile Print App for Dell (for iOS mobile devices)<sup>6</sup>

1. Fax Kit for analogue fax sold separately.

2. Measured in accordance with ISO IEC 27434 methodology. Actual print speeds will vary with use.

3. Duty cycle is defined as the maximum number of imaged outputs a device could deliver in a month. This metric provides a comparison of robustness in relation to other Dell printers and multifunction printers.

4. Requires Software Development Kit (SDK), available from Quarter 1, 2014.

5. From November 2013, these solutions will also be available for download as a firmware update from Dell.com/support.

6. Mobile printing support is available from November 2013. Requires the local office administrator to provide access to download the relevant app for corporate use. Configuration of the printer and the mobile device must be on the same authorized wireless network.



## Get outstanding value

**Gain long term savings with a low cost per page, long lasting maintenance parts and energy saving features.**

- Save on printing cost with the optional high yield toner cartridges. Get a lower cost per page (CPP) and total cost of ownership than competing HP LaserJet CM6040f<sup>1</sup>. Print up to 26,000 pages<sup>2</sup> (black) and 15,000 pages<sup>2</sup> (color) at a low cost per page<sup>3</sup> (CPP) of US 0.8 cents (mono) / 7.3 cents (color).
- Reduce downtime and save on maintenance costs with longer life<sup>4</sup> maintenance parts, inclusive of 360,000 pages fuser, 164,000 pages mono imaging drum and 143,000 pages color imaging drum.
- Reduce power consumption with Smart Energy Management which powers only the modules required for a specific task.
- Save energy costs with a low Typical Energy Consumption (TEC)<sup>5</sup> of 1.7kWh/week at 115VAC.
- The low melt emulsion aggregate EA-Eco toner used in the C7765dn melts at a temperature lower than conventional toner to provide energy savings as well as brilliant glossy prints on plain paper.



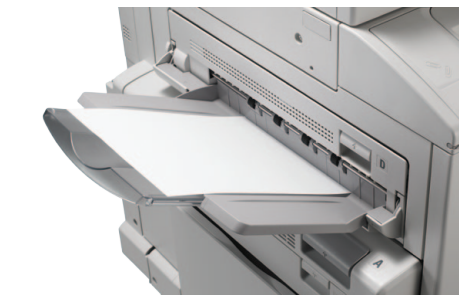
Convert scanned document into searchable digital files with in-device **Optical Character Recognition (OCR)**.



**Scan two-sided documents** easily with the Duplex Automatic Document Feeder.



Save time and power with **automatic wake-up sensor** that will detect nearby presence and power up the device instantly.



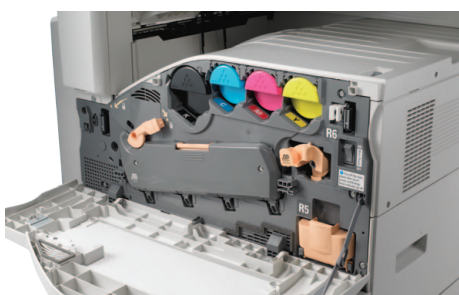
Supports **high volume printing** with a high monthly duty cycle<sup>9</sup> of up to 153,000 pages.



**Increase efficiency** with fast print and copy speeds of up to 35 ppm<sup>10</sup>.



**Fast data transmission** with Gigabit Ethernet 10/100/1000.



Enjoy **long-term cost savings** with high-yield toner capacity of 26,000<sup>2</sup> pages (black) and 15,000<sup>2</sup> pages (color).



**Ease of operation** with the intuitive 8.5-inch touch screen control panel.



Print and easily create marketing collateral with additional **finishing options**.

- Reduce paper consumption by up to 50% with automatic two-sided printing (default print setting). This printer supports printing on recycled, renewable content, and chlorine-free paper.
- You can control your color printing cost by setting user or group level print policies with Dell ColorTrack™.
- Designed with the environment in mind, Dell C7765dn is EPEAT® Silver registered in the US<sup>6</sup>.



## Excellent service and support

**Gain peace of mind with Dell's superb service and support, helping to minimize downtime and keeping productivity at its best.**

- Get your multifunction printer up and running with included on-site hardware installation service, when you purchase the C7765dn.
- The C7765dn comes with standard one year Limited Hardware Warranty<sup>7</sup> and one year 4 hour 9 x 5 On-site response<sup>8</sup>.
- Enjoy fuser maintenance kit replacement for the life of your Limited Hardware Warranty<sup>7</sup> to help you save on high replacement costs.

1. Compared against HP LaserJet CM6040f as of 1st July 2013. Cost Per Page (CPP) model includes toner, Imaging drum and Waste Toner box. Assumes exclusive use of high yield consumables after ship-with consumables run out. CPP calculation is based on list prices of Dell high yield toner (26,000 page yield for mono; 15,000 page yield for color). Total cost of ownership calculated over 4 years of printing.  
2. Toner yield based on testing in accordance with ISO/IEC 19798. Yields vary with usage and environmental conditions.  
3. Cost Per Page (CPP) model assumes exclusive use of high yield consumables after ship-with consumables run out. CPP calculation is based on list prices of Dell extra high yield toner (26,000 page yield for mono; 15,000 page yield for color).  
4. Compared against comparable tabloid (A3) color laser multifunction printers (<\$10,000) as of 1st July 2013.  
5. For the Typical Energy Consumption value calculation details please visit: [www.energystar.gov/ia/products/fap/IE\\_TEC\\_Test\\_Procedure.pdf](http://www.energystar.gov/ia/products/fap/IE_TEC_Test_Procedure.pdf)  
6. EPEAT registration varies by country. See [www.epeat.net](http://www.epeat.net) for registration status by country.  
7. For a copy of Limited Hardware Warranty, write Dell USA LP, Attn: Warranties, One Dell Way, Round Rock, TX 78682 or visit [dell.com/warranty](http://dell.com/warranty). For warranty information for other countries, see website: [dell.com/servicecontracts](http://dell.com/servicecontracts) and then select the country.  
8. Available in US only: 4 hour 9 x 5 On-Site Service after Remote Diagnosis: Determination by online/phone technician of cause of issue; may involve customer access to inside of system and multiple or extended sessions. If issue is covered by Ltd Hardware Warranty ([www.dell.com/warranty](http://www.dell.com/warranty)) and not resolved remotely, technician will be dispatched, usually within a 4 hour average, following completion of Remote Diagnosis. 4 hour on-site response is available within defined, non-remote locations and support window of 5 days/week and 9 hours/day with a cut off local time of 1:00pm, for calls after 1:00pm service technician will be dispatched on the next business day. Availability varies. Other conditions apply.  
9. Duty cycle is defined as the maximum number of imaged outputs a device could deliver in a month. This metric provides a comparison of robustness in relation to other Dell printers and multifunction printers.  
10. Measured in accordance with ISO IEC 27434 methodology. Actual print speeds will vary with use.

Get tasks done efficiently and effortlessly with powerful embedded document and workflow solutions.



#### Shortcut Menu<sup>1</sup>

Create customized shortcuts, specific to users with personalized logins on the touch screen control panel.

#### Optical Character Recognition (OCR)

In-device OCR enables the conversion of hardcopies to searchable and editable PDF files, making the content easy to search for, retrieve and edit.

#### Job Flow Editor Utility

Simplify workflows by creating customized one-touch workflow solutions. With this utility, users are able to group complex and repeated tasks into a single preset workflow — ready for activation with a touch of a button.

#### My Forms<sup>1</sup>

Create and store frequently used forms on the printer. These forms can be quickly accessed and printed via the My Forms icon on the touch screen control panel.

#### Access to Google Drive<sup>1</sup>

Scan to and print from Google Drive™, directly from your printer<sup>2</sup>.

#### Eco Copy<sup>1</sup>

The Eco Copy function reduces paper consumption and toner used during copying by enabling users to easily select copy options such as multi-page (N-up) and duplex (two-sided).

#### USB Direct Print/Scan

Front USB port provides easy access to content from USB flash drives on the printer control panel, for convenient previewing before printing or storing scanned files.

## Be in full control of the printer fleet with Dell OpenManage™ Printer Manager (OPMP)

Quickly and easily monitor, manage and report the status of network printers from the Dell™ OPMP centralized dashboard.

Use Dell OPMP to:

- Remotely locate printers that have errors and identify problems, enabling IT managers to take the appropriate actions to remedy the situation.
- Obtain alerts via email notifications, when a printer needs attention.
- Remotely monitor toner and paper-in-tray status (applicable to most printer models).
- Group multiple printers with similar setups together for easy upgrades of all the printers in the group.

## Simplify workload with Dell Open Printer Driver (OPD)

- Eliminate the clutter on PCs by replacing multiple print drivers with one versatile solution, the Dell Open Printer Driver (OPD). It can help to reduce the huge workload of driver deployment and setting changes.



1. From November 2013, these solutions will also be available for download as a firmware update from [Dell.com/support](http://Dell.com/support).

2. Requires Google Drive™ account.



# Dell Color Multifunction Printer | C7765dn



1. Duplex Automatic Document Feeder (DADF)
2. 297 mm x 432 mm flatbed scanner
3. 400-sheet output
4. 8.5-inch color touch screen (resistive)
5. 560-sheet input tray x 4
6. Built-in Reflection sensor for automatic wake-up/sleep function
7. 100-sheet multipurpose tray
8. Built-in Pyroelectric sensor for automatic wake-up/sleep function

## Consumables

### Ship-with toner cartridge capacity<sup>1</sup>

15,000 pages (black)  
15,000 pages (color - CMY)

### Standard capacity toner cartridge<sup>1</sup>

15,000 pages (black)  
15,000 pages (color - CMY)

### High capacity toner cartridge<sup>1</sup>

26,000 pages (black)

### Imaging Drum:

164,000 page yield (black)  
143,000 page yield (color - CMY)

### Toner Waste Container:

45,000 page yield

### Fuser:

360,000 page yield

## Warranty and service options

### Standard service

1 Year Limited Hardware Warranty<sup>2</sup> and  
1 Year 4 hour 9 x 5 On-site response<sup>3</sup>.

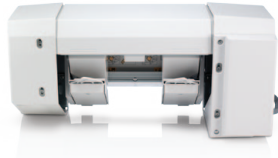
### Service upgrade options

1 - 5 Years 4 hour On-site Support<sup>3</sup>

## C7765dn accessories (sold separately)



Base Finisher



Booklet Maker Unit for  
Base Finisher



2,300-sheet  
High Capacity Feeder



Wing Table

<b>Base Finisher</b>	Sort, stack and staple your printed documents with the optional Base Finisher.
<b>Booklet Maker Unit for Base Finisher</b>	Provides additional saddle-stitching/creasing function (operates with Base Finisher).
<b>2/3 Hole Puncher</b>	Provides additional 2 or 3 hole punching function (operates with Base Finisher).
<b>2,300-sheet High Capacity Feeder</b>	Increase the paper input capacity of C7765dn by 2,300 sheets.
<b>Fax Kit</b>	Enables connection to standard fax services.
<b>Wing Table</b>	Installed on the left side of the C7765dn, to provide additional worktop space or to place optional card readers.

1. Toner yield based on testing in accordance with ISO/IEC 19798. Yields vary with usage and environmental conditions.

2. For a copy of Limited Hardware Warranty, write Dell USA LP, Attn: Warranties, One Dell Way, Round Rock, TX 78682 or visit [dell.com/warranty](http://dell.com/warranty). For warranty information for other countries, see website: [dell.com/servicecontracts](http://dell.com/servicecontracts) and then select the country.

3. Available in US only: 4 hour 9 x 5 On-Site Service after Remote Diagnosis: Determination by online/phone technician of cause of issue; may involve customer access to inside of system and multiple or extended sessions. If issue is covered by Ltd Hardware Warranty ([www.dell.com/warranty](http://www.dell.com/warranty)) and not resolved remotely, technician will be dispatched, usually within a 4 hour average, following completion of Remote Diagnosis. 4 hour on-site response is available within defined, non-remote locations and support window of 5 days/week and 9 hours/day with a cut off local time of 1:00pm, for calls after 1:00pm service technician will be dispatched on the next business day. Availability varies. Other conditions apply.

## Product Specifications

<b>Printer specifications</b>	<b>Print speed (Mono/Color)</b>	Up to 35 ppm <sup>1</sup> (Letter/A4, Simplex/Duplex)
	<b>First page out time from Ready state</b>	Less than 9.0 seconds (Mono); less than 10.5 seconds (Color)
	<b>Print technology</b>	LED
	<b>Print resolution</b>	1200 x 2400 dpi
	<b>Operation panel</b>	8.5" Color Touch Screen (Resistive), 800 x 480 pixels, Viewing Area: 184.8 mm x 110.8 mm, Backlight: White backlight, Buttons: 27
	<b>Print language</b>	PCL 6, PCL 5C, Adobe® PostScript 3™, XPS, PDF v1.7
	<b>Fonts</b>	HP PCL® 6 Emulation: 80 scalable fonts PostScript® Level 3: 136 Scalable fonts
	<b>Processor speed</b>	1067 MHz
	<b>Memory</b>	2 GB <sup>2</sup> memory
	<b>Hard disk</b>	160 GB <sup>2</sup>
	<b>Maximum duty cycle</b>	Up to 153,000 pages per month <sup>3</sup>
	<b>Recommended monthly print volume</b>	8,000 to 30,000 pages per month
	<b>Mobile printing<sup>4</sup></b>	Dell Mobile Print (Android™ OS), Mobile Print App for Dell by Thinstream™ (iOS).
<b>Printer management</b>	Dell Printer Configuration Web Tool (EWS), Dell ColorTrack	
<b>Security features</b>	SNMP V3, AES256 Encryption, Authentication with LDAP/Kerberos/SMB, Secured PDF, Secure Print, Digital Certification verification	
<b>In-device solutions</b>	Optical Character Recognition (OCR), Job Flow Editor Utility, My Forms <sup>5</sup> , Google Drive Access <sup>5</sup> , USB Direct Print, Eco Copy <sup>5</sup> , Shortcut Menu <sup>5</sup>	
<b>Scan specifications</b>	<b>Scan type</b>	CCD flatbed scanner with DADF
	<b>Scan resolution</b>	Optical: 600 x 600 dpi , Software Enhanced: 600 x 600 dpi
	<b>Scan features</b>	Walk-up Scan (Scan to Email, Scan to FTP, Scan to SMB, Scan to USB, Scan to Internal Storage, Scan to URL, Scan to WSD); Walk-up Scan to Address Book (Email addresses - 2000 entries, Fax addresses - 2000 entries)
	<b>Scanning speed</b>	Up to 70 ipm (Simplex) for both mono and color at 200 dpi
	<b>Scan to media (file format)</b>	TIFF (Single/Multi), JPEG, PDF (V1.6), XPS
	<b>Scan size (max)</b>	Scan Platen and ADF: 11.69"x 17" (297 mm x 432 mm)
<b>Copy specifications</b>	<b>Copy speed (600 x 600 dpi, Color/Mono)</b>	Up to 35 cpm (1 to N, N to N)
	<b>First copy out time</b>	Mono Priority Mode: 8.5 seconds (color), 5.2 seconds (mono) Color Priority Mode: 7.2 seconds (color), 6.4 seconds (mono)
	<b>Copy resolution</b>	600 x 600 dpi
	<b>Maximum copies</b>	999
	<b>Copy settings</b>	Booklet Creation, Covers, N-up, Annotation, Duplex, ID Copy, Job Cancel, Sharpness, Color Balance, Background Removal, Color Saturation
	<b>Enlarge</b>	25 % to 400 % (Platen), 25 % to 400 % (ADF)
<b>Fax specifications (with optional Fax Kit<sup>6</sup>)</b>	<b>Modem speed/ Fax transmission speed</b>	Up to 33.6 kbps
	<b>Speed dial</b>	2,000 entries
	<b>Fax features</b>	Transmit: Broadcast, Delay/Schedule, Forward, Secure, Polling Receive: Secure, Polling, Receive and forward to email
<b>Duplex Automatic Document Feeder (DADF)</b>	<b>DADF Input capacity</b>	75 sheets (81 - 128 gsm), 110 sheets (38 - 80 gsm)
	<b>Media type</b>	Plain paper, Lightweight paper, Heavyweight paper
	<b>Media size</b>	A4 Short Edge Feed (SEF), B5 SEF, A5 SEF, Letter SEF, Folio (8.5" x 13") SEF (Europe and Asia only), Legal (8.5"x 13") (US and Canada only)
<b>Connectivity</b>	<b>Standard interfaces</b>	High speed USB 2.0 device port, Gigabit Ethernet port, 1 USB host port (front), 2 USB port (rear) via optional USB hub kit
<b>Operating Systems</b>	<b>Windows</b>	Windows® 8 (32/64 bit), Windows 7 (32/64 bit), Windows Vista (32/64 bit), Windows Server 2008 R1 & R2, Windows XP (32/64 bit), Windows 2003 Server (32/64 bit)
	<b>Macintosh</b>	Macintosh OS 10.5 to 10.8
	<b>Others</b>	SUSE® Linux Enterprise Desktop 10, 11; Red Hat Linux Enterprise Desktop 5, 6; Nowell® Netware Support; SAP R/3 Release 4.6B onwards; Citrix® Presentation Server™ 4.5, Citrix XenApp 5.0 to 6.5

<b>Standard media types, sizes and paper weights</b>	<b>Standard tray</b>	
	Media types and weights supported	Plain paper (60 gsm - 105 gsm), Recycled paper (60 gsm - 105 gsm), Preprinted (60 gsm - 105 gsm), Heavier paper (106 gsm - 256 gsm), Coated paper (106 gsm - 256 gsm), Label paper (106 gsm - 169 gsm), Transparency
	Media sizes	A5 Short Edge Feed (SEF), A4 SEF/Long Edge Feed (LEF), Tabloid (17" x 11") SEF, A3 SEF, B5 SEF/LEF, B4 SEF, Statement (5.5" x 8.5") SEF, Executive (7.25" x 10.5") SEF, Letter (8.5" x 11") SEF/LEF, Folio (8.5" x 13") SEF, Legal (8.5" x 14") SEF, Ledger (11" x 17") SEF Custom size (Min): 5.5" x 7.1" (139.7 mm x 182 mm) Custom size (Max): 11.7" x 17" (297 mm x 431.8 mm)
	<b>Multipurpose tray</b>	
	Media types and weights supported	Plain paper (60 gsm - 105 gsm), Recycled paper (60 gsm - 105 gsm), Preprinted (60 gsm - 105 gsm), Heavier paper (106 gsm - 256 gsm), Coated paper (106 gsm - 256 gsm), Label paper (106 gsm - 169 gsm), Envelope, Hagaki cards, Transparency
	Media sizes	A5 SEF, A4 SEF/LEF, A3 SEF, B6 SEF/LEF, B5 SEF/LEF, B4 SEF, Statement (5.5" x 8.5") SEF, Letter (8.5" x 11") SEF/LEF, Folio (8.5" x 13") SEF, Legal (8.5" x 14") SEF, Ledger (11" x 17") SEF, Tabloid (17" x 11"), Overweight Tabloid (12" x 18") (only through tray 2, 3, 4, 5), Post Card, Envelope Com-10 (SEF), Envelope Monarch (SEF), Envelope DL (LEF/SEF), Custom size (Min): 3.5" x 3.87" (88.9 mm x 98.4 mm) Custom size (Max): 12.59" x 19" (320 mm x 482.6 mm)
	<b>Optional High Capacity Feeder</b>	A4 SEF/LEF, Letter (8.5" x 11") SEF/LEF, Executive (7.25" x 10.5") LEF
<b>Printable area</b>	12.01" x 18.76" (305.0 mm x 476.6 mm)	
<b>Paper handling</b>	<b>Standard input sources</b>	4 x 560-sheet standard tray; 100-sheet multipurpose tray
	<b>Additional input capacity</b>	2,300-sheet High Capacity Feeder tray
	<b>Maximum input capacity</b>	4,640 sheets
	<b>Duplexer</b>	Automatic two-sided printing (Standard)
	<b>Output capacity</b>	400 sheets
<b>Physical specifications</b>	<b>Dimensions (W x D x H)</b>	Printer: 25.2" x 27.5" x 44.4" (640 mm x 699 mm x 1128 mm) Shipping: 29.6" x 30.4" x 46.4" (752 mm x 772 mm x 1179 mm)
	<b>Weight</b>	Printer: 290.4 lbs (132.0 kg) with consumables; Shipping: 347.6 lbs (158.0 kg)
	<b>Operating environment</b>	Temperature: 50 to 90 °F (10 to 32 °C), Humidity: 15 to 85% RH, non-condensing, Altitude: ≤ 8,200 ft (2,500 m)
	<b>Storage</b>	Temperature: 32 to 95 °F (0 to 35 °C), Humidity: 15 to 80% RH, non-condensing, Altitude: ≤ 8,200 ft (2,500 m)
	<b>Acoustics (Pressure emission bystander/Power emission)</b>	Base configuration (Printing): 49.1dB <sup>7</sup> /6.61B <sup>7</sup>
<b>Power specifications</b>	<b>Voltage</b>	
	110 VAC model	110 +/-10% VAC, 50 Hz ± 3 Hz/60 Hz ± 3 Hz
	<b>Power consumption</b>	Ready mode: 60W or less Power saver mode: 2W at 115 VAC
	<b>Typical energy consumption<sup>8</sup></b>	1.7 kWh/week at 115 VAC
<b>Environmental compliance</b>	Class A; ErP Lot 4, RoHS-compliant <sup>9</sup> , ENERGY STAR <sup>®</sup> 2.0 qualified <sup>10</sup> , Blue Angel (Germany), WEEE, REACH, EPEAT <sup>®</sup> Silver registered in US <sup>11</sup> , GS Mark	
<b>Supported languages</b>	English, French, German, Italian and Spanish	
<b>Product certifications</b>	<b>Safety certifications</b>	NEMKO (Nordic); CE Mark (EU); CSA certified for US and Canada; Germany GS Certified and other Safety Certifications required by individual countries
	<b>Other certifications</b>	CE mark (EU countries); EN 55022 (Class A); EN55024; EN61000-3-2 (Class A); EN 61000-3-3; R&TTE Directive (EU); FCC CFR Title 47, Part 15 Class B (USA); FCC Part 68 TCB (USA) CAN ICES-3(B) / NMB-3(B)
<b>Contents in box</b>	Dell Color Multifunction Printer - C7765dn, Ship-With Black Cartridge and Color (Cyan, Magenta, Yellow) Cartridges (15,000-page yield <sup>12</sup> ), Power cord, Quick Setup Sheet, Software and Instructions CD, Product Information Guide	

1. Measured in accordance with ISO IEC 27434 methodology. Actual print speeds will vary with use.

2. 1 MB means 1 million bytes, 1 GB means 1,000 megabytes or 1,000,000,000 bytes; total accessible capacity varies depending on operating environment.

3. Duty cycle is defined as the maximum number of imaged outputs a device could deliver in a month. This metric provides a comparison of robustness in relation to other Dell printers and multifunction printers.

4. Mobile printing support is available from November 2013. Requires the local administrator to provide access to download the relevant app for corporate use. Configuration of the printer and the mobile device must be on the same authorized wireless network.

5. From November 2013, these solutions will also be available for download as a firmware update from Dell.com/support.

6. Optional Fax Kit, sold separately.

7. Tested in accordance with ISO 7779 and reported in accordance with ISO 9296. Acoustics - Declared noise emission values of computer and business equipment.

8. For the Typical Energy Consumption value calculation details please visit: [www.energystar.gov/ia/products/fap/IE\\_TEC\\_Test\\_Procedure.pdf](http://www.energystar.gov/ia/products/fap/IE_TEC_Test_Procedure.pdf)

9. Meets the requirements of the EU Directive on the Restriction of the use of certain Hazardous Substances dated January 27, 2003.

10. For details on energy efficiency of ENERGY STAR<sup>®</sup> qualified products, refer to: [www.energystar.gov](http://www.energystar.gov)

11. EPEAT registration varies by country. See [www.epeat.net](http://www.epeat.net) for registration status by country.

12. Toner yield based on testing in accordance with ISO/IEC 19798. Yields vary with usage and environmental conditions.

# Configuration Options



**Configuration 1 (Standard)**

Standard tray	560-sheet x 4
Multipurpose tray	100-sheet
<b>Total</b>	<b>2,340-sheet</b>



**Configuration 2**

Standard Tray	560-sheet x 4
Multi-purpose Tray	100-sheet
<b>Total</b>	<b>2,340-sheet</b>

**With optional Base Finisher**



**Configuration 3**

Standard tray	560-sheet x 4
Multipurpose tray	100-sheet
<b>Total</b>	<b>2,340-sheet</b>

**With optional Base Finisher & Booklet Maker**



**Configuration 4**

Standard Tray	560-sheet x 4
Multi-purpose Tray	100-sheet
High Capacity Feeder	2,300-sheet
<b>Total</b>	<b>4,640-sheet</b>



**Configuration 5**

Standard Tray	560-sheet x 4
Multi-purpose Tray	100-sheet
High Capacity Feeder	2,300-sheet
<b>Total</b>	<b>4,640-sheet</b>

**With optional Base Finisher**



**Configuration 6**

Standard Tray	560-sheet x 4
Multi-purpose Tray	100-sheet
High Capacity Feeder	2,300-sheet
<b>Total</b>	<b>4,640-sheet</b>

**With optional Base Finisher & Booklet Maker**



**Optional 2/3 hole puncher**  
\*Applicable for configurations 2, 3, 5 and 6