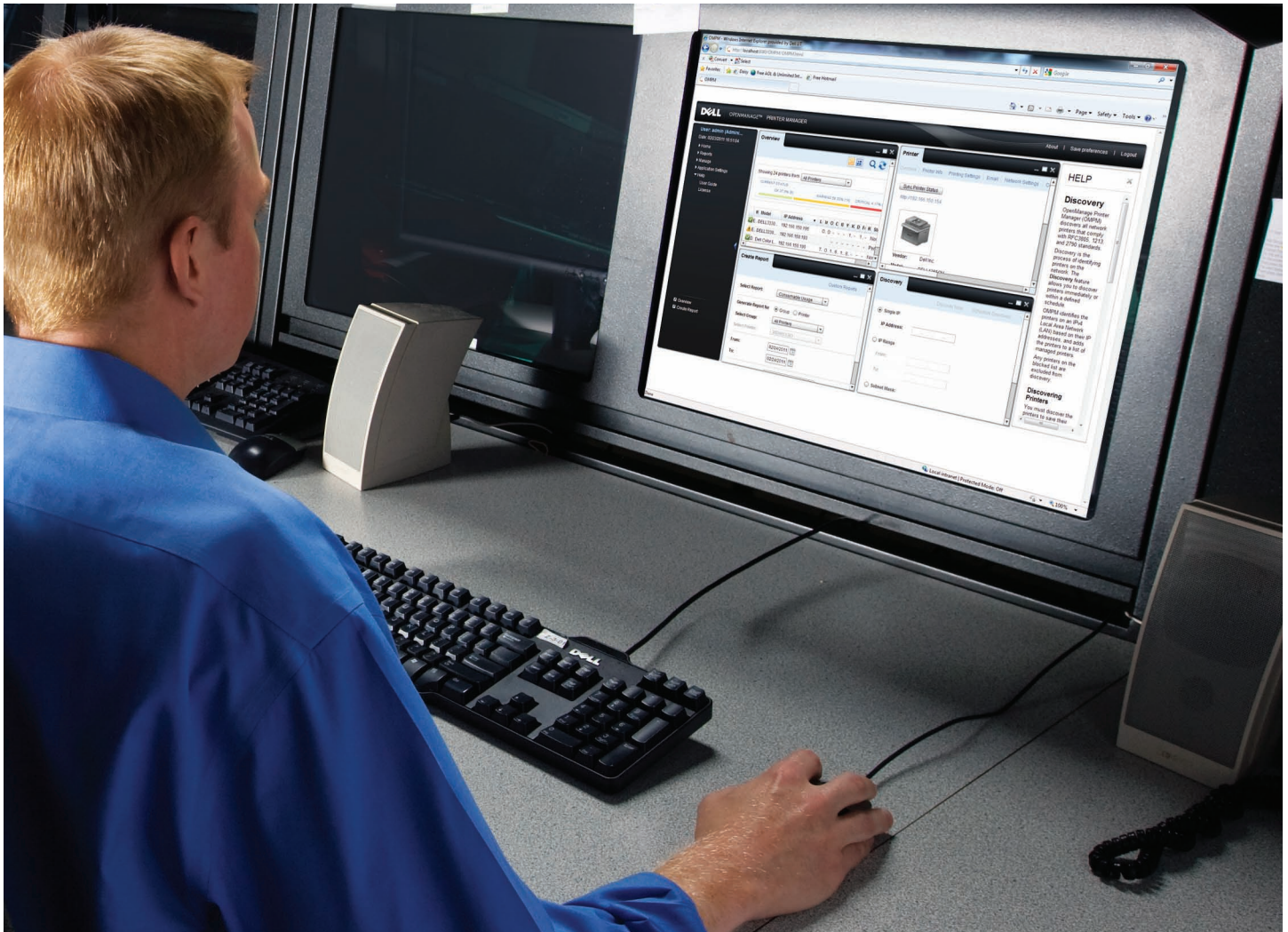
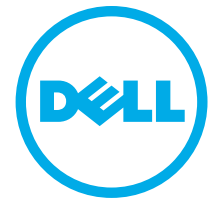


Dell OpenManage™ Printer Manager v2



Manage your
printer fleet easily
with the Dell
OMPMv2 printer
fleet management
tool

The Dell OpenManage™ Printer Manager v2 (Dell OPMv2) is a powerful web-based printer fleet management tool that helps you simplify printer management in a complex environment. Dell OPMv2 lets you proactively monitor, manage and review status reports on all your network printers¹ which can help you reduce the cost of IT resources such as equipment and labor.

The Dell OPMv2 gives you real time monitoring and status reporting of your network printers. You can respond to an issue faster to help maximize the availability of the printer and lead to increased productivity for your end users.

Dell OpenManage™ Printer Manager v2



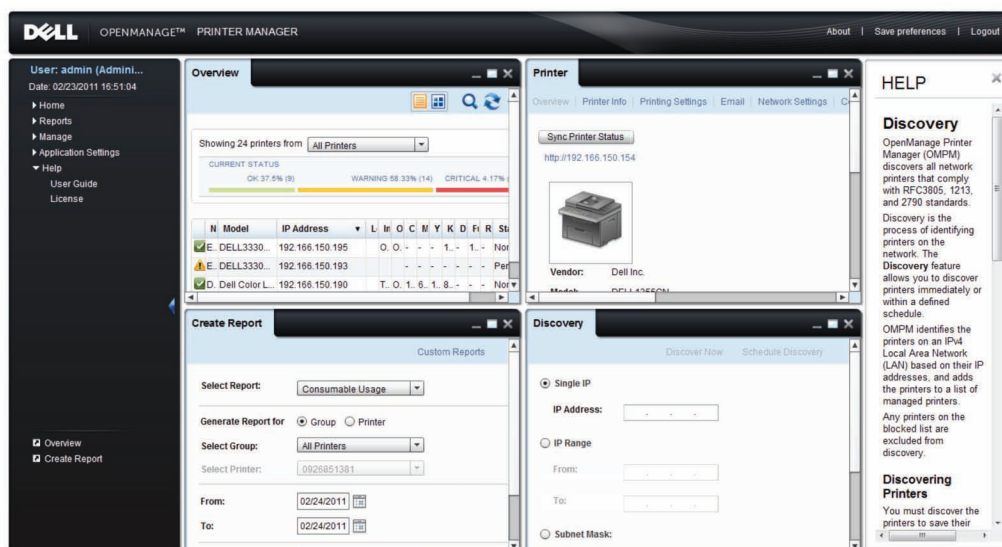
Manage your printer network from one unified view

Managing a fleet of network printers to meet end users' needs while controlling cost is an ongoing challenge for IT organizations. Today, many organizations use printers from more than one vendor which makes fleet management even more difficult. The Dell OPMv2 helps IT managers like you to monitor and manage large fleets of printers from one location quickly and easily to, in turn, help reduce costs and increase productivity.

Based on an open architecture design using both SNMP and HTTP protocols, Dell OPMv2 delivers powerful and comprehensive printer management capabilities for all printers with embedded web server on the network compared to other tools using only SNMP².

Reduce IT department workload and increase productivity:

- Control your multi-vendor network printer fleet centrally with one easy-to-use tool.
- Configure or reconfigure printers in a group where applicable instead of repeating the task for each individual printer.
- Improve printer firmware version management with firmware reporting and centralized patch deployment capability.
- Install and deploy easily and quickly using single installer file. No need to download and install multiple supporting files.
- Access Dell OPMv2 easily via web browser from anywhere on the network. No need to install separate client software.
- Enjoy ease of navigation and personalized dashboard with user-friendly Windows®-based interface.
- Minimize network traffic and search time with easy-to-use printer discovery feature.



Create personalized dashboard view with user-friendly Windows®-based interface.

Dell OpenManage™ Printer Manager v2



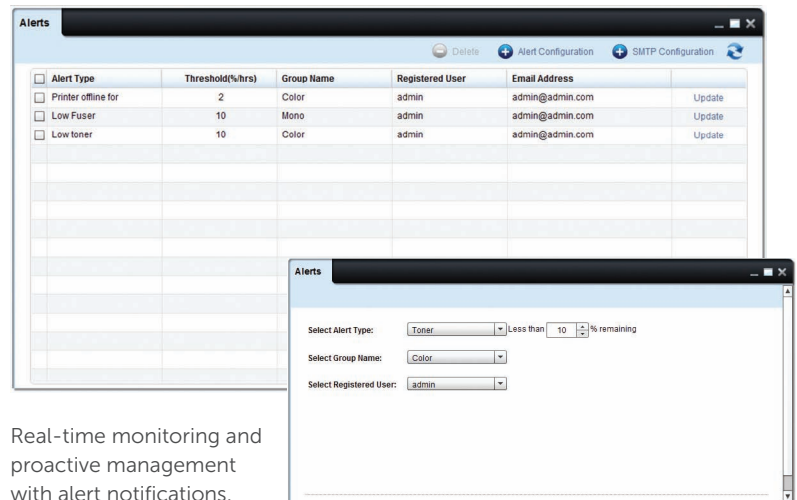
Manage your printer network from one unified view (continued)

Reduce printer management cost:

- Create comprehensive default reports and customizable reports to help ensure that business decisions are made with the latest, most accurate information.
- Schedule cleanup and backup of the Dell OMPMv2 database to help ensure that the stored data is relevant and storage resources maximized.

Increase end user productivity:

- Enjoy real time monitoring and alert notifications to allow for fast response to technical issues and consumable availability to help minimize the down time of the printers.



Real-time monitoring and
proactive management
with alert notifications.

Dell OMPMv2 key features, functions and benefits

Feature	Function	Customer benefits
Single installer file which includes all documents, application, database and dependencies such as Java, PostgreSQL, JBoss etc.	Ease of installation and deployment	<ul style="list-style-type: none">• Helps to increase IT department productivity in quickly deploying the management solution.
Friendly and flexible Windows®-based user graphics interface	Ease of navigation and use	<ul style="list-style-type: none">• Windows®-based widget user interface helps to reduce learning time of IT managers to get accustomed to the solution interface.• Ability to personalize and organize screens delivering excellent user experience.
Printer discovery	Detect all printers connected on the network	<ul style="list-style-type: none">• Simple and quick access to list of network printers for IT managers to perform necessary printer management tasks.
Grouping of printers	Select, define and manage printers based on groups	<ul style="list-style-type: none">• Helps to increase IT department productivity by performing common tasks across multiple printers.• Focus on managing relevant printers.
Printer status monitoring and alerts	Efficient printer management and system monitoring	<ul style="list-style-type: none">• Helps to minimize printing down time with real-time monitoring and proactive response for preventive actions and toner consumable replacements.
Comprehensive printer management information reporting	Quick access to real-time printer management information	<ul style="list-style-type: none">• Convenient access and choice of default reports — printer asset, consumable status, consumable usage and firmware version.• Helps IT managers make informed decisions.
Secure database with password protection, authentication and audit logs	Secure access and data protection	<ul style="list-style-type: none">• Allows IT managers to configure and secure printer fleet from unauthorized usage.

Dell OpenManage™ Printer Manager v2



Product description	The Dell OMPMv2 is the 2nd generation Dell printer management software for self-managed IT environments; it replaces the OMPM v1.2. It is a web-based application that has a web server, data collection agent and a database. This standalone printer management software monitors in real time and reports the status of network printers.
Operating environment	
Compatible operating systems	Windows Server 2008 32/64-bit (with installation of 32-bit optional package), Windows Server 2003 32/64-bit, Windows 7 Business, Ultimate Windows Vista Business, Windows XP Pro.
Virtual PC software	VMware Workstation, VMware Server and Win 7 Virtual PC.
Compatible browser	Internet Explorer 6+, FireFox 2+, Chrome 1+, Safari 3+.
Compatible communication protocols	SNMP v1, v2, v3; HTTP v1.1; SMTP with authentication and ability to specify port number.
Hardware requirements	
<= 100 printers	Minimum system config.: 1 GHz, 1 GB ³ RAM; Recommended config: 2 GHz, 2 GB RAM;
<= 1,500 printers	Minimum system config.: 2 GHz+ dual core, 3 GB RAM; Recommended config: 2 GHz+ dual core, 4 GB RAM
<= 5,000 printers	Minimum system config.: 2 GHz+ dual core, 4 GB RAM; Recommended config: 2 GHz+ quad core, >4 GB RAM
Supported printers	
Dell models supported but not limited to	Dell 7130cdn, 7330dn, 5530dn, 5535dn, 5350dn, 5330dn, 5310n, 5230dn, 5210n, 5130cdn, 5110cn, 3330dn, 3333dn, 3335dn, 3115cn, 3130cn, 2355dn, 2335dn, 2350dn, 2330dn, 2145cdn, 2135cn, 2130cn, 1320c Network, 1235cn, 2155cn/cdn, 2150cn/cdn, 1355cnw, 1355cn, 1350cnw, 1135n, 1130n and future Dell network printers.
Other branded printers	Network Printers with Embedded Web Server (EWS) with customized OMPM templates ⁴ have full access to Dell OMPMv2 functions ⁴ . Network Printers with EWS without OMPM templates ⁴ and Network printers without EWS are supported via SNMP with only limited access to OMPM functions.
Key features	
Printer discovery	Discover supported network printers using Single IP and Wild card, by IP range and subnet mask, from CSV (comma separated values) file. Schedule search for printers on a regular basis using the various methods listed above. The default frequency for scheduled discovery is once a week.
Printer management	
Configuration manager	The configuration of the printers can be done individually or in groups and it is template based. Once a group is created and the configuration complete, users can add printers automatically to the group via discovery rules. Default groups are Color printers, Mono printers, Ungrouped printers, Blocked printers, and All printers.
Management console	Task oriented, Windows®-based and intuitive graphical user interface design. One to many printer management console. Consolidation of consumables management between locations and printer models. Client - Server Application is accessible through web browser. Real-time view of selectable printer status information. System events log. Audit logs.
Data collection	Supported database is PostgreSQL. The Dell OMPMv2 queries network printers that are being managed to determine their health. It is done at a frequency of one hour (default). Dell OMPMv2 maintains a daily history of data for a maximum of last 2 years. The Dell OMPMv2 allows users to schedule the frequency of the clean up and backup of the database. Data that is older than the specified months will be automatically purged. A roll up operation runs daily to summarize the minute and the hourly data to day level data, and all the hourly data would be deleted. Similarly, all the daily data would be summarized to monthly data, but the daily data will not be deleted from the database. The minimum period is 1 month and the maximum is 12 months. Logs would be deleted during cleanup with no summary information.
Report manager	Reports are available in CSV and PDF formats. Pre-defined default reports are as follows: Printer Asset or inventory report which includes Printer status report, Consumable status report, Consumable usage report and Printer firmware report. Reports may be generated on demand or as scheduled and even emailed automatically. Custom reports are supported too.
Location map	Easily monitor the status of the printers with color coded printer icons. Search for a printer on the map via physical location, IP address, service tag, printer name or serial number and manage the printer directly on the map.
Alerts manager	Dell OMPMv2 is designed to send email alerts to a user defined email address based on alert rules.
Printer profile settings	Dell OMPMv2 is able to push a chosen printer's settings to other discovered printers of the same model. All fields of that chosen printer will be copied except for the listed fields which are needed to identify each individual printer — Printer name, Printer description, Printer IP and Printer Serial Number. Dell OMPMv2 is able to push firmware updates to individual or multiple printers of the same model.
Security features	
VeriSign	Dell OMPMv2 installer package must be signed with Dell VeriSign signature.
Database	Password protected.
Users	Users and their roles are authenticated before they can gain access to Dell OMPMv2.
Tracking	Dell OMPMv2 has a session management system that tracks all users and tasks.
Log	Dell OMPMv2 logs and track users' and application actions for audit purposes.
Supported languages	English, French, Italian, German, Spanish and Simplified Chinese.
Service support	To receive service support, customers must have valid Limited Hardware Warranty ⁵ and 1 - 5 Years Dell ProSupport™ ⁶ available during the term of the warranty of the Dell printer.

¹ Dell OMPMv2 is capable of fully managing non-Dell branded network printers with Embedded Web Servers (EWS); For non-Dell branded network printers without EWS, there is limited management capability enabled through SNMP.

² Based on a comparison of printer management tool from HP, Lexmark, Samsung and Xerox using only SNMP to manage other branded printers in January 2011.

³ GB means 1 billion bytes; significant system memory may be used to support graphics, depending on system memory size and other factors.

⁴ Templates creation instructions are given in the User Guide.

⁵ For a copy of the Limited Hardware Warranty, write Dell USA LP, Attn: Warranties, One Dell Way, Round Rock, TX 78682 or visit www.dell.com/warranty.

⁶ Availability and terms of Dell Services vary by region. For more information, visit www.dell.com/servicedescriptions