

Symantec NetBackup™ 7 Clients and Agents

Complete protection for your information-driven enterprise

Overview

Symantec NetBackup provides a simple yet comprehensive selection of innovative clients and agents to optimize the performance and efficiency of your backup and recovery environment. These provide high-performance, online backup, and recovery of business-critical databases and applications; enable backup and recovery operations over storage networks; and deliver high levels of data security and complete system-level recovery. Depending on your needs, NetBackup has flexible client options to fit your environment and your budget.

Centralized management for multiple databases and applications—Reduces the complexity of backing up large environments

Optimization for high-performance SAN-based backups—Simplify how you manage and recover data for SAN-based backups

Advanced virtual machine protection and recovery—Reduce recovery and backup times as well as storage consumption with new NetBackup features

Backup schedule and method flexibility—Support for scheduled, unattended backups; manual backups; and user backups

Standard Client

- Deduplication
- Bare metal restore
- Client encryption

Enterprise Client

- SAN media server
- SAN client
- Snapshot client
- VMware protection
- Microsoft Hyper-V

Application and Database Pack*

- All databases
- All applications (excludes SAP*)

* The SAP agent is sold separately; it is not part of the database pack.

***Integrated NBU and Deduplication Application and Database pack**

NetBackup Standard Client

The NetBackup Standard Client contains key features such as deduplication, bare metal restore, and client encryption. It resides on the same server as the application, database, or files that are being protected and sends data to a NetBackup server for protection or receives data during a recovery.

Embedded deduplication

Source and target-based deduplication are built right into NetBackup 7. NetBackup delivers deduplication everywhere, for remote sites or data centers, and is ideal for virtual environments.

- **Client deduplication**—Removes redundant data at the source, which lowers CPU, I/O, and memory utilization compared to a traditional backup, freeing up more client resources for production services in physical and virtual environments.
- **Media server deduplication**—A scalable deduplication engine that can live in one or more NetBackup servers, which reduces the size of backup images by up to 80%.

Bare Metal Restore™

Provides all the files and services necessary to perform system recovery, including the ability to perform diskless network booting, temporary OS installation, and disk configuration. This feature boasts a complete system recovery time of approximately 15 minutes on any platform.

Client encryption

Data is encrypted at the source/client to provide a very high level of data security while in transit over the network and on storage media. Client encryption is ideal for protecting smaller, yet dedicated clients and databases. It supports a

Data Sheet: Data Protection

Symantec NetBackup™ 7 Clients and Agents

variety of encryption algorithms, including 128-bit and 256-bit as well as legacy 40-bit and 56-bit encryption methods.

NetBackup Enterprise Client

The NetBackup Enterprise Client combines all of our advanced capabilities in one easy-to-use package. When you purchase the Enterprise Client, the Standard Client is included.

SAN media server

Designed for customers who would prefer to utilize their storage area network (SAN) for backup operations instead of their local area network (LAN). This feature enables LAN-free data protection with high-performance access to shared resources.

SAN client

Offloads backup traffic from the LAN and allows for fast backups over the SAN at approximately 150 MB/sec. The SAN client can send data to a variety of NetBackup disk options and allows you to back up and restore to disk over the SAN. Data is sent to media servers via SCSI commands over the SAN rather than TCP/IP over the LAN to optimize performance.

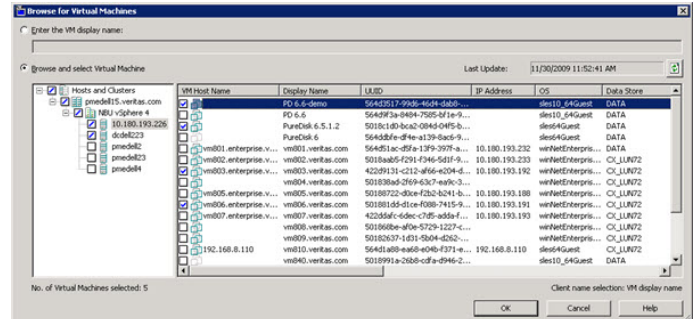
Snapshot client

Enables low-impact backup and recovery for databases and applications. By enabling you to leverage a variety of software or hardware snapshot capabilities, this feature can greatly reduce the amount of data being transferred during backup and recovery as well as dramatically improve backup performance and recovery time for mission-critical databases and applications.

VMware protection

NetBackup can provide both client and virtual machine (VM) level protection using the vStorage API. This integration enables a single backup of VMware images to deliver granular file-level or full image-level recovery, reducing both the time and cost of VMware data protection.

- Improves speed by 50% and reduces storage by up to 40% versus previous versions' approaches with VMware Consolidate Backup
- Only NetBackup offers instant recovery of files from block-level increment backups (BLIB)
- Complete deduplication across all virtual and physical systems regardless of backup method
- Automate and manage snapshots inside a virtual machine from host and array-based providers
- No backup or recovery compromises for customers who back up directly to tape



Direct vCenter integration provides information as to which virtual machines are available for automatic backup.

Microsoft® Hyper-V

Reduce the performance impact of virtual machine (VM) backup and recovery using NetBackup. Automatically discover existing virtual machines as well as those not currently protected. The NetBackup Enterprise Client delivers even more benefits:

Data Sheet: Data Protection

Symantec NetBackup™ 7 Clients and Agents

- Eliminate the impact of backup with off-host/server-less backup of individual VMs
- Protect VMs without using a client or agent inside the virtual machine
- Save time and resources: get two types of recovery—VM- and file-level—from one backup operation
- Faster daily backups with incremental backups of entire VMs
- No backup or recovery compromises for customers who back up directly to tape

Database protection

IBM® DB2® UDB Universal Database

NetBackup software works with IBM DB2 native backup and recovery utilities to protect DB2 databases and archive logs. NetBackup offers unprecedented techniques for protecting DB2 databases—from integrated block-level backup and recovery to instant recovery via the NetBackup Snapshot Client.

Features and benefits

- **Flexible backup options**—Full, incremental, and block-level backups as well as backup of archive logs via the user exit program
- **Wizard-based configuration**—Performs step-by-step configuration of DB2 backup and recovery via an intuitive, graphical, wizard-based interface

IBM Informix Dynamic Server

NetBackup protects IBM Informix Dynamic Server and IBM Informix Extended Parallel Server running on many of today's popular operating platforms. NetBackup, in conjunction with the Informix ON-Bar utility, provides a methodology to help ensure that business-critical Informix applications are safely backed up and can be recovered quickly.

Features and benefits

- **Continuous logical log backup**—Configure automated logical log backup to help prevent logical logs from filling up and locking up the database server
- **Flexible backup options**—Back up and restore at the dbspace, blob space, and logical log file level

Microsoft SQL Server

NetBackup for Microsoft SQL Server delivers comprehensive data protection for SQL Server and SQL Server databases.

Features and benefits

- **High-speed recovery**—Verify-only restores can be used to verify the SQL contents of a backup image without actually restoring the data
- **Point-in-time recovery**—Recovers SQL databases to the exact point in time or transaction log mark by rolling forward only the transactions that occurred prior to a user-specified date and time
- **Granular database view**—Display of database object properties provides backup and recovery flexibility

Oracle®

The NetBackup Oracle Agent is tightly integrated with the Oracle Recovery Manager (RMAN) to deliver high-performance backup and recovery solutions. It supports Oracle Real Application Clusters (RAC), offers continuous data protection, and can clone Oracle databases from backup images.

Features and benefits

- **Online/Hot Oracle backups**—Keep the database online and increase reliability by eliminating manual processes and scripts
- **RMAN integration**—Tightly integrated with the Oracle Recovery Manager (RMAN) wizard to deliver high-performance backup and recovery

Data Sheet: Data Protection

Symantec NetBackup™ 7 Clients and Agents

- **Eliminate backup and recovery windows**—Using snapshots and continuous data protection with Symantec NetBackup™ RealTime

Sybase®

NetBackup for Sybase offers high-performance backup and recovery for Sybase Adaptive Server Enterprise (ASE) databases on leading UNIX and Windows platforms.

Features and benefits

- **Parallel backup and recovery**—Supports the parallel backup and restore capabilities of the Sybase ASE Backup Server. This permits you to run more than one tape device at a time for a single Sybase ASE backup or restore, helping to reduce the time necessary to complete the operation
- **Track backup history**—Detailed views of backup history simplify restores, as backups of databases and transaction logs are easier to track

Application protection

IBM Lotus® Notes and Lotus Domino® server

Symantec offers high-performance backup and recovery for Lotus Notes and Lotus Domino server with NetBackup for Lotus Notes. Administrators can leverage intuitive GUIs to help set consistent backup policies across the enterprise and to quickly identify critical Lotus files or databases when they need to be restored.

Features and benefits

- **Alternate restoration techniques**—With backups not tied to a specific backup server, NetBackup software can restore Lotus data either on an alternate system or in an alternate directory
- **Advanced Lotus integration**—Support for partitioned Lotus servers and Lotus clustering

Microsoft Active Directory®

For any enterprise, Microsoft Active Directory is integral in managing network services. Therefore, the comprehensive protection and quick recovery of Active Directory is critical.

Features and benefits

- **Recover any Active Directory item**—Granular recovery including the ability to recover all items with full attributes (for example, user, server, printers) to satisfy both daily and disaster recovery (DR) requirements with one backup image
- **Eliminate Active Directory server reboot**—Minimize downtime and keep the application up and running
- **Ease of use and control**—Leverage Microsoft VSS system state backup for ease of use and control

Microsoft Exchange® Server

Symantec recognizes the need for nondisruptive mechanisms to protect Exchange data, along with all data in the enterprise. NetBackup for Microsoft Exchange helps provide the performance and flexibility required for effective backup and recovery operations within large Exchange based environments.

Features and benefits

- **Online backup**—Complete, nondisruptive protection of the Exchange database and mailbox components, including mailbox-level backup
- **Flexible restore options**—Rapid, granular recovery of databases and mailboxes, including support for performing individual message restores
- **Eliminate MAPI backups**—Enable granular recovery of the full application and a single email with only one backup pass and one copy stored

Microsoft Office SharePoint® Server

Features and benefits

- **Easy to use**—One console can be used to protect SharePoint and Windows® services; includes server farm configuration and single sign-on for databases
- **Granular recovery**—Save time and storage by recovering SharePoint files, including different versions of a file, sites, sub-sites, and lists such as calendars and links

SAP

The integration of NetBackup for SAP NetWeaver with the SAP DBA administrative interface, along with the BR backup and recovery commands, provides a solid, SAP NetWeaver-centric data protection solution for customer-specific configurations on the UNIX, Windows, and Linux® platforms.

Features and benefits

- Oracle RMAN support—Leverage Oracle RMAN benefits when protecting SAP NetWeaver using Oracle
- No backup window and instant recovery—By using NetBackup RealTime continuous data protection and live replication
- Flexible implementation—Perform database operations through NetBackup, or use the SAP tools (SAPDBA interface) independently

Symantec Enterprise Vault™

NetBackup now automates the protection and recovery of Enterprise Vault environments.

Features and benefits

- Simplify protection of Enterprise Vault servers—Automatically discover the various servers and components within your Enterprise Vault environment that need protection, including partitions and their associated databases

- Leverage snapshot technology—The backup of the snapshot is done quickly and efficiently, eliminating the need for manual scripts or the manipulation of registry settings
- Effective disaster recovery—Centrally manage the disaster recovery process of the Enterprise Vault partitions and databases

Database and Application Support

Database and Application Support	NetBackup Agent Support							
	HP-UX PA-RISC	HP-UX IA64	IBM AIX	Red Hat	SUSE SLES	Microsoft Windows	Sun Solaris Sparc	Sun Solaris x86-64
IBM DB2		X	X	X	X	X	X	X
IBM Informix	X	X	X				X	
IBM Lotus Notes			X	X	X	X	X	
Microsoft Exchange Server						X		
Microsoft SharePoint Portal Server						X		
Microsoft SQL Server						X		
Microsoft Active Directory						X		
Oracle	X	X	X	X	X	X	X	X
SAP	X	X	X	X	X	X	X	X
Sybase	X	X	X	X		X	X	
Symantec Enterprise Vault						X		

More information

Visit our website

<http://enterprise.symantec.com>

To speak with a Product Specialist in the U.S.

Call toll-free 1 (800) 745 6054

To speak with a Product Specialist outside the U.S.

For specific country offices and contact numbers, please visit our website.

Data Sheet: Data Protection
Symantec NetBackup™ 7 Clients and Agents

About Symantec

Symantec is a global leader in providing security, storage and systems management solutions to help consumers and organizations secure and manage their information-driven world. Our software and services protect against more risks at more points, more completely and efficiently, enabling confidence wherever information is used or stored.

Symantec World Headquarters

350 Ellis St.
Mountain View, CA 94043 USA
+1 (650) 527 8000
1 (800) 721 3934
www.symantec.com