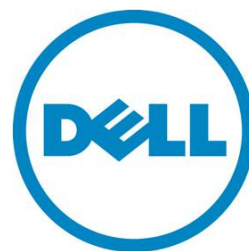

Cable Routing Procedures for the Dell™ PowerEdge™ VRTX System

This Dell Technical White Paper explains the best practices for routing and securing the cables exiting the back of the VRTX system.

Greg Henderson

Data Center Infrastructure Engineering

June 2013



This document is for informational purposes only and may contain typographical errors and technical inaccuracies. The content is provided as is, without express or implied warranties of any kind.

© 2013 Dell Inc. All rights reserved. Dell and its affiliates cannot be responsible for errors or omissions in typography or photography. Dell, the Dell logo, and PowerEdge are trademarks of Dell Inc. Other trademarks and trade names may be used in this document to refer to either the entities claiming the marks and names or their products. Dell disclaims proprietary interest in the marks and names of others.

June 2013 | Rev 1.0

Contents

Introduction.....	4
Section 1: Cabling a PowerEdge VRTX with a CMA.....	4
1.1. Connecting the cables to the system	4
1.2. Routing the power cables through the strain reliefs	5
1.3. Installing the CMA.....	5
Section 2: Replacing a power supply on a PowerEdge VRTX system with a CMA.....	7
Section 3: Replacing a blower module on a PowerEdge VRTX system with a CMA.....	7
Section 4: Cabling a PowerEdge VRTX system without a CMA.....	8

Figures

Figure 1. System with cables installed	4
Figure 2. Routing power cables through the strain reliefs	5
Figure 3. Routing the cables through the CMA.....	5
Figure 4. Left-side mounted CMA installation.....	6
Figure 5. Right-side mounted CMA installation	6
Figure 6. Replacing a power supply.....	7
Figure 7. Replacing a blower module.....	8
Figure 8. Cable routing without a CMA.....	8

Introduction

This white paper covers recommended cable routing procedures for the Dell™ PowerEdge™ VRTX system in the following racks:

- PowerEdge 2410, 4210
- PowerEdge 2420, 4220, 4820 (including wide and deep versions)
- PowerEdge Energy Smart 4020S, 4620S

If you are using the optional cable management arm (CMA), following these procedures will allow you to extend the system from the rack for service without powering down or disconnecting the cables. If you are not using the CMA, following these procedures will ensure secure attachment and strain relief of the cables behind the system.

For guidelines on how to route cables within the rack, refer to the Dell *Best Practices Guide for Rack Enclosures* white paper. For additional details regarding potential interferences between the CMA and rear-mount power distribution units (PDUs) in Dell racks as well as general information about third party rack compatibility, refer to the *Dell Enterprise Systems Rail Sizing and Rack Compatibility Matrix* located at <http://content.dell.com/us/en/enterprise/d/business-solutions-engineering-docs-en/Documents-rail-rack-matrix.pdf.aspx>.

Section 1: Cabling a PowerEdge VRTX with a CMA

This section details how to cable the PowerEdge VRTX system using a CMA. If you are cabling the system without the optional CMA, refer to Section 4.

Follow the instructions contained in the *Rack Installation Instructions* in the rail kit to install the server into the rack. Once installed, use these instructions to install the cables. All illustrations in the following sections were created using a PowerEdge VRTX system.

NOTE: The PowerEdge VRTX system is not compatible with any other Dell rails or CMAs.

1.1. Connecting the cables to the system

Attach the CMA tray to the back of the rails as described in the *CMA Installation Instructions* provided in the CMA kit. Connect all applicable cables to the rear of the system and verify that all connections are secure. See Figure 1.

Figure 1. System with cables installed



1.2. Routing the power cables through the strain reliefs

After you have installed the tray and cables, route the power cables through the strain reliefs located on the power supply handles as shown in Figure 2.

Figure 2. Routing power cables through the strain reliefs

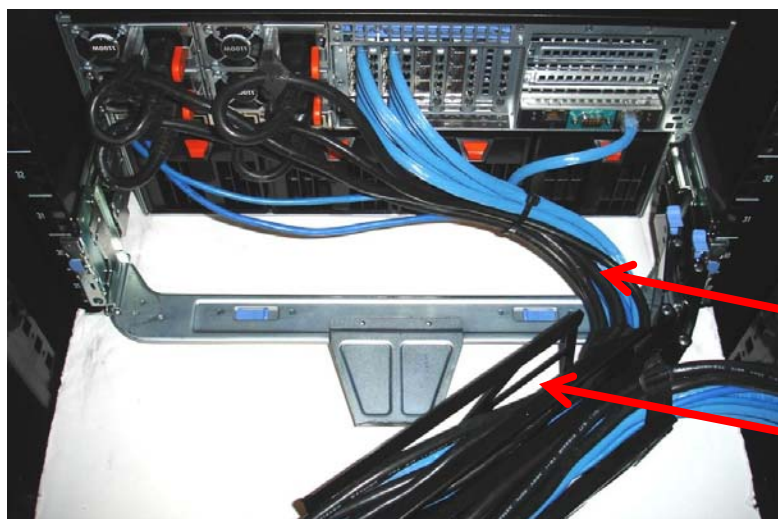


1.3. Installing the CMA

NOTE: If you are installing fiber-optic cables in the CMA, a cable bend radius of at least 1 inch must be maintained throughout the length of the cable. It is recommended that fiber-optic cables be routed on the exterior of the cable bundle to increase the bend radius of the fiber-optic cables through the CMA. Additionally, a large amount of slack at the entrance and exit of the CMA is recommended.

1. Install the CMA on the rear right or rear left side of the rails by attaching both CMA housings to the attachment brackets on the rails as described in the *CMA Installation Instructions*.
2. Route the cables through the CMA while avoiding twisting the cables. Use the hook-and-loop straps on the CMA to secure the cables.
3. If the cable bundle includes a keyboard, video, and mouse system interface pod (KVM SIP), it can be placed inside the CMA basket. See Figure 3.

Figure 3. Routing the cables through the CMA



NOTE: Do not store excess cable slack inside the CMA. The cables may protrude through the CMA, thus causing binding and potentially damaging the cables.

Cables entering the CMA should have a small amount of slack to avoid cable strain when the CMA is extended.

KVM SIP can be placed inside the CMA basket.

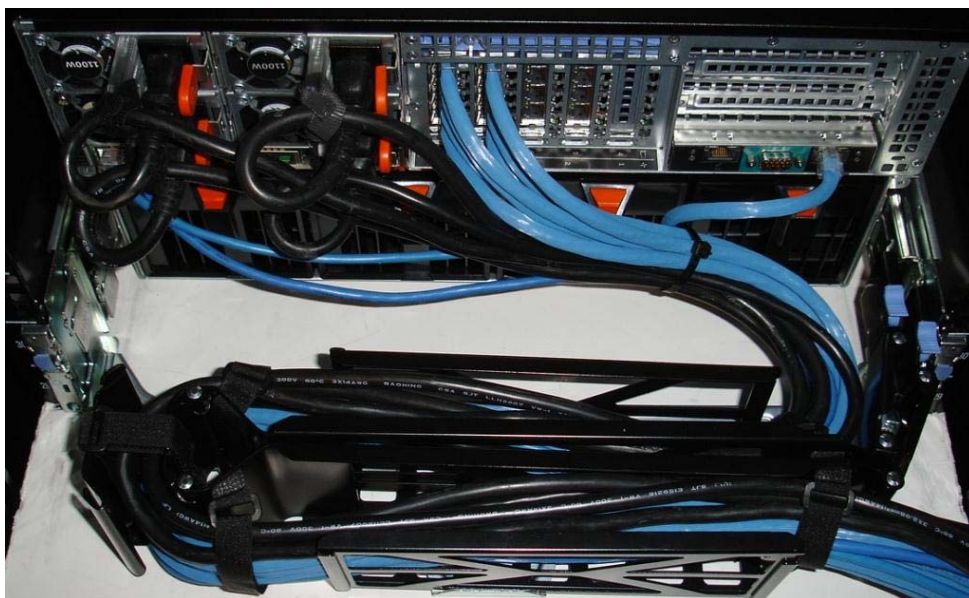
4. Once you have routed all of the cables through the CMA, dress the cable slack between the back of the system and the entrance of the CMA using the tie wraps provided in the CMA kit.
5. Clip off the excess length of material from the tie wraps. Make sure that the heads of the tie wraps are positioned so as to avoid interference with adjacent systems. Return the CMA to the closed (retracted) position.
6. Extend the system out of the rack to verify that there is sufficient slack in the cables on both ends of the CMA.

See Figure 4 for an example of a completed left-side mounted CMA installation. See Figure 5 for an example of a completed right-side mounted CMA installation.

Figure 4. Left-side mounted CMA installation



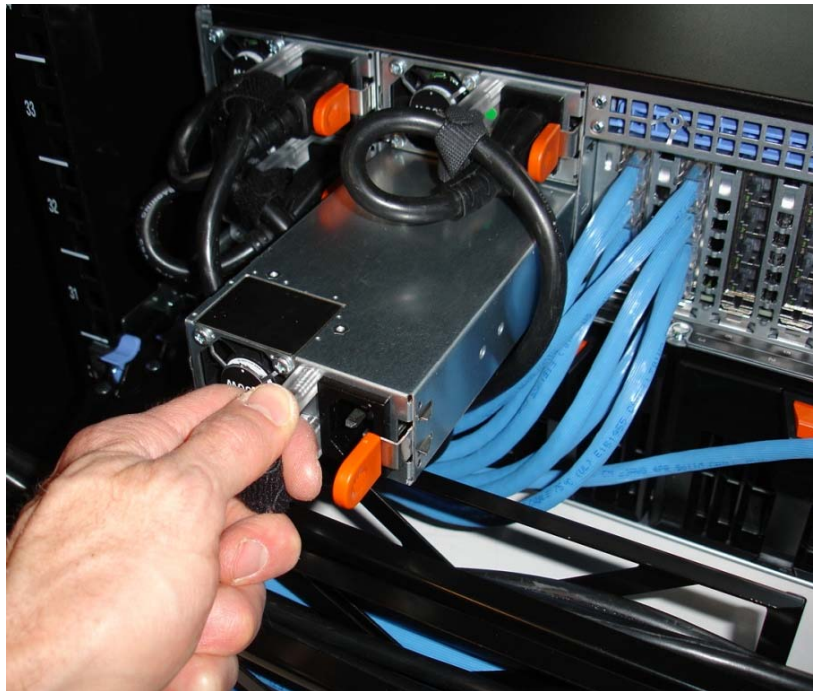
Figure 5. Right-side mounted CMA installation



Section 2: Replacing a power supply on a PowerEdge VRTX system with a CMA

1. Disengage the strain relief and disconnect the power cord from the power supply.
2. Replace the power supply as shown in Figure 6. Note that the CMA can remain in the closed position since all of the power supplies clear the top of the CMA during removal/insertion.
3. Plug in the power cord and re-engage the strain relief.

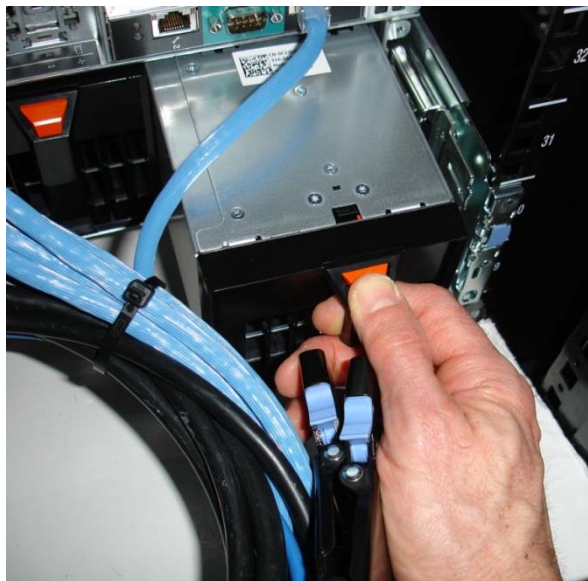
Figure 6. Replacing a power supply



Section 3: Replacing a blower module on a PowerEdge VRTX system with a CMA

1. Swing the CMA to its service position as described in the *CMA Installation Instructions* provided with the CMA kit.
2. Remove the tray from underneath the CMA as described in the *CMA Installation Instructions*.
3. Replace the blower module as shown in Figure 7. Note that the CMA may have to be detached from the rails temporarily in order to provide sufficient clearance for removing/inserting the blower module.
4. Reattach the CMA to the rails (if necessary), replace the CMA support tray, and return the CMA to the closed (retracted) position.

Figure 7. Replacing a blower module



Section 4: Cabling a PowerEdge VRTX system without a CMA

NOTE: The CMA for Dell PowerEdge VRTX is optional. Without the CMA installed, the system must be powered down and all cables disconnected before it can be extended out of the rack.

1. Connect all applicable cables to the rear of the system and verify that all connections are secure.
2. Using the hook-and-loop straps supplied with the rail kit, bundle the cables and secure them to either the left or right CMA attachment bracket as described in the *Rack Installation Instructions*. See Figure 8 for an example of data cables secured to the right CMA bracket and power cables secured to the left CMA bracket (as viewed from the rear of the system).
3. It is recommended that the cables be secured to the outer brackets, but cables may be secured to the inner brackets as well if desired.

Figure 8. Cable routing without a CMA

