



Integrated Data Protection Appliance DP4400

DELL EMC INTEGRATED DATA PROTECTION APPLIANCE (IDPA) DP4400

Perfect balance of power and simplicity at the lowest total cost-to-protect

Leveraging the same proven enterprise-level technologies that have made Dell EMC the #1 market leader in data protection for enterprise organizations—the IDPA DP4400 was built from the ground up for mid-size organizations. It offers converged data protection combining protection storage, servers & software, search & analytics—in a single, customer-installable 2U appliance, and delivers up to 2x shorter backup windows. The IDPA DP4400 includes everything needed to deliver backup, replication, deduplication, instant access for application test and dev as well as cloud disaster recovery and long-term retention add-on capabilities, in a single integrated system. It provides the perfect mix of power and simplicity with simplified management, deployment, and grow-in-place capacity expansion, while also delivering the largest application ecosystem, unmatched performance, and native cloud readiness. The IDPA DP4400 delivers **simply powerful data protection** at the lowest cost-to-protect, and is guaranteed.

Specifications

Table 1. IDPA DP4400 Performance and Capacity

| | DP4400 | |
|--|-------------------------|---|
| MAXIMUM THROUGHPUT¹ | Up to 9.0 TB/hr | ¹ Top-end values are maximums – actual capacity & throughput depends on application workload, deduplication, and other settings. ² Mix of typical enterprise backup data (file systems, databases, email, developer files). The low end of capacity range represents a full backup weekly or monthly, incremental backup daily or weekly, to system capacity. The top end of the range represents full backup daily, to system capacity. All capacity values are calculated using Base10 (i.e., 1 TB = 1,000,000,000,000 bytes). |
| MAXIMUM LOGICAL CAPACITY^{1, 2} | Up to 5.3 PB | |
| W/ CLOUD TIER | Up to 15.9 PB | |
| MAXIMUM USABLE CAPACITY | 24 to 96 TB | |
| W/ CLOUD TIER | Up to 288 TB | |
| INSTANT ACCESS AND RESTORE | 1,000 IOPS up to 32 VMs | |
| BUILT-IN NETWORKING | 8x10GbE | |

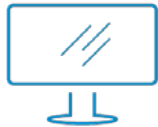


| | DP44400 |
|--|--|
| WEIGHT (LBS) | 72.8 lbs (33 kg) |
| POWER Dual Redundant 750W 100-240V~ Autoranging 50/60 HZ | 475 VA (MAX @ 35 DEGREES C) |
| THERMAL RATING (BTU/HR) | 1620 BTU/hr |
| DIMENSIONS | 17.09 x 28.17 x 3.42 (inches WDH) 434 x 715.5 x 86.8 (mm WDH) |
| OPERATING TEMPERATURE/ ALTITUDE | 50°F to 95°F (10°C to 35°C) |
| OPERATING HUMIDITY | 10% to 80% relative humidity with 29°C (84.2°F) maximum dew point. |
| NON-OPERATING (TRANSPORTATION) TEMPERATURE | -40°F to 149°F (-40°C to 65°C) |

Table 3. IDPA DP4400 Regulatory approvals³

| | DP4400 |
|-----------------------------|--|
| SAFETY | UL 60950-1, CSA 60950-1, EN 60950-1, IEC 60950-1, GS, SABS, GOST, IRAM |
| EMISSIONS | FCC Class A, EN 55022, CISPR 22, VCCI, BSMI, MIC, ICES-003 |
| IMMUNITY | EN 55024, CISPR 24 |
| POWER LINE HARMONICS | EN 61000-3-2 |

³ Derate 1.1°C/1,000 ft. above 7,500 ft. to 10,000 ft.



[Learn more](#) about Dell EMC Integrated Data Protection Appliance



[Contact](#) a Dell EMC Expert