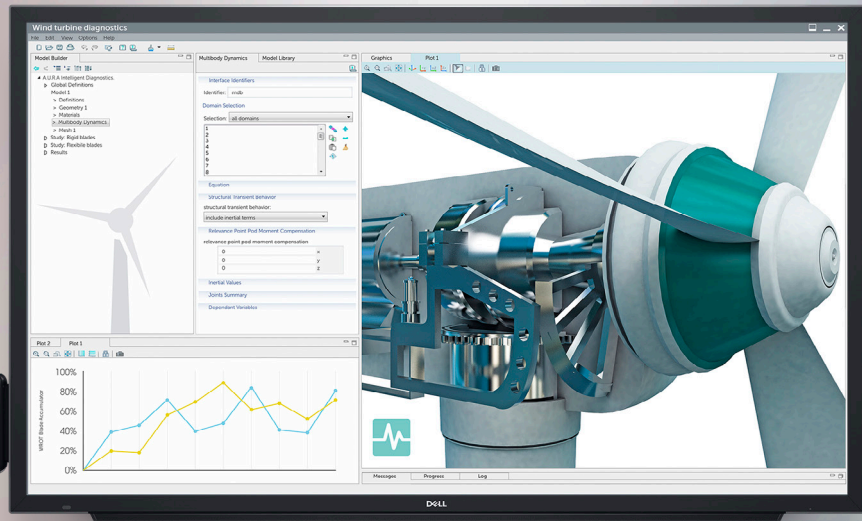




Built for captivating collaboration

DELL 55 4K INTERACTIVE TOUCH MONITOR – C5518QT



IMPRESSIVE VISUALS. IMPACTFUL PRESENTATIONS.

Ideal for conference room settings.



JUST THE RIGHT TOUCH

Smooth interaction and easy collaboration
with up to 20 touch points.



SIMPLE SETUP AND MANAGEMENT

Convenient connectivity with easy installation
and manageability.



HIGHLY RELIABLE

Dell monitors — the number 1 monitor brand worldwide
for four consecutive years.*

Built for captivating collaboration

DELL 55 4K INTERACTIVE TOUCH MONITOR – C5518QT

IMPRESSIVE VISUALS IMPACTFUL PRESENTATIONS

Impressive size and outstanding visual clarity ideal for conference room settings.

- **Exceptional viewing:** Brilliant 4K resolution keeps audiences captivated, and consistent colors across a wide viewing angle let everyone see clear text and crisp, vivid visuals.
- **Optimal performance:** Optimized fonts and sharp visuals with everyday programs like Microsoft PowerPoint, Word and Excel.
- **Consistent clarity:** Anti-glare and anti-smudge coatings reduce distracting reflections and fingerprints.
- **Great for groups:** The impressive 55-inch touch screen is ideal for conference room settings of up to 8 people.

JUST THE RIGHT TOUCH

InGlass™ Touch technology allows for natural writing and seamless group collaboration.

- **Constructive collaboration:** Group collaboration is intuitive and seamless thanks to innovative InGlass™ technology, allowing simultaneous screen interaction via touch or styluses with up to 20 touch points.
- **Smooth interaction:** Two styluses (included) let you write or draw naturally in real time directly on the screen without any lagging, while the remote (included) provides added functionality.
- **User-friendly functionality:** Pen and finger differentiation makes it easy to switch between touch and pen-based interaction, and touch functionality is supported on virtually all industry-standard software.
- **Interactive software (included):** Presenters can share their screens with the C5518QT while other users can take screen shots, make notes, and save content on their own device, thanks to industry-leading DisplayNote software for classroom and meeting room collaboration.

SIMPLE SETUP AND MANAGEMENT

Designed for quick and easy setup, plus convenient connectivity and manageability.

- **Convenient connectivity:** A variety of ports — including HDMI, VGA, DisplayPort and USB — makes it easy to connect to most IT devices.
- **OptiPlex compatibility:** The C5518QT features a unique design that's compatible with the optional Dell OptiPlex Micro, which integrates seamlessly into the back panel without the need of a separate power cord.
- **Connect wirelessly:** The optional Dell Wireless Module | WR517 enables secure, reliable wireless activity.
- **Easy manageability:** The Dell Display Manager lets users easily organize screen layouts. RS232 and RJ45 interfaces allow you to manage the display remotely.

SUPERB RELIABILITY

Comes with Dell's high reliability promise.

- From the #1 monitor brand worldwide for four consecutive years.*
- Minimize downtime with Dell's Advanced Exchange Service.¹

For more information
visit Dell.com/monitors



Features & Technical Specifications

Display

Model number	C5518QT
Viewable image size (diagonal)	139.7 cm (54.64 inch)
Panel technology	In-Plane Switching type
Maximum resolution	3840 x 2160 at 60 Hz
Aspect ratio	16:9
Pixel pitch	0.315 mm x 0.315 mm
Brightness (typical)	350 cd/m ²
Color gamut (typical)	72% NTSC (CIE 1931)
Color depth	1.07 billion colors
Contrast ratio (typical)	1200:1 (typical)
Viewing angle (typical) (vertical/horizontal)	178°/178°
Response time (typical)	8 ms, gray to gray
Backlight	White LED edgelight system
Dell Display Manager compatibility	Yes with Dell Easy Arrange

Connectivity

Connectors	3 x HDMI 2.0, 1 x DisplayPort 1.2, 1 x VGA, 1 x audio input, 1 x audio line-out, 3 x USB 3.0 upstream, 3 x USB 3.0 downstream, 1 x USB dedicated charging port
Remote asset management	1 x RJ45, 1 x RS232 input (D-Sub 9 pins)

Touch

Touch features	Up to 20 points with fingers; up to four points with stylus; InGlass™ touch technology
Cover glass	4 mm heat tempered glass, 9H hardness, AG, AS, 5% haze
Supported OS	Windows, Chrome, Android, other Linux based OS, MacOS

Design features

Security	Security lock slot (security lock not included)
Speakers	Integrated speakers (10W x 2)
VESA mounting support	300 mm x 300 mm
Bezel color	Black/Silver trim
Capacitive Touch OSD Controls	On-screen touch OSD

Power

AC input voltage/frequency/current	100 VAC to 240 VAC/50 Hz or 60 Hz + 3 Hz/4.5A (Max.)
Power consumption (typical)	105W
Duty cycle	12/7

Dimensions

Height	784.5 mm (30.88 in)
Width	1298.6 mm (51.12 in)
Depth	90.6 mm (3.56 in)

Weight

Weight (panel only)	53 kg (116.84 lb)
Shipping weight	66 kg (145.51 lb)

Standard service plan

3 Years Advanced Exchange Service¹ & Limited Hardware Warranty²

Environmental compliance

China Energy Label, CEL, WEEE, ErP (EuP)Standards, Korea E-Standby, Arsenic-Free glass and Mercury-Free for Panel only

What's in the box?

Components

- Monitor
- 1 x Remote control
- 3 x Wire saddle
- 2 x Styluses with 2 mm pen tips
- 1 x Stylus holder
- 1 x remote holder

Software:

- DisplayNote™ license key to support 4 connecting devices
- FlatFrog™ Whiteboard software

Cables

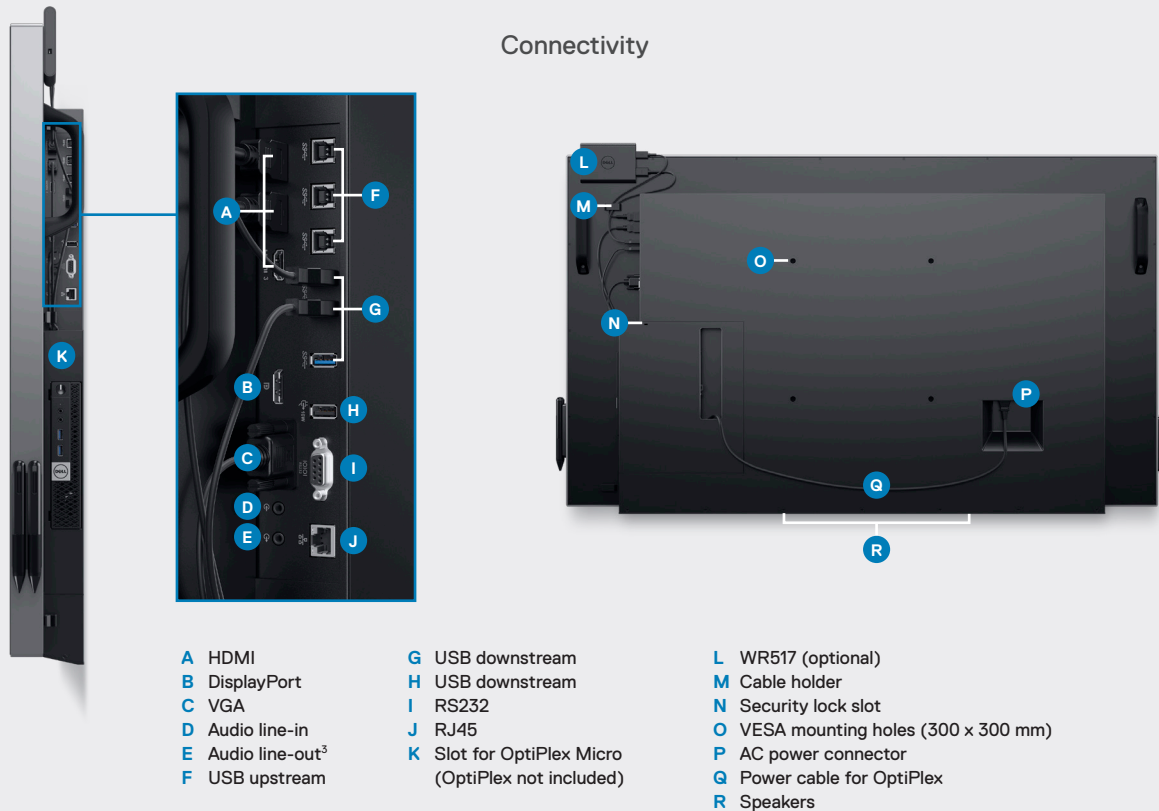
- 1 x Power (varies by countries)
- 1 x Power for OptiPlex
- 1 x DP - DP
- 1 x HDMI-HDMI
- 1 x VGA
- 1 x USB upstream (enables the USB ports on the monitor)

Documentation

- Quick Setup Guide
- Drivers and documentation media
- Safety and regulatory information

Adjustability and connectivity

DELL 55 4K INTERACTIVE TOUCH MONITOR – C5518QT



* Dell monitors are #1 worldwide for 4 consecutive years (2013 to 2016)! Source: IDC Worldwide PC Monitor Tracker (4Q16).

1 Advanced Exchange Service: Replacement part/unit dispatched, if needed, following completion of phone/online diagnosis. Fee charged for failure to return defective unit. Availability varies. Other conditions apply.

2 For a copy of the Limited Hardware Warranty, write Dell USA LP, Attn: Warranties, One Dell Way, Round Rock, TX 78682 or see Dell.com/warranty.

3 The audio line-out port does not support headphones.