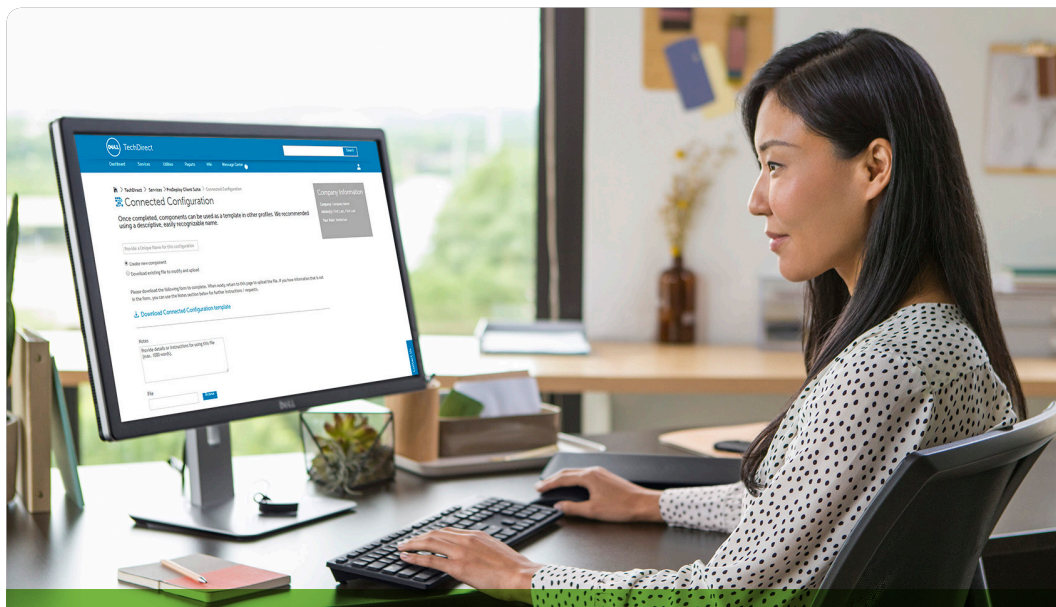




# Relinquish the tedium, not the control.



Dell ProDeploy Plus  
can save up to  
**56%**<sup>1</sup>  
of deployment time.

## ProDeploy Plus for Client Systems

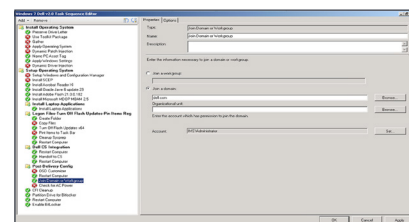
ProDeploy Plus is a comprehensive service providing seamless deployment of new technology. You get a single point of contact for project management including up-front planning, configuration, data migration and knowledge transfer. You will even be able to use system management software<sup>3</sup> such as Microsoft SCCM or MDT to control configuration of new systems. Once we complete the installation, we enable you to perform a data sanitization<sup>4</sup> on legacy systems to prevent data excursions.

### TechDirect puts full control in your hands and real-time status updates at your fingertips.

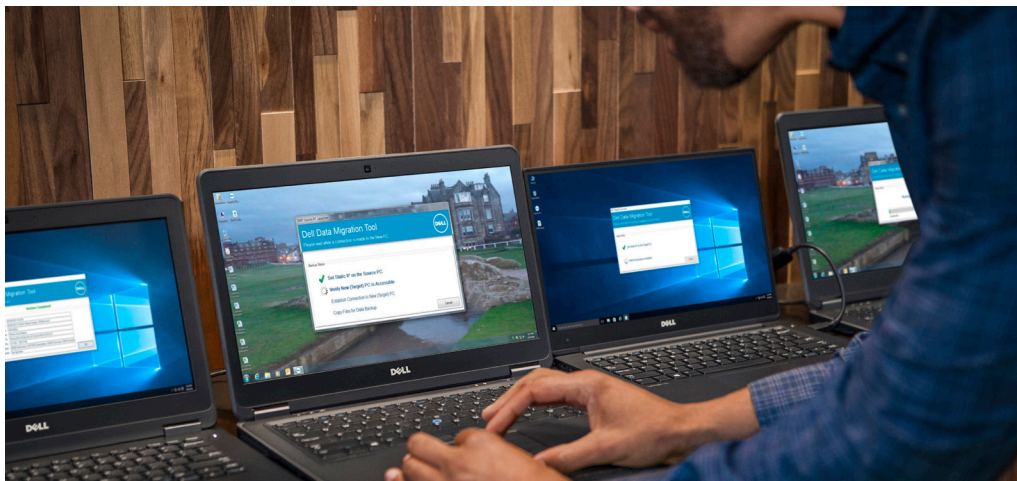
From the comfort of your office and with the click of a mouse, you will direct every task required to get new PCs from our factory to your employees' desks, up and running. You can even check project status whenever you want from wherever you are. With TechDirect you can execute faster and with less risk for mistakes, thereby making the entire engagement more efficient.

Are you using system management software<sup>3</sup>? If so, take advantage of Dell Connected Configuration to get a distribution point set up in our factory where you can configure your BIOS and image, and even complete domain join for each individual employee. If you are not using system management software<sup>4</sup>, download ImageAssist to create a single, cross platform image that we will dynamically update with the latest drivers as they are released.

Either way, configuration tasks are saved in TechDirect and automated in the factory which improves consistency and reduces the number of tasks and amount of time that must be spent onsite. We can even schedule installations after hours or on weekends. All of which minimizes employee down time.



Execute domain join through Connected Configuration or let our technician perform domain join onsite as part of the installation.



Peer-to-peer data transfer is faster, more reliable and more secure because passwords do not need to be shared with technicians. Or we can adapt to your standard process for data migration.

Our best practices ensure a reliable deployment which helps reduce post-deployment spikes in help desk calls. But to make sure your help desk is not impacted, we also provide 30-day post-deployment support. All of which saves your IT staff time and improves employee satisfaction.



### Experts

- Deployment engineer develops implementation plan
- Single point of contact for project management
- Training credits help your IT staff and end-users keep skills up-to-date.
- Technology Service Manager engagement<sup>2</sup>



### Insights

- Project documentation with knowledge transfer
- Factory distribution point for imaging and configuration of system management software<sup>3</sup> such as SCCM or MDT
- Imaging prior to shipping, WIM, Ghost, ISO, or ImageAssist



### Ease

- TechDirect self service portal for configuration and status updates
- 24x7 onsite installation plus data and settings migration
- 30-day post-deployment configuration assistance
- Secure data sanitization for legacy system\*

Trust Dell EMC and our partner experts to lead all aspects of deployments including planning, configuration, installation, data migration and knowledge transfer.

### ProDeploy Client Suite includes:

**ProDeploy Plus** provides every task required to get new PCs from factory to desk, up and running. You will also get 30-day post-deployment support, 24x7 installation, data migration as well as training credits which can be used to help your IT staff keep their skills up-to-date and adopt new technology quickly.

**ProDeploy** liberates your IT staff from time consuming deployment tasks. New PCs are configured prior to delivery and onsite installation is done during or after hours.

**Basic Deployment** accelerates PC deployment by reducing the configuration tasks that otherwise would be performed onsite.

For more information about **ProDeploy Plus**, please contact your Dell EMC representative.

\*For more information, please see the [Dell Media Sanitization Statement](#). Dell makes no recommendations regarding the customer's security needs or representations regarding the effectiveness of one method of data removal over another. It is the customer's responsibility to protect any confidential or sensitive information contained on its hard drives recovered by Dell EMC.

<sup>1</sup>Based on IDC White Paper commissioned by Dell, "Business Value of Optimized Device Deployment", July 2018. Results derived from a survey of 500 organizations worldwide. Savings calculated reflect costs associated with IT staff time for deployment-related activities and do not include the list price of ProDeploy Plus. Cost savings in U.S. Dollars. Actual results will vary. [Full report](#).

<sup>2</sup>Available for ProSupport Plus customers who qualify for a TSM.

<sup>3</sup>Your engagement manager can let you know which system management software titles apply.

