



# Eliminate risk during migrations and updates of your SAP applications.

ZeroIMPACT Migration Services for SAP® applications from Dell



Ensure high availability of your mission-critical systems during migrations.

## Achieve peak performance and get the latest hardware/software functionality

You rely on your SAP enterprise applications to keep your business running smoothly. To stay competitive, it's important to get the latest features and best performance from your SAP applications – whether you use them for enterprise resource planning, customer relationship management, data gathering and analytics, or other business processes.

However, upgrading your SAP applications to the latest version or a more efficient platform can be risky. Many SAP applications are mission critical and require 24x7 availability but traditional upgrades and platform migrations often require prolonged downtime, which can cost hundreds of thousands, or even millions of dollars.<sup>1</sup>

You also need to ensure security, as well as gains in performance and management before moving ahead with a significant migration project.

## Use proven processes to reduce business disruption

Dell's ZeroIMPACT Migration Services for SAP applications start with an analysis of all applications, processes and users to make sure that necessary resources and applications will be available during the migration. We then help you:

- Identify all workflows, applications and hardware that might be impacted
- Schedule resource-intensive tasks during off-hours
- Ensure coexistence between existing and new environments to minimize disruptions and business impact

## Key benefits:

- Eliminates planned outages during migration to ensure continued end-user productivity
- Offers configurations for highly customized implementations
- Provides on-time, on-budget, error-free migration to maximize investment value of new platform
- Backed by business-critical support that provides expertise and practical experience
- Validates performance in new environment before migration using our test harness option

### Team up with Dell to ensure a successful migration

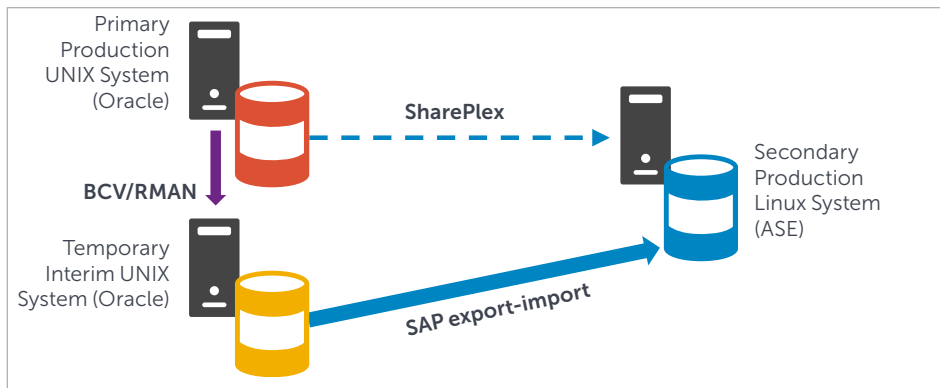
Our consultants work in close partnership with you to manage all aspects of your SAP system upgrades and migration — from planning and start-up to functional development activities to go-live and support. We also keep you informed with real time progress reports and project schedules.

Using a proven methodology built on four key pillars, our services help you minimize risk and maximize benefits:

- Preparation – Use an extensive pre-migration assessment to analyze the current state and get detailed information on what should and shouldn't be moved
- Migration – Reduce downtime, user disruptions, errors and risk with our simplified migration SharePlex™ technology
- Coexistence – Maintain business productivity using the existing system to transact, move, store, process and analyze data during migration
- Management – Monitor, report and recover across your new environment

### Minimize downtime with our SharePlex technology

Using our SharePlex technology, we can help you minimize downtime and maintain high availability without impacting the source system. SharePlex deploys a streaming process outside the database, minimizing the impact on database performance. It also uses a unique log-based replication technology to ensure data accuracy by providing data integrity in-flight without affecting or changing the live source application. SharePlex also supports replication of all current SAP data types. Whether upgrading a legacy platform, migrating to a new platform or moving to the cloud, SharePlex enables you to affordably evolve and modernize your SAP infrastructure.



### Foglight™ technology provides performance assurance

It's important to ensure that your SAP applications will perform as anticipated before beginning a major migration project to a new environment. That's why we offer you the option to export a portion of your existing SAP data to the Dell Cloud and run the workload in both your existing and planned environments. Using our Foglight technology, you can then compare performances of both environments, obtaining technical validation for your planned environment in just four weeks. With this try-before-you-buy option, you can be confident of the results before engaging in your SAP migration project.

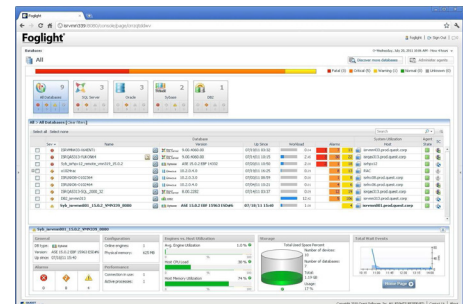
For more information about any of our service offerings, please visit [Dell.com/SAP](http://Dell.com/SAP) or contact your Dell representative.

### ZeroIMPACT Migration for SAP applications at a glance:

- Platform agnostic
  - Provides cross-platform replication: Solaris, AIX, HP-UX, Linux or Windows
  - Replicates data from different versions and edition of Oracle: 9i, 10g, 11g and 12c; Enterprise, Standard, Exadata and RAC
  - Supports Oracle to Oracle and Oracle to Sybase ASE migrations
- Minimum impact
  - Replication can begin instantly upon installation on live system
  - Limited transaction time, lag time and downtime
- Supports replication of various SAP data types: LONG columns, LOBS, etc.
- Validated by SAPP ICC SAP Integration Assessment Lab

### SharePlex system requirements:

- Memory
  - 1 GB RAM
  - 256 MB or greater per processor
- Additional requirements
  - System file descriptors setting of 1024 or higher recommended
  - Existing Oracle database must employ at least the minimal level of supplemental logging enabled



Scan or click this code to learn how Dell Services can help your organization.

1. DataXStream, "Avoiding the Costs of Downtime," <http://www.dataxstream.com/sap-virtualization-solutions/disaster-recovery/costs-of-downtime/>  
 Product and service availability varies by country. To learn more, customers and Dell Channel Partners should contact their sales representative for more information. Specifications are correct at date of publication but are subject to availability or change without notice at any time. Dell and its affiliates cannot be responsible for errors or omissions in typography or photography. Dell's Terms and Conditions of Sales and Service apply and are available on request. Dell and the Dell logo are trademarks of Dell Inc. Other trademarks and trade names may be used in this document to refer to either the entities claiming the marks and names or their products. Dell disclaims proprietary interest in the marks and names of others. © 2014 Dell Inc. All rights reserved.  
 April 2014 | D218\_ZeroIMPACTMigration\_DS.indd | Rev. 1.3

