

Dell EMC PowerEdge rack servers help you build a modern infrastructure that minimizes IT challenges and drives business success. Choose from a complete portfolio of 1-2-and-4 socket rack servers to deliver high core density for your traditional applications, virtualization and cloud-native workloads. Enhanced memory speeds, faster NVMe storage options¹ and BIOS tuning allows you to match performance to your workload for ultimate efficiency.

PowerEdge Rack Servers	R940xa	R940	R840	R740xd	R740	R740xd2	R640	R540	R440	R7425	R7415	R6415	R340	R240	
Key attributes	Extreme acceleration	Powerful performance	Turbocharge data analytics	Scalable storage performance	Optimal application performance	Enterprise content server	Performance and density	Balanced and adaptable	Scale-out computing	Scale-up performance	Scale-up efficiency	High density compute	Accelerate business growth	Compute made simple	
Target workloads	GPU database acceleration and machine learning	In-memory databases	Data-intensive workloads, HFT and dense virtualization	SDS, service providers, and big data servers	VDI and cloud workloads	Media streaming, SDS, mail messaging	Dense scale-out data center computing and storage	Mail messaging and virtualization	HPC, web tech and scale-out infrastructure	HPC, memory-bound and SDS deployments	High-capacity SDS	Virtualization and scale-out SDS	ROBO productivity and data-intensive applications	Small business and service provider workloads	
Type of processor	4 Intel® Xeon® Scalable processors			2 Intel Xeon Scalable processors					2 AMD EPYC™ processors	1 AMD EPYC processor		1 Intel Xeon E-2100, Intel Core i3®, Intel Pentium®, or Intel Celeron® processor			
Memory (DDR4 DIMM slots & max)	48 (6TB)			24 (3TB)		16 (512GB)	24 (3TB)	16 (1TB)		32 (2TB)	16 (1TB)		4 (64GB)		
Disk drives up to:	32 x 2.5"	24 x 2.5"	26 x 2.5"	32 x 2.5" or 18 x 3.5"	16 x 2.5" or 8 x 3.5"	26 x 3.5" or 16 x 3.5" + 10 x 2.5" ²	12 x 2.5" or 4 x 3.5"	14 x 3.5"	10 x 2.5" or 4 x 3.5"	32 x 2.5" or 18 x 3.5"	24 x 2.5" or 14 x 3.5"	8 x 2.5" or 4 x 3.5"	8 x 2.5" or 4 x 3.5"	4 x 2.5" ² or 4 x 3.5"	
NVMe drives up to:	4	12	24		N/A		10	N/A	4	24		10	N/A		
Gen3 PCIe slots up to:	12	13	6	8		5	3	5	2	8	4	2			
Accelerator support up to:	4 x DW GPUs or 8 x FPGAs	N/A	2 x DW GPUs or 2 x FPGAs	3 x DW or 6 x SW GPUs or 4 x FPGAs		N/A	1 x FPGA	N/A							
Rack height (U)	4	3	2				1	2	1	2		1			
Integrated security:	TPM 1.2/2.0 optional, Digitally Signed Firmware, Chassis Intrusion Alert and Secure Boot being standard security on all racks. Integrated security features such as Silicon Root of Trust, System Lockdown and System Erase come standard on all racks.														



“Now our application provisioning is much faster with the stronger virtualization capabilities we’ve gotten from the advanced Dell EMC PowerEdge rack servers.”

- **Alejandro Liz, Project Coordinator, Pontificia Universidad Católica Madre y Maestra**



“Researchers can ask questions about their data they couldn’t before, with workloads accelerated by up to 1,000 percent by Dell EMC servers.”

- **Niall Gaffney, Director of Data Intensive Computing, Texas Advanced Computing Center**



“Our PowerEdge Servers are the bedrock of our data center, they run everything mission critical.”

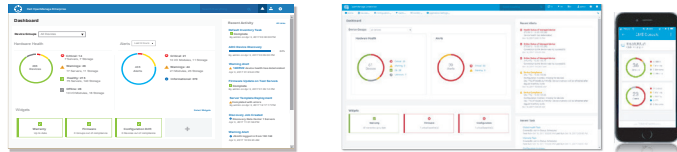
- **PJ Camm, Manager of IT, OTTO Motors**

Dell EMC Solutions

When you buy a Dell EMC server, you get more than just hardware. You get access to IT solutions end-to-end. Dell and EMC bring together industry-leading expertise into a common platform to help you transform your data center. Dell EMC can deliver PowerEdge technology at any level of integration – from a best-in-breed platform, to a pre-integrated fully turnkey hybrid cloud implementation or any step in-between. Combining the PowerEdge server infrastructure with Dell Services and Financial Solutions allows you to modernize your data center faster, more affordably and with less risk.

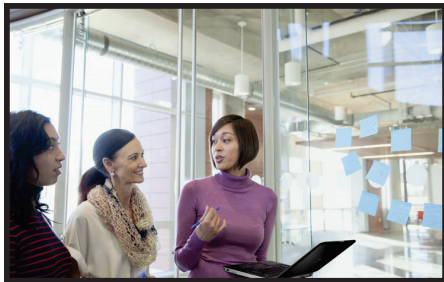


OpenManage Systems Management



Increase the productivity, reliability and cost effectiveness of your Dell EMC PowerEdge servers while making your IT operations more efficient as well. Designed for use by today's IT Professionals, the Dell EMC OpenManage Enterprise console simplifies, intelligently automates and unifies infrastructure management tasks. Though primarily designed to monitor, configure and update tower, rack and modular PowerEdge servers, OpenManage Enterprise also provides end-to-end infrastructure monitoring capabilities for Dell EMC storage and networking devices plus third-party hardware too. Add OpenManage Mobile to enable your IT Pros to receive and take action on both Dell EMC and third-party hardware events anytime, anywhere. OpenManage Integrations enables both hardware and software infrastructure management without leaving third party consoles such as VMware vCenter and Microsoft System Center.

Dell EMC Services



To fully implement a modern infrastructure, organizations require reliable, comprehensive IT services to drive IT transformations, accelerate adoption of new technologies and maximize productivity.

Architect: Get started with our IT Transformation Workshop to accelerate your transformation to becoming an agile business partner and broker of services to the business.

Implement: The ProDeploy Enterprise Suite helps you get more out of your new technology starting day one. Trust Dell EMC experts to lead deployments from basic hardware installations through planning, configuration and complex integrations.

Manage: The ProSupport Enterprise Suite ensures 24x7 access to senior ProSupport engineers along with automated proactive and predictive service enabled by SupportAssist. Our personalized service and preventative measures help you get ahead of problems before they happen.

Dell EMC Data Center Infrastructure

Dell EMC Data Center Infrastructure (DCI) simplifies and manages critical infrastructure in and around the data center serving the needs of your business. A complete portfolio of racks, power and cooling solutions lets you scale as your data center needs grow.



[Learn more](#) about
Dell EMC server solutions



[Contact](#)
a Dell EMC Expert



View more resources:



¹ Not all features are available on all platforms.

² 2.5" drives use hybrid carrier to fit in 3.5" drive bay. (For the R740xd2 - a hybrid configuration is available with up to 10 2.5" SSDs)
For a comprehensive list, visit dell.com/servers. Product availability may vary by region. Please contact your Dell representative for more information.
© 2018 Dell Inc. or its subsidiaries. All Rights Reserved. Dell, EMC and other trademarks are trademarks of Dell Inc. or its subsidiaries.
Other trademarks may be trademarks of their respective owners.