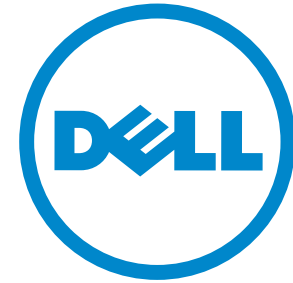




# Dell Wyse Xenith

The zero clients built for Citrix HDX.



Wyse



Your desktop just got easier. Much easier.  
Meet the Dell Wyse Xenith family, here:



# Meet Dell Wyse Xenith, built for Citrix HDX

## Your desktop just got easier

Delivering major advances in performance, simplicity and longevity, the Xenith range of next generation zero clients are yet again redefining the category Dell Wyse itself created.

**Performance** It's built for Citrix HDX. So users receive an instant-on desktop and enjoy a rich media experience that doesn't tax servers or networks.

**Simplicity** And it's easy too. With simple plug-n-play operation and auto-configuration.

**Longevity** Xenith takes care of everything it needs to stay up-to-date by adapting to network security and protocol advances.

**Flexibility** Tailor your zero clients to your performance, budget, and size requirements.



### Dell Wyse Xenith 2

With its extremely compact footprint Xenith 2 is the ideal companion device for Citrix XenDesktop and Citrix HDX technology.



### Dell Wyse Xenith Pro 2

It's all about security and performance, and Xenith Pro 2 is our fastest zero client for Citrix yet.



Start

Introduction

Features

Technical

Contact

Print

# Features Dell Wyse Xenith family

## Your desktop just got easier. Much easier.

They might be zero clients, but the Xenith family lacks nothing in the cool-features department and arrives ready to go, straight out of the box.

Performance



Xenith 2 connectivity



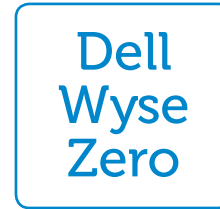
Xenith Pro 2 connectivity



Green



Dell Wyse Zero



Take a tour of  
the Xenith family



Start

Introduction

Features

Technical

Contact

Print

# Performance

## Why let your desktop hold you back?

We believe zero clients should give you a no-limits experience. It's this vision and thinking that gets a Dell Wyse Xenith zero client from power-on to productive in just six seconds.

**Xenith 2's** extremely compact and efficient design sports gigabit LAN and wireless-b/g/n, so it's ready for serious tasks whether you're wired in or not.

For those power users needing even more performance, connectivity and power, there's the new dual-core **Xenith Pro 2**. It takes the Dell Wyse Zero engine to entirely new levels of performance, connectivity and best of all, productivity. Proving that zero limitations means just that.

ARMADA  
v7

### Armada processor

Xenith 2 features an ARMADA™ 510 v7 1.0 GHz SoC and is ready to work in seconds.



### AMD G-Series APU

The advanced technology contained in this dual-core Accelerated Processing Unit (APU) from AMD enables exceptional graphics and display performance.

- Dual-core technology
- Integrated Radeon graphics processing



Continue tour



Start

Introduction

Features

Technical

Contact

Print

# Absolutely zero That's Dell Wyse Xenith

## Welcome to the Dell Wyse Xenith family

Establishing a new price/performance standard for zero clients for Citrix, the new Xenith 2 and Xenith Pro 2 provide an exceptional user experience at a highly affordable price for Citrix XenDesktop and XenApp published desktops. With zero attack surface, ultra-secure Xenith family zero clients offer network-borne viruses and malware zero target for attacks.

Xenith family zero clients deliver outstanding performance with their Dell Wyse Zero architecture, and a built-in media processor delivers smooth multimedia, bi-directional audio and Flash playback.

### Ultimate performance.

Dual-core processing power on the Xenith Pro 2, optimized for Citrix HDX and Citrix XenDesktop. Hardware accelerated monitor rotation support (L-shaped dual monitors).

### Super secure.

No attack surface for complete immunity to viruses and malware.

### Instant-on.

Powers on in just 6 seconds; goes from standby to connected in 2 seconds.

### Zero management.

Plug-n-play operation with auto-discovery and zero configuration, and hands-off management.

### Well-connected.

Connect to LAN, WAN and Wi-Fi network; adapts to the latest network security and protocols.

### Green.

Xenith 2 draws less than 7 watts of power in full operation and Xenith Pro 2 draws less than 14 Watts of power in full operation.

Continue tour



Start

Introduction

Features

Technical

Contact

Print

# Dell Wyse Zero engine It's all about Zero

## Technology powering a new world of cloud connected smart devices

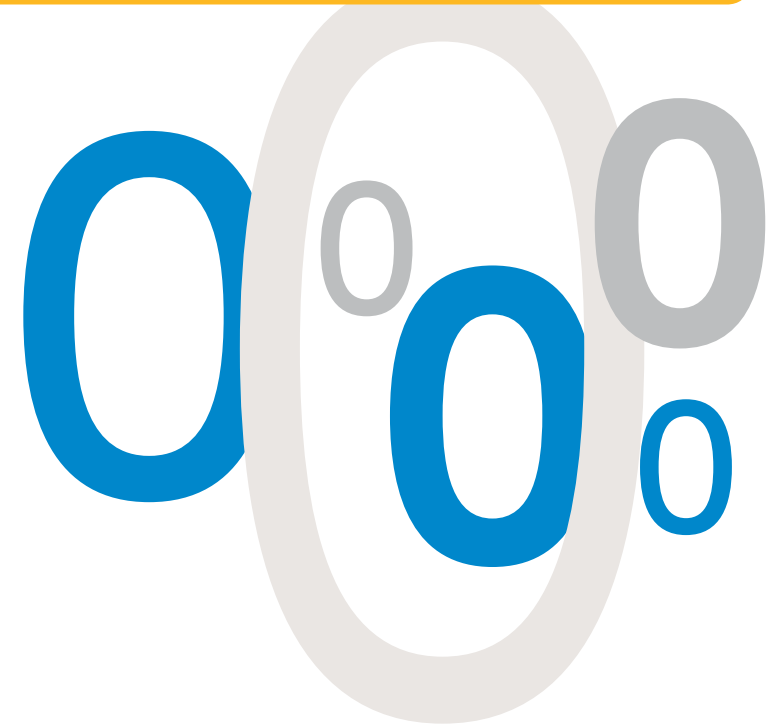
### Zero engine is software technology that simplifies the development of cloud-connected smart devices.

It's already in use in millions of devices, including thin clients, handheld smart devices and zero clients. And connects users to cloud computing services and virtual desktops with an efficient communications and protocol technology.

For example, Dell Wyse PocketCloud uses Zero functionality to expand the iPhone and iPad's browsing capability to include Flash support, by intelligently using its cloud resources.

Zero engine is a mature, tested and purpose-built portable software technology for next generation zero clients and smart devices connecting to the Internet and the cloud.

Its tiny footprint – less than the size of a digital photograph addresses the limitations with current embedded options, which can be up to 8GB or more in size – and requires just six seconds to boot devices into productive desktops. And since Zero engine is original technology – with no published API (like Windows or Linux-based embedded products) – it's inherently virus-free and secure.



Continue tour



Start

Introduction

Features

Technical

Contact

Print

# Dell Wyse Xenith Dedicated software

## Citrix Receiver 3.x for Xenith

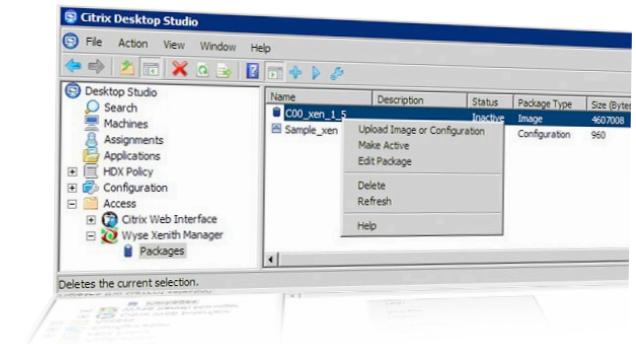
Designed by Dell Wyse in collaboration with Citrix specifically for these Dell Wyse zero clients, Dell Wyse Xenith 2 and Xenith Pro 2 provide:

- HDX Multi-Stream
- HDX MediaStream
- HDX 3D & HDX 3D Pro
- HDX RealTime
- HDX Plug-n-Play
- Session reliability
- Progressive display
- Bandwidth measurements
- Local text echo
- CSG & CAG support (in CSG mode)
- Desktop restart
- Citrix logon experience

## Dell Wyse Xenith Manager

Designed in collaboration with Citrix, Xenith Manager, now part of Citrix XenDesktop 5 and later, delivers tighter integration and vital flexibility and device longevity benefits. And, as it's provided on the XenDesktop 5 install media – XenDesktop and Xenith™ deliver a fully integrated and unprecedented combination of simplicity, performance and security for office-based workers, while ensuring a high-definition user experience.

Integrated intelligence works with XenDesktop to take care of discovery, initial configuration and updates through the network – as well as giving you control – when and if you need it. Xenith is the only end point integrated into XenDesktop management console (Desktop Studio).



[Continue tour](#)



Start

Introduction

Features

Technical

Contact

Print

# Dell Wyse Xenith 2 or Xenith Pro 2?

## Dell Wyse Xenith 2

With its extremely compact footprint Xenith 2 is the ideal companion device for Citrix XenDesktop utilizing Citrix HDX technology. Choose Xenith 2 when you need a compact zero client for:

Fast plug-n-play deployment.

Fast boot-up and production readiness.

Auto-configuration and zero management.

High density user workstations.

Highly scalable deployments.

Risk free data access in sensitive environments.

Multiple-user hot-desking.

Multimedia and high definition graphics.

Users needing dual digital display –

Minimal energy use and reduced carbon footprint.

Small size and high affordability.

## Dell Wyse Xenith Pro 2

Builds on the success of its little brother and takes Citrix zero client performance to a new level – with additional dual-core processing power, much higher performance and even higher levels of connectivity. Choose Xenith Pro 2 when you need a zero client for:

More than double the Citrix HDX performance – for truly dazzling multimedia, HD Flash content and unified communications.

Users needing dual digital display support and L-shaped configurations.

Simply, those seeking the best Citrix HDX user experience.

**We'll help you choose which Xenith zero client will suit you best.**

Continue tour



Start

Introduction

Features

Technical

Contact

Print



# Connectivity Dell Wyse Xenith 2



## Rear of device

Mount Xenith 2 to the rear of a monitor with optional mounting kit (uses free VESA mounts).



Kensington lock slot

DVI-I Video output for one or two displays (dual displays require optional splitter cable)

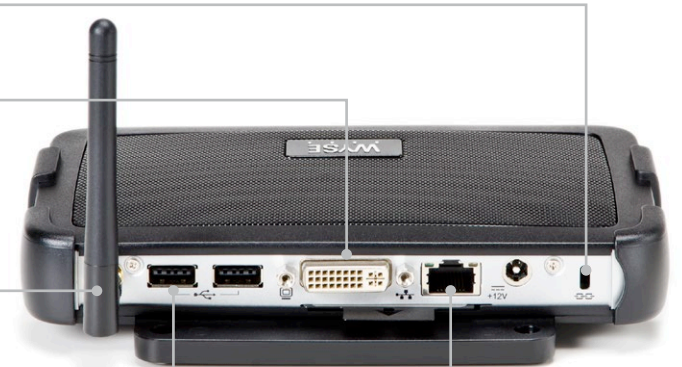
WiFi antenna connector for optional 802.11 b/g/n

Four available external USB 2.0 ports (2 front; 2 back)

10/100/1000 Base-T ethernet port

Audio out: 1/8-inch mini jack, 16 bit stereo

Audio in: 1/8-inch mini jack, 8 bit stereo microphone



Continue tour



Start

Introduction

Features

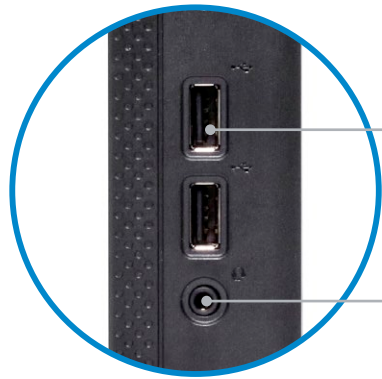
Technical

Contact

Print

# Connectivity Dell Wyse Xenith Pro 2

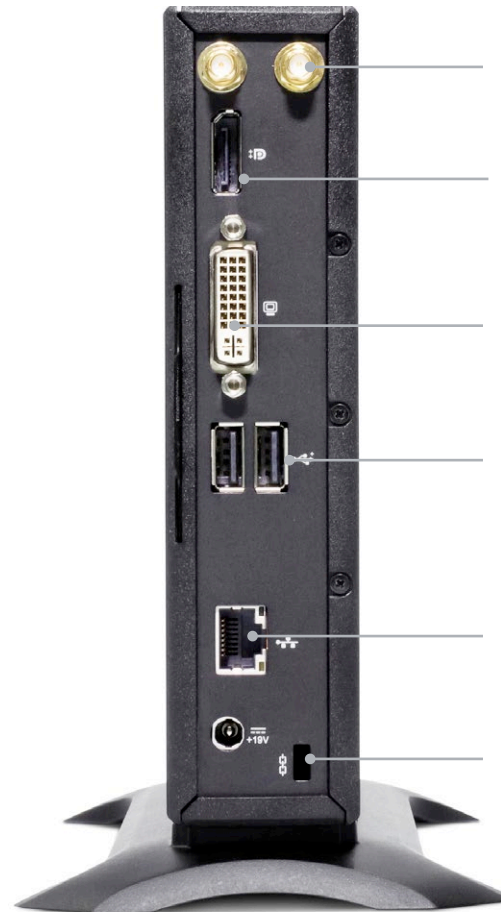
## Standard configuration.



2 USB 2.0 ports

Composite digital audio

Front panel connectivity



Dual Band 802.11 a/b/g/n Wireless (factory option)

DisplayPort

DVI-I port

2 USB 2.0 ports

RJ45 or SFP Module

Kensington lock slot



Some features require local OS support and may not be available with all OSs.



Start

Introduction

Features

Technical

Contact

Print



# Green computing without compromise



## That's Dell Wyse EarthSmart™ computing

Through our EarthSmart Computing initiative we are committed to helping organizations implement a greener computing strategy – one that delivers a more efficient and productive computing experience for your users with a positive effect on energy wastage, heat and carbon emissions.

### Green power

The Dell Wyse Xenith family packs a considerable punch with its green credentials. From reduced manufacturing impact and end-of-life recycling waste, to as little as 7 watts energy consumption, deploying Xenith zero clients will enable your organization to achieve a lighter carbon footprint.



## More information

Download carbon calculators, fact sheets and white papers from here:  
[www.wyse.com/green](http://www.wyse.com/green)

Continue tour



Start

Introduction

Features

Technical

Contact

Print

# Technical Dell Wyse Xenith family

Xenith 2 and Xenith Pro 2 feature a wealth of features. Check them all out here.  
If you have any further questions about your deployment, simply contact your Dell Wyse representative.

**Want to learn more? Simply click the relevant icon.**

Xenith 2 specifications



Xenith Pro 2 specifications



Start

Models

Features

Technical

Contact

Print

# Hardware specifications Dell Wyse Xenith 2

Processors	Marvell® ARMADA™ PXA 510 v7 1.0 GHz system-on-chip (SoC)
Memory	OMB Flash / 1GB RAM
I/O peripheral support	One DVI-I port, DVI to VGA (DB-15) adapter included Dual-video support with optional DVI-I to DVI-D plus VGA-monitor splitter cable (sold separately) Four USB 2.0 ports (2 front, 2 back) One mic in / one line out
Included	USB keyboard with Windows keys (104 keys) and optical mouse
Networking / comm	10/100/1000 Base-T Gigabit Ethernet Internal 802.11 b/g/n wireless
Display	VESA monitor support with Display Data Control (DDC) for automatic setting of resolution and refresh rate Dual monitor supported Single: 1920x1200@60Hz, color depth: 8, 15, 16, 24 or 32bpp Two independent full resolution frame buffers Dual: 1920 x 1200 dual monitor max supported Hardware accelerated monitor rotation support (L-shaped dual monitors)
Audio	Output: 1/8-inch mini jack, full 16 bit stereo, 48KHz sample rate Input: 1/8-inch mini jack, 8 bit stereo microphone
Physical characteristics	Height: 1.38 inches (34mm) Width: 6.94 inches (177mm) Depth: 4.75 inches (121mm)

Shipping weight	6 lbs. (2.7kg)
Mountings	Stand for horizontal use (Part #920331-01L) and VESA wall mounting included
Device security	Built-in Kensington security slot (cable sold separately)
Power	Worldwide auto-sensing 100-240 VAC, 50/60 Hz. Energy Star® V.5.0 compliant power supply. Average power usage with device connected to 1 keyboard with 1 PS/2 mouse and 1 monitor: Under 7 Watts
Temperature range	Horizontal and vertical operating positions: 50° to 104° F (10° to 40° C)
Humidity	20% to 80%
Certifications	German EKI-ITB 2000, ISO 9241-3/-8 cULus 60950, TÜV-GS, EN 60950 FCC Class B, CE, VCCI, C-Tick WEEE, RoHS compliant
Warranty	Three-year hardware warranty Visit our web site for WyseChoice extensions and upgrades



Start

Introduction

Features

Technical

Contact

Print

# Hardware specifications Dell Wyse Xenith Pro 2

Processor	AMD G-Series Dual core T48E 1.4GHz with AMD Radeon™ HD 6250 Graphics
Memory	2GB Flash / 2GB DDR3 RAM
I/O peripheral support	One DisplayPort. (Optional DisplayPort to DVI-I adapter available) One DVI-I port. DVI to VGA (DB-15) adapter included Four External USB 2.0 ports (2 front; 2 back) Serial and Parallel connectivity supported through USB 2.0 adapters Enhanced USB Keyboard with Windows Keys (104 keys) and PS/2 mouse port. PS/2 Optical mouse included.
Networking	10/100/1000 Base-T Gigabit Ethernet RJ45 or SFP Module <b>Factory options:</b> Single and Dual Band 802.11 a/b/g/n integrated wireless with external dual antennas SFP Module support for Fiber NIC network connectivity
Display	VESA monitor support with Display Data Control (DDC) for automatic setting of resolution and refresh rate DisplayPort: 2560x1600@32bpp DVI-I: 1920x1200@32bpp Dual display: 1920x1200@32bpp
Audio	Composite Audio Jack: 1/8-inch mini, 16-bit stereo. Internal Mono speaker.
Physical characteristics	Height: 6.7 inches (170mm) Width: 1.6 inches (40mm) Depth: 7.3 inches (185mm)
Weight	2.05 lbs. / 0.93 kg

Mountings	Vertical feet standard. Horizontal feet optional. Optional Dell Ergotron mounting bracket.
Device Security	Built-in Kensington security slot (cable sold separately)
Power	Worldwide auto-sensing 100–240 VAC, 50/60 Hz 65W, 19V DC. Energy Star V.5.0 Phase V external and EuP compliant power adapter Average power usage with device connected to 1 keyboard with 1 PS/2 mouse and 1 monitor: Under 9 Watts
Temperature Range	Operating: 32° to 104° F (10° to 40° C), horizontal and vertical positions. Storage: 14° to 140° F (-10° to 60° C)
Humidity	20% to 80% condensing 10% to 95% non-condensing
Safety Certifications	Ergonomics: German EKI-ITB 2000, ISO 9241-3/-8 Safety: cULus 60950, TÜV-GS, EN 60950 RF Interference: FCC Class B, CE, VCCI, C-Tick Environmental: WEEE, RoHS Compliant.
Warranty	Three-year limited hardware warranty. Optional WyseChoice extensions and upgrades at <a href="http://www.wyse.com/warranties">www.wyse.com/warranties</a> .



Start

Introduction

Features

Technical

Contact

Print



# Contact Dell Wyse.

## Dell Wyse

3471 North First Street,  
San Jose,  
CA 95134-1801

## Visit our website at:

<http://www.dellwyse.com> or  
send email to: [sales@wyse.com](mailto:sales@wyse.com)

## Dell Wyse Sales

1-800-438-9973

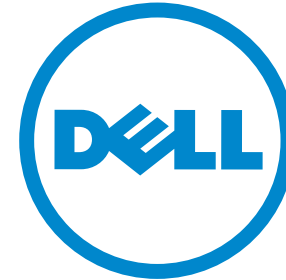
## International customers please dial:

00 1 408 473 1200

## Dell Wyse Support Portal

Dell Wyse Support Portal provides a fast and accurate way to communicate interactively with Dell Wyse Customer Support, and helps us respond to your requests more quickly.

<http://support.wyse.com/selfservice.html>



Wyse

Dell Wyse offers cloud client computing sales, service and support expertise around the globe. Click for contact details.

## About Dell

Dell Inc. (NASDAQ: DELL) listens to customers and delivers innovative technology and services that give them the power to do more. For more information, visit [www.dell.com](http://www.dell.com)

©2013 The Dell Wyse logo and references are trademarks of Dell Wyse. Other product names mentioned herein are for identification purposes only and may be trademarks and/or registered trademarks of their respective companies. All specifications are subject to change without notice. Whilst we make every effort to ensure the accuracy of the details, specifications, models, images and benefits featured in this datasheet, we cannot be held responsible for any errors and/or omissions. If you have any queries regarding Dell Wyse products please contact your authorized regional Dell Wyse Partner. Some features require support by server operating system and protocol.  
Design draft 210513.

Start

Models

Features

Technical

Contact

Print



# Dell Wyse Xenith family

Your desktop just got easier. Much easier.

## The zero clients built for Citrix® HDX

Delivering major advances in performance, simplicity and longevity, the Dell Wyse Xenith family of next generation zero clients – **Xenith 2** and **Xenith Pro 2** – are redefining the ‘zero’ category Dell Wyse itself created.

## Absolutely Zero. That’s Dell Wyse Xenith

Which means – **Zero delays:** with a sub-9 second startup time.  
**Zero management:** Pure plug-and-play auto set-up that does everything including ongoing updates.

### Zero security issues:

No published APIs means immunity from viruses or malware.

### Zero energy use (almost):

Average under 9 watts of power.

### Zero compromise user experience:

Built for Citrix – Xenith 2 and Xenith Pro 2 live-and-breathe Citrix XenDesktop and Citrix HDX, now with support for HDX 3D & HDX 3D Pro.

## Dedicated software and management

Dell Wyse Xenith Manager, now part of XenDesktop 5 and later, delivers tighter integration, vital flexibility and device longevity benefits. And, as it’s provided on the Citrix XenDesktop install

media, XenDesktop and Xenith deliver a fully integrated and unprecedented combination of simplicity, performance and security, while ensuring a high-definition user experience. Xenith is the only family of end points integrated into the XenDesktop 5 management console (Desktop Studio).

## Green

From reduced manufacturing impact and end-of-life recycling waste, to as little as 7 watts energy consumption in operation, deploying Xenith zero clients will enable your organization to achieve a lighter carbon footprint.

## Dell Wyse Xenith 2

### Overview

With its compact footprint Xenith 2 is the ideal companion device for Citrix XenDesktop and Citrix HDX technology – ‘straight-out-of-the-box’.

### Superb performance and user experience

From the start superb performance is the promise behind every Xenith 2. It’s ready to plug-and-play, with its ARM SoC processor and advanced best performance-per-watt hardware accelerator, delivering productive desktops in under six seconds.



Xenith 2 users benefit from high performance connectivity that includes support for two high resolution displays, four USB ports and two PS/2 ports for a host of peripherals, fast gigabit Ethernet and b/g/n WiFi. And all this can be tucked away securely out-of-sight with included VESA mounting for fitting behind monitors.

While Dell Wyse Xenith Manager, included on Xenith Manager 5 and later, means looking after them is as easy as using them.

## Dell Wyse Xenith Pro 2

### Overview

Xenith Pro 2 is the high-performance, high-connectivity zero client for Xen Desktop and HDX.

### Ultimate performance boost

Xenith Pro 2 offers more than double the processing power for HDX users, with outstanding playback and display of multimedia and Flash.

And its AMD G-Series dual-core APU does it all while lowering power consumption – while boosting performance.

Just like Xenith 2, Xenith Pro 2 frees up desk space with optional mounting brackets for fitting behind monitors, under desks and to walls.





<b>Processors</b>	Marvell® ARMADA™ PXA 510 v7 1.0 GHz system-on-chip (SoC)	AMD G-Series Dual core T48E 1.4GHz
<b>Memory</b>	0MB Flash / 1GB RAM	2GB Flash / 2GB DDR3 RAM
<b>I/O peripheral support</b>	One DVI-I port, DVI to VGA (DB-15) adapter included Dual-video support with optional DVI-I to DVI-D plus VGA-monitor splitter cable (sold separately) Four USB 2.0 ports (2 front, 2 back) One mic In / One line Out	One DisplayPort. (Optional DisplayPort to DVI-I adapter available) One DVI-I port. DVI to VGA (DB-15) adapter included Four External USB 2.0 ports (2 front; 2 back) Serial and Parallel connectivity supported through USB 2.0 adapters
<b>Included</b>	Enhanced PS/2 keyboard with Windows keys (104 keys) and PS/2 optical mouse	Enhanced PS/2 keyboard with Windows keys (104 keys) and PS/2 optical mouse
<b>Networking / Comm</b>	10/100/1000 Base-T Gigabit Ethernet Internal 802.11 b/g/n wireless	10/100/1000 Base-T Gigabit Ethernet Internal 802.11 a/b/g/n wireless, external dual antennas
<b>Display</b>	VESA monitor support with Display Data Control (DDC) for automatic setting of resolution and refresh rate Dual monitor supported Single: 1920x1200@60Hz, color depth: 8, 15, 16, 24 or 32bpp Two independent full resolution frame buffers Dual: 1920 x 1200 dual monitor max supported Hardware accelerated monitor rotation support (L-shaped dual monitors)	VESA monitor support with Display Data Control (DDC) for automatic setting of resolution and refresh rate Dual monitor supported Single: 2560x1600 32 bpp 60Hz Dual: 1920x1200 max support for dual monitors Hardware accelerated monitor rotation support (L-shaped dual monitors)
<b>Audio</b>	Output: 1/8-inch mini jack, full 16 bit stereo, 48KHz sample rate Input: 1/8-inch mini jack, 8 bit stereo microphone	Output: 1/8-inch mini, 16 bit stereo. Internal mono speaker Input: 1/8-inch mini, 8 bit stereo microphone
<b>Physical characteristics</b>	Height: 1.38 inches (34mm) Width: 6.94 inches (177mm) Depth: 4.75 inches (121mm)	Height: 6.7 inches (170mm) Width: 1.6 inches (40mm) Depth: 7.3 inches (185mm)
<b>Shipping weight</b>	6 lbs. (2.7kg)	2.05 lbs. / 0.93 kg
<b>Mountings</b>	Stand for horizontal use and VESA wall mounting included	Vertical feet standard. Horizontal feet optional. Optional Dell Ergotron mounting bracket.
<b>Device security</b>	Built-in Kensington security slot (cable sold separately)	Built-in Kensington security slot (cable sold separately)
<b>Power</b>	Worldwide auto-sensing 100-240 VAC, 50/60 Hz. Energy Star® V.5.0 compliant power supply Average power usage with device connected to 1 keyboard with 1 PS/2 mouse and 1 monitor: under 7 Watts	Worldwide auto-sensing 100-240 VAC, 50/60 Hz. Energy Star® V.5.0 compliant power supply Average power usage with device connected to 1 keyboard with 1 PS/2 mouse and 1 monitor: 14.6 Watts in idle state
<b>Temperature range</b>	Horizontal and vertical operating positions: 50° to 104° F (10° to 40° C)	Operating: 32° to 104° F (10° to 40° C), horizontal and vertical positions. Storage: 14° to 140° F (-10° to 60° C)
<b>Humidity</b>	20% to 80%	20% to 80%
<b>Certifications</b>	Ergonomics: German EKI-ITB 2000, ISO 9241-3/-8 Safety: cULus 60950, TÜV-GS, EN 60950 RF Interference: FCC Class B, CE, VCCI, C-Tick Environmental: WEEE, RoHS Compliant.	Ergonomics: German EKI-ITB 2000, ISO 9241-3/-8 Safety: cULus 60950, TÜV-GS, EN 60950 RF Interference: FCC Class B, CE, VCCI, C-Tick Environmental: WEEE, RoHS Compliant.
<b>Warranty</b>	Three-year limited hardware warranty. Optional WyseChoice extensions and upgrades at <a href="http://www.wyse.com/warranties">www.wyse.com/warranties</a> .	Three-year limited hardware warranty. Optional WyseChoice extensions and upgrades at <a href="http://www.wyse.com/warranties">www.wyse.com/warranties</a> .



Learn more: Contact Dell Wyse at [sales@wyse.com](mailto:sales@wyse.com) or call 1-800-438-9973

