

# A world first, 3D over VDI

## Secure, virtualized 3D workstations



In a world's first, Dell Wyse now delivers the full benefits of cloud client computing to architectural, product design, and liquids/solids modeling engineers and manufacturing professionals running 3D applications. By bringing together the power of Citrix HDX 3D and the advanced multimedia presentation capacity of the Dell Wyse Z90D7 cloud client, graphics-intensive tasks such as rendering 3D images, walkthroughs and product modeling are now a reality in virtualized desktop environments.

Now, all engineering data and intellectual property can be centrally stored and secured

The result: secure, virtualized 3D workstations, can be cost-effectively deployed anywhere in the world – without putting intellectual property and sensitive data at risk.

### Pain Points without HDX 3D

- Intellectual Property stored outside of the data center – not secure
- Difficult to leverage distributed engineering teams for global collaboration
- Difficult and time-consuming to manage hundreds or thousands of graphics workstations around the globe
- Unproductive down-time as distributed teams wait for each other
- Very large files must be transferred over long distances, often over slow connections
- Difficult to ensure each engineer is working on the correct 3D application release/version
- Low bandwidth, long distance, high latency connections can hinder progress

### Advantage with HDX3D

A new trend, "engineering anywhere" (e.g., connecting off-shore engineering from India or China to access systems in the U.S. or Europe) is now taking hold, enabled by VDI leaders Citrix and Dell Wyse. With centralization, customers can optimize their background processes and reduce the time from initial concept to working design, especially when multiple engineers collaborate on a common project. Now, all engineering data and intellectual property can be centrally stored and secured, including:

- Engineering drawings
- Bills of Materials
- Cost Info
- Lifecycle Data



World first: 3D over VDI



## Benefits of HDX3D Pro Graphics with Dell Wyse Z-class thin clients

### Security

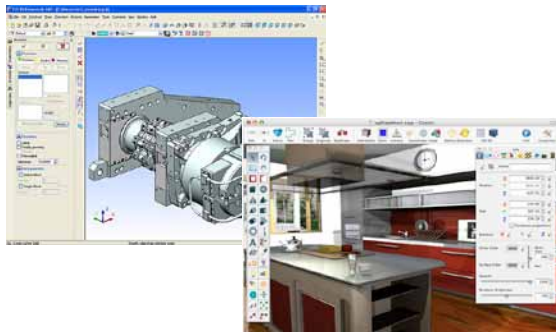
- Control access to valuable intellectual property and confidential information
- No local data or applications stored on the device

### Agility

- Fully leverage off-shore and remote talent on a global basis
- Facilitate tiered supplier relationships and collaboration
- Enable world-wide business continuity

### Cost

- Reduce administrative burden and costs of maintaining many individual complex workstations
- Enable any single user to access multiple environments from a single device
- Give occasional users highly secure temporary access
- Simple but powerful, silent (no fans or moving parts), low energy, secure, affordable and easy to deploy and manage thin clients



### Vertical industries

#### High-end 3D graphics

- Engineering
- Manufacturing
- Oil & Gas
- Aerospace
- Automotive
- Medical

#### Access scenarios

- Desktop replacement (LAN or branch office)
- Remote access, even over intercontinental WAN connections

#### Client

OS: WES 7

Citrix Online Plugin with HDX3D Pro Graphics Client

#### Hardware platform

Dual core AMD G-T56N 1.6 GHz Processor with AMD Radeon™ HD 6310 Graphics

4 – 32GB Flash      2 – 4GB RAM

10/100/1000 Gigabit Ethernet

One DisplayPort (Optional DisplayPort to DVI-I adapter available, sold separately)

One DVI-I port, DVI to VGA (DB-15) adapter included

Six total USB ports:

- Four USB 2.0 ports (two front, two rear)
- Two SuperSpeed USB 3.0 ports on rear (backwards compatible with USB 2.0)

#### Factory options

Internal 802.11 A/B/G and dual-band N wireless

Bluetooth 2.1+ EDR

Fiber NIC network connectivity (coming soon)

Legacy connectivity – adds 2 serial ports, 1 parallel port and 1 PS/2 port

#### XenDesktop

XenDesktop 4.0 or later

#### Server

Citrix Virtual Desktop Agent, HDX3D;

OS: Win XP, Win 7 both 32 and 64 bit Workstation or Server or Serverblade with min Dual Core. rec. Quadcore Nvidia GPU Driver with

CUDAGPU: Nvidia with min 96 CUDA Cores



Learn more: For immediate assistance in North America, contact Dell Wyse at [sales@wyse.com](mailto:sales@wyse.com) or call 1-800-GET-WYSE

[wyse.com](http://wyse.com)

**Dell Wyse**  
3471 North First Street  
San Jose, CA 95134-1801

**Visit our website at:**  
<http://www.wyse.com>  
Or send email to: [sales@wyse.com](mailto:sales@wyse.com)

**Dell Wyse Sales**  
800 GET WYSE  
(800 438 9973)

**Dell Wyse Customer Service Center:**  
800 800 WYSE (800 800 9973)

