



Rendering just got faster

Achieve astonishing levels of productivity in your video editing work with Dell Precision 15 5000 workstations and Windows 10

How many hours have you wasted staring at a screen waiting for a video project to render out? We bet it's quite a few. The thing is, what most people don't realise is that by upgrading to a workstation – a system that has been tailor-made to cope with any demanding creative project – you're opening the door to whole new levels of efficiency in the way you work.

Essentially, that battered old laptop or desktop computer that you've been hammering away on simply hasn't been designed with strenuous tasks like video production in mind. Workstation products, like the Dell Precision 15 5000 Series, have been designed from the ground up with you and your productivity in mind. By combining professional graphics solutions, like the

NVIDIA Quadro M1000M mobile GPU, and new Intel Xeon mobile processors, you have all the power you'll ever need for big rendering projects and for coping with enormous files, without skipping a beat.

Not convinced? The crucial factor is this – the less time you spend worrying about file sizes and rendering out HD scenes, the more time you can spend actually being creative, which sounds more appealing, right? And as Dell Precision 15 5000 Series mobile workstations are so light and portable, you can do what you do best out on a shoot, on your commute, at home or in the editing suite with all the confidence that only workstation power can give you. All of this power is harnessed by Windows 10, the only operating system you need to achieve what you want.

Why choose Windows 10?

Microsoft's new operating system offers all of the flexibility you'll ever need, both at home and in the editing suite

Windows 10 is a significant step towards your operating system integrating seamlessly into your busy creative schedule. Sporting everything you could ever need to keep yourself organised and working at maximum efficiency, it's an operating system with your personal needs at heart.

By taking advantage of exciting new functions like the Snap feature, which allows you to snap up to four different apps into the four corners of the screen, you'll discover new ways to streamline your workflow. Approaching deadline? Snap your emails to the corner of the screen and remain client-facing, while still getting the job done in Premiere Pro. Looking for inspiration?

Snap your web browser and edit away without the need for switching between windows. As creatives, we're always looking for ways to improve our workflow – features like this one have been built with this need for exciting, unimpeded productivity in mind.

On top of this, Cortana is always on hand for whatever you need, from managing your personal calendar at crunch time, to digging out old projects you thought you'd forgotten about, to searching the web for all the inspiration you need to unleash your creativity.

So why choose Windows 10? It's simple – whatever your discipline, whatever your interests, Windows 10 offers the definitive 21st Century solution for creatives with busy work



lives, and busy social lives too. Blending typical Microsoft ease of use with forward-thinking productivity aids like Cortana, the Snap feature and more, Windows 10 is the perfect way to augment your creative life, keeping you organised while allowing you to let your imagination run as wild as you need it to.

WHY WORKSTATION?

There's always the concern that you'll struggle to get the power you need for a demanding edit from a portable device – you'd be forgiven for thinking that something that sits in the shell of a laptop like Dell Precision 15 5000 Series workstations wouldn't be as capable as a traditional tower that you might find in an office or studio. However, Dell Precision 15 5000 Series workstations are built completely with power and productivity in mind, and are more than capable of making short work of a complicated project. It's a workstation that has everything you might expect from your average computer, but dig beneath the sleek exterior and you'll find a wealth of features and capabilities dedicated to the creative-minded that you'll only find in a professional workstation. It's not just a workstation – it's your best friend when it comes to video projects.

WINDOWS 10

Speed, power and efficiency are all well and good, but any workstation needs a solid operating system at its core to ensure you get the best out of your experience. Windows 10 offers all of the intuitive functionality that you'd expect from Microsoft, but comes complete with a bevy of new features that will revolutionise your workflow. Windows 10 is now offering much more to videographers looking for the ultimate Adobe Premiere Pro experience.

“You'll find a wealth of features and capabilities dedicated to the creative-minded that you'll only find in a workstation”

This is an operating system built with multi-tasking in mind. Cortana, your Windows 10 personal assistant, is always on hand to help you dig out project files, search the internet for inspiration and much more. Equally handy is the Snap feature, which allows you to drag apps to all four corners of the screen, ushering in a new era of multi-tasking and productivity. The new Task View button reveals all of your open programs and documents, allowing you to access all of your open documents and panels in an instant. This core feature will, like the others we've previously mentioned, help you to remain swift and organised during an edit without having to constantly minimise windows.

POWER WHERE YOU NEED IT

Adobe Premiere Pro offers you all the tools you need to create any kind of creative video project, from documentary films to time-lapse sequences. Luckily, Premiere Pro and Windows 10 work together seamlessly, combining to create the perfect digital environment for you at home or in the studio. Software like this, and the heavy rendering jobs that it undertakes, can be extremely demanding, so if you're looking to exploit that perfect harmony between hardware, operating system and specialist software, your best bet is a professional workstation product rather than a traditional laptop or computer – they've been designed to handle professional-level projects, where normal devices haven't.



It's critical to bear in mind exactly what your powerful new workstation will actually be doing to help you succeed in your creative project. Simply choose which apps you wish to install onto the Precision 15 5000 workstation and you can begin creating; it boasts an Intel Xeon E3-1505M V5 processor, which is built for highly intensive tasks like video rendering and will chew through anything you throw at it, from enormous video files to any embellishments you want to apply in After Effects. This makes it ample for getting the best out of Adobe Premiere Pro, giving you peace of mind that whatever commission comes your way, this new breed of workstation has the power and speed for you to conquer complex video

production tasks in no time at all – outperforming any run-of-the-mill laptop in the process.

INCREDIBLE RENDERING SPEEDS

We spoke about rendering earlier on, but to reiterate, the differences in render times between a bog-standard laptop and systems like Dell Precision 15 5000 Series workstations are remarkable. For video editors, render times can make or break a project, especially when you're working to a tight deadline. Luckily, Dell has taken extremely intensive tasks like rendering into account and built a series of workstations that are suited to any task, no matter how strenuous.

Intel Xeon processors are synonymous with speed and power and feature in workstations due to their incredible capabilities – they're perfect for anyone relying on rendering out video on their workstation, which, as you know, can be a real pain when you're dealing with enormous video files. By upgrading to a professional workstation, you can spend less time worrying about production management and more time letting your creativity sing, which sounds good, right?

Dell Precision 15 5000 Series workstations utilise NVIDIA Quadro M1000M graphics as standard. Offering 2GB of VRAM and 512 CUDA cores, these cards are great for HD video and running multiple monitors, which will come in useful if you're someone who wants to be able to get up close and personal with a timeline or keep an eye on rushes while editing. Professional graphics solutions like the NVIDIA Quadro M1000M offer the perfect mixture of high performance and low power consumption, meaning you can work for hours without your workstation breaking a sweat. Gaming cards and integrated graphics are designed for shorter periods of intense use – professional GPUs have been designed to run at full capacity for extended periods of time, meaning you can always rely on your workstation to cope admirably with long rendering jobs.

CRYSTAL CLEAR DISPLAYS

Dell Precision 15 5000 Series workstations rock a super sharp 3840x2160 resolution, and wideview 15.6" LED-backlit screens. Whether you're busily making colour corrections or syncing an audio track to your edit, you won't find any old portable system sporting such a crystal-clear display – your best bet is upgrading to a workstation.

Busy videographers like you might feel the need to invest in an extra monitor to run in tandem with your mobile workstation, as screen real estate is valuable when you're trying to get a million things done at once. The 4K screen on this workstation can be paired with another 4K display, like the 32" Dell UltraSharp UP3216Q monitor, making your projects look as sharp as ever in the editing suite or on the move and giving you the room to breathe that, as a creative, is always helpful.

Expert opinion: Chad Higgins

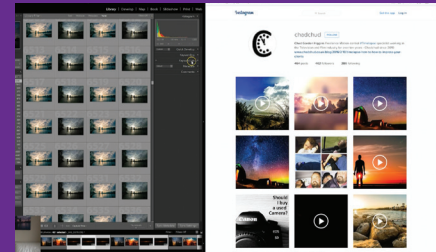
A well-known time-lapse photographer, Chad has been instrumental in a wealth of documentaries and films

"It's difficult finding processing power and functionality whilst on the move. Although I try and replace my laptop every year to keep up with the demand, there's little choice out there as the megapixels increase with each new camera release! I was eager to put the Dell Precision 5510 to the test.

"It's certainly a well-engineered machine. The rubber strips underneath are a great addition that would hold strong atop my car bonnet or equally on my lap perched half-way up a mountain.

"With a UHD resolution and a wide colour gamut, the display looks gorgeous. Using the Windows 10 photo app I took a look at some recent photos from a shoot and the detail was like nothing I've seen on a laptop before, even just glancing through unedited RAW files.

"To test the Intel Xeon processor and 16GB of RAM, I opened up Adobe Lightroom to re-visit an old project. I wanted to see how quickly I could render out the images and then import them into Premiere Pro CC to create a mini edit for social media. Copying files to the internal drive was fast as I offloaded 260GB via USB in just over 25 minutes. With some



edits and adjustments, it was time to see how the workstation would stand up against the thing that drains my time – rendering!

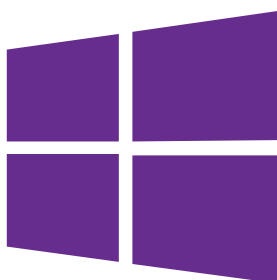
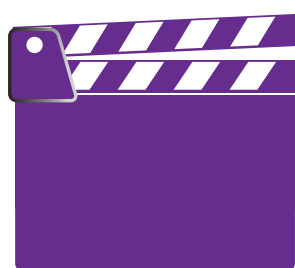
"After a speedy render, I imported the clips into Premiere to test its power. With an additional 2GB of GPU RAM, the laptop had no problem at all with UHD footage, and having compiled a quick 45-second edit, it only took a minute to render it down to HD – very impressive for such a compact device!

"I found the combination of Dell's technology and Windows 10 to be a perfect match and would recommend the 5510 to anyone. The raw power and ability to handle multiple tasks are a treat, both on location and at home whilst deep in the edit."



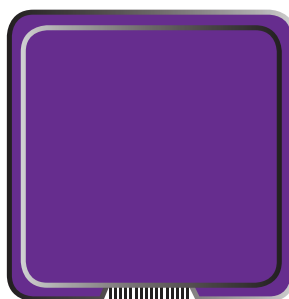
Supercharge your video workflow

Unleash your creative potential today by upgrading to a professional workstation and Windows 10



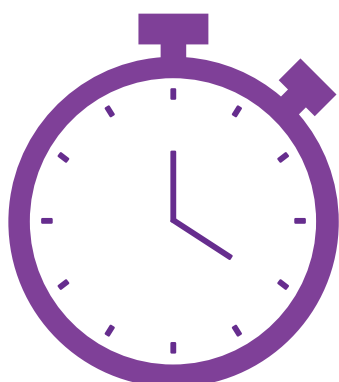
ON LOCATION Dell Precision 15 5000 workstations are portable enough to accompany you on any shoot, while still being powerful enough to cope with editing hours of HD footage.

WINDOWS 10 The handy Snap feature, Cortana's upgraded functionality and an intuitive new UI will help you keep all of your photos and video files organised to your taste.

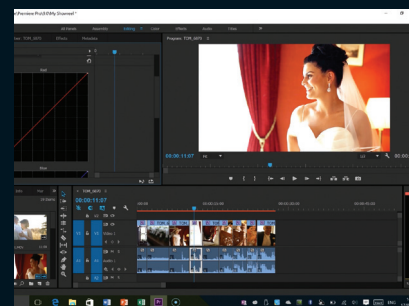


DELL ULTRASHARP UP3216Q More screen real estate will place you right at the heart of an editing project, and the UHD 3840x2160 resolution will make every single frame sing.

INTEL XEON E3-1505M For professional-level video editing, you're better off with a professional-level brain for your system. Mobile Intel Xeons breeze through big render jobs without flinching.



TIME SAVED Increased power and a better optimised operating system in Windows 10 make for a more efficient and, ultimately, far more productive Premiere Pro workflow - exactly what you need when you're uploading and organising video files, bouncing down audio tracks, rendering out large projects and anything else you could possibly dream up. Why limit your creativity? By upgrading to a workstation, you're giving yourself the tools to achieve new levels of productivity, ensuring you hit deadline on time, every time.



Expert opinion: Tom Calton

A pro videographer, Tom puts Windows 10 to the test

"The first thing that strikes you about the Dell Precision 15 5000 Series workstation is just how sharp the 15.6", 4K UHD monitor is. Having the extra large resolution it offers meant that I could do things like reducing the size of the video playback screen in Adobe Premiere Pro CC to allow more room for the other toolbars and windows, whilst still maintaining a high quality picture playback. In my experience, attempting this on other monitors in the past has made playback hard to see as it quickly transforms into a mass of blurred pixels.

"Having Windows 10 installed on the machine meant that I was able to open up multiple programs and quickly snap them to the four corners of the monitor with the Snap feature by pressing the Windows key and directional keys. By clicking the Task-view Button (at the bottom of the screen) it provided me with a blown-out view of all of the documents and programs I currently had open, allowing me to switch between them in an instant.

"Any professional videographer knows what it's like having to wait for a finished video to render. Depending on the length and quality of the clip, this can sometimes take hours to complete. On the Dell Precision 15 5000 Series workstation, render times were significantly faster, meaning it took less time to get the finished product over to the client. Its super-fast Intel Xeon processor also meant that while my project was rendering, I could easily start work on the next video job without any signs of the computer slowing down."