

Implementing Hyper-V

A Dell PowerVault™ MD3200 and MD3200i Technical
White Paper

Dell



THIS WHITE PAPER IS FOR INFORMATIONAL PURPOSES ONLY, AND MAY CONTAIN TYPOGRAPHICAL ERRORS AND TECHNICAL INACCURACIES. THE CONTENT IS PROVIDED AS IS, WITHOUT EXPRESS OR IMPLIED WARRANTIES OF ANY KIND.

© 2010 Dell Inc. All rights reserved. Reproduction of this material in any manner whatsoever without the express written permission of Dell Inc. is strictly forbidden. For more information, contact Dell.

Dell, the *DELL* logo, and the *DELL* badge, *PowerConnect*, and *PowerVault* are trademarks of Dell Inc. *Symantec* and the *SYMANTEC* logo are trademarks or registered trademarks of Symantec Corporation or its affiliates in the US and other countries. *Microsoft*, *Windows*, *Windows Server*, and *Active Directory* are either trademarks or registered trademarks of Microsoft Corporation in the United States and/or other countries. Other trademarks and trade names may be used in this document to refer to either the entities claiming the marks and names or their products. Dell Inc. disclaims any proprietary interest in trademarks and trade names other than its own.

March 2010

Contents

Implementing Hyper-V on the MD3200 Storage Array and the MD3200i Storage Array.....	3
Disclaimer	3
Supported Hardware and Software	3
Pre-Installation Requirements	4
Hardware Requirements.....	4
Software and Configuration Requirements.....	5
Enabling the Hyper-V Role on the Parent Server.....	8
Considerations for the Virtual Storage.....	9
Considerations When Using Pass-through Physical Disks or VHDs.....	9
Directly-Mapped iSCSI Virtual Disks to the VM (MD3200i Storage Array).....	10
Setting Up VMs with VHDs	10
Setting Up VMs with Pass-through Devices	15
Adding a Pass-through Device to an Existing VM	15
Creating a New VM Using Pass-through Disks Only	16
Clustering with Hyper-V	18
Creating Clusters	20
Adding Hyper-V to the Cluster	21
Configuring a Virtual Machine for Live Migration.....	22
Troubleshooting	25
Contact Information	27
Appendix.....	27

Tables

Table 1. Add Roles Wizard.....	8
Table 2. Virtual Machine Wizard	12
Table 3. Windows Server Settings Wizard.....	13
Table 4. New Virtual Machine Wizard	16
Table 5. Computer Management Wizard	20
Table 6. High Availability Wizard.....	21
Table 7. New Virtual Machine Wizard	23
Table 8. Configure Service or Application Wizard	24

Figures

Figure 1.	Dell PowerVault MD3200 Storage Array (Direct-Attach)	5
Figure 2.	Dell PowerVault MD3200i Storage Array (IP-SAN)	6
Figure 3.	MD3200i Network Configuration	7
Figure 4.	Virtual Storage Configuration	9
Figure 5.	Example of Virtual Disk Created	11
Figure 6.	Settings for New Physical Disks	15
Figure 7.	Logical View of Example VM	16
Figure 8.	Settings for Win2003_PT_Boot	18
Figure 9.	SAS MD3200 Configuration in a Clustered Environment	19
Figure 10.	MD3200i iSCSI Configuration in a Clustered Environment	20
Figure 11.	Storage Section	22
Figure 12.	Summary of VM Using Live Migration	25

Implementing Hyper-V on the PowerVault™ MD3200 MD3200i Series of Storage Arrays

This document provides information about implementing Microsoft Hyper-V technology with the Dell PowerVault™ MD3200 and MD3200i storage arrays.

Hyper-V provides the software infrastructure and management tools in the Windows Server 2008 operating system to create and manage a virtualized server computing environment. The configuration in this document uses the Windows 2008 Server Release 2 operating system with the following enhancements to Hyper-V:

- **Live Migration** - A transparent move of virtual machines (VMs) from one cluster-node to another with no loss of VM connectivity between nodes. Live Migration uses Clustered Shared Volumes (CSVs).
- **Dynamic VM storage** - Support for hot plug-in and hot removal of storage.
- **Enhanced processor support** - Up to 32 physical cores.
- **Enhanced networking support** - Support for jumbo frames on VMs.

For information about planning the implementation of Hyper-V, refer to *Planning for Hyper-V on the DELL PowerVault MD3200 and MD3200i Series of Storage Arrays*. For information about backup and recovery options, refer to *Data Protection on the Dell PowerVault MD3200 and MD3200i Series of Storage Arrays in a Hyper-V Environment*.

This document is intended to provide useful information for system administrators and IT planners or designers who are implementing Hyper-V in their environment.

Disclaimer

The steps in this document were performed on a test configuration. Live data was not used. This document implies no warranties. These instructions are not guaranteed to work in every situation. For the latest information about Dell IP storage area network (SAN) storage arrays, refer to the Dell storage array installation guides at this website:

<http://www.dell.com>

Supported Hardware and Software

Microsoft Hyper-V requires specific hardware. Refer to the Microsoft Windows Server catalog for Hyper-V to find out if your systems qualify. Go to this website:

<http://go.microsoft.com/fwlink/?LinkId=111228>

You also can check the Dell-supported hardware for Microsoft Hyper-V contained in the *Dell Solutions Overview Guide for Microsoft Hyper-V*. Go to this website:

<http://support.dell.com/support/edocs/software/HyperV/en>

If you need additional information, go to this website:

<http://www.dell.com/hyperv>

Both the MD3200 and MD3200i storage arrays are supported with the Microsoft Windows Server 2008 Release 2 operating running the Hyper-V role.

Pre-Installation Requirements

You must have the following hardware and software installed and set up to use Hyper-V on an MD3200 or MD3200i storage array.

Hardware Requirements

To install and use the Hyper-V role, make sure that you have the following processing features on your system:

- A x64-based processor
 - Hyper-V is not available for 32-bit systems or Itanium-based systems.
 - The AMD utility for Hyper-V compatibility can be downloaded from this website:
<http://support.amd.com/us/Pages/dynamicDetails.aspx?ListID=c5cd2c08-1432-4756-aafa-4d9dc646342f&ItemID=177>
- Hardware-assisted virtualization
 - Processors with Intel Virtualization Technology (Intel VT)
 - AMD Virtualization Technology (AMD-V)

- Hardware-enforced data execution prevention (DEP) must be available and enabled.
 - The Intel XD bit must be enabled (execution disable bit).
 - The AMD NX bit must be enabled (no execute bit).

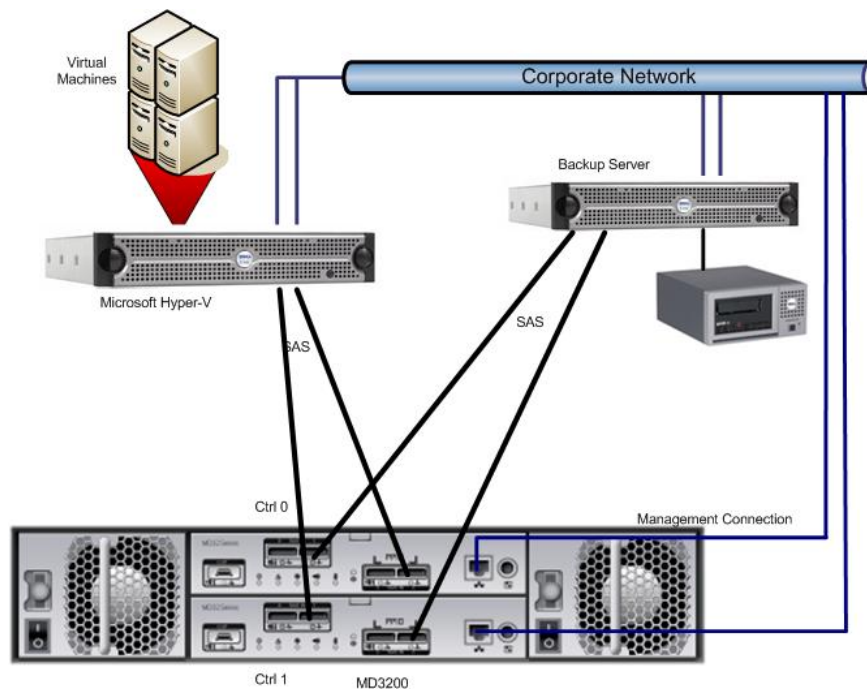
Software and Configuration Requirements

Install the updates that you need. To receive a current list of all of the updates, go to this website:

<http://technet.microsoft.com/en-us/library/dd430893.aspx>

Error! Reference source not found. shows how to configure a Microsoft Hyper-V environment with an MD3200 storage array.

Figure 1. Dell PowerVault MD3200 Storage Array (Direct-Attach)



Note: Install two dual-ported host bus adapters (HBAs), and use a port from each one to improve availability. With this configuration, either a cable or a SAS HBA can fail, and the access to the data is still guaranteed.

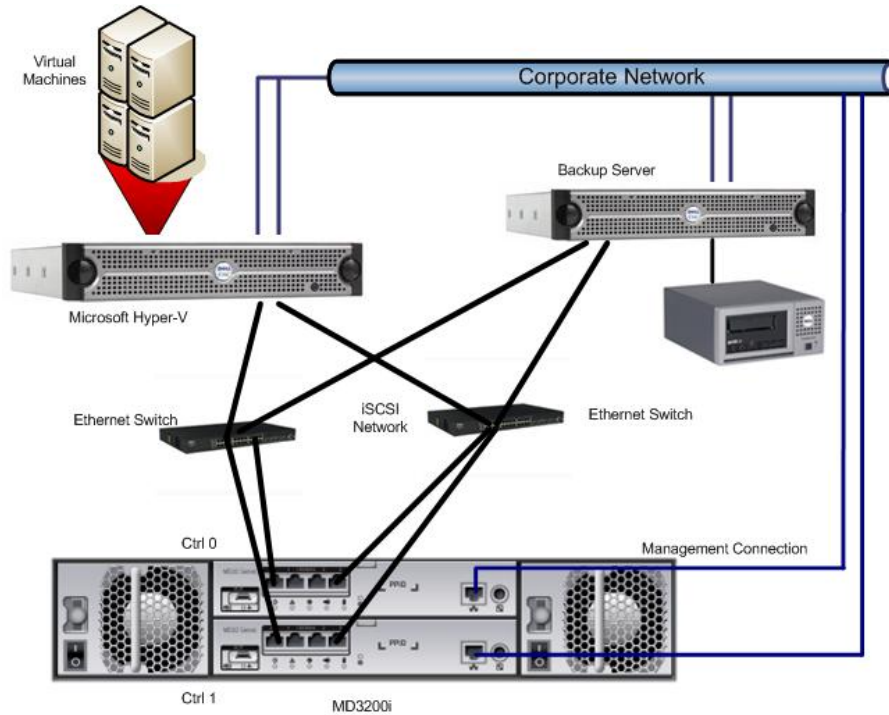
For more information about the MD3200 storage array, go to this web site:

http://www.dell.com/content/products/productdetails.aspx/pvaul_MD3200?c=us&cs=555&l=en&s=biz&dgc=IR&cid=14054&lid=407200

Figure 2 demonstrates how to configure a Microsoft Hyper-V environment with a MD3200i.

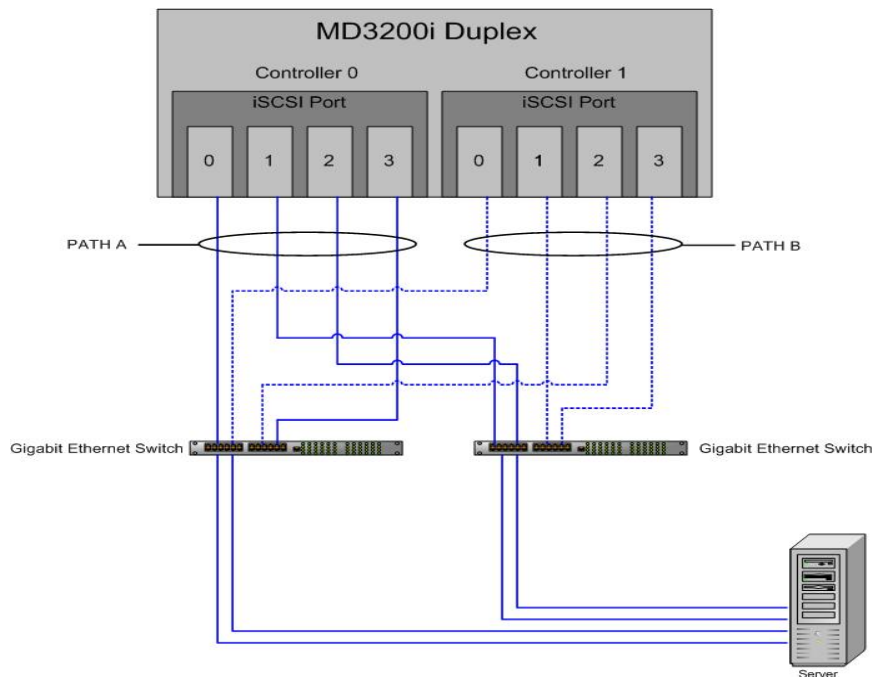
Figure 2. Dell PowerVault MD3200i Storage Array (IP-SAN)

Figure 1 Dell PowerVault MD3200i Storage Array (IP-SAN)



For the iSCSI-based MD3200i storage array, you must have two NICs for I/O communication to occur between the storage array and each server. It is best practice to set up the management ports (out-of-band) for managing the MD3200i storage array because they will be required for the initial configuration. For best performance when planning the network connection to the MD3200i storage array, make sure that the cabling looks similar to Figure 3 (this configuration uses maximum performance by using all four ports per controller, however, a minimum of two connections is recommended).

Figure 3. MD3200i Network Configuration



The Module Disk Storage Manager comes with the device specific module (DSM) for Microsoft multi-path I/O (MPIO). MPIO provides load-balancing between the two ports of one RAID controller module. For best performance, make sure that load-balancing is enabled and active. Load-balancing allows you to use up to 4Gb/s for each virtual disk on the MD3200i storage array.

For more information about the MD3200i storage array, go to this website:

http://www.dell.com/content/products/productdetails.aspx/pvaul_MD3200i?c=us&cs=555&l=en&s=biz&dgc=IR&cid=14054&lid=407200

For more information about how to plan for an IP SAN network with the MD3200i storage array, refer to the *IP SAN Best-Practices* at this website:

http://www.dell.com/downloads/global/solutions/public/white_papers/IP-SAN-BestPractice-WP.pdf

You can choose one of these load-balance policies to optimize I/O performance.

Round Robin with Subset

The round-robin with subset I/O load-balance policy routes I/O requests in rotation, to each available data path to the RAID controller module that owns the virtual disks. This policy treats all data paths to the RAID controller module that owns the virtual disk equally for I/O activity. Data paths to the secondary RAID controller module are ignored until ownership changes. The basic assumption for the round-robin policy is that the data paths are equal. With mixed-host support, the data paths might have different bandwidths or different data transfer speeds.

Least Queue Depth with Subset

The least queue depth with subset policy is also known as the least I/Os, or least requests, policy. This policy routes the next I/O request to a data path that has the least outstanding I/O requests queued. For this policy, an I/O request is simply a command in the queue. This type of command, or the

number of blocks that are associated with the command, are not considered. The least queue depth with subset policy treats large block requests and small block requests equally. The data path selected is in the path group of the RAID controller module that owns the virtual disk.

Least Path Weight with Subset

The least path weight with subset policy assigns a weight factor to each data path to a virtual disk. An I/O request is routed to the path with the lowest weight value to the RAID controller module that owns the virtual disk. If more than one data path to the virtual disk has the same weight value, the round-robin with subset path selection policy is used to route I/O requests between paths with the same weight value.

Changing the Load-Balance Policy Using the Windows 2008 Disk Management Options

From the desktop of the host, right-click the **My Computer** icon, and select **Manage** to open the Computer Management dialog. Select **Disk Management** to view the list of virtual disks that are attached to the host. Right-click the virtual disk on which you want to set the load-balance policy, and select **Properties**. From the **MPIO** tab, select the load-balance policy that you want to set for this virtual disk.

Enabling the Hyper-V Role on the Parent Server

After you have installed the Windows 2008 Release 2 operating system on the servers, you can enable the Hyper-V role on those servers.

1. Go to **Computer Management**, expand the role section on the left pane, and select **Add Roles** in the middle pane.
2. Follow the instructions in the Add Roles Wizard.

Table 1. Add Roles Wizard

Page	Action
Server Manager	<ol style="list-style-type: none"> 1. Select the Hyper-V Role. 2. Click Next.
Virtual Networks	<ol style="list-style-type: none"> 3. Specify which network connections you want to use for Virtual Machine (VM) network traffic. 4. Click Next.
Confirm Installation Selections	<ol style="list-style-type: none"> 5. Verify your selections. 6. Click Install.
Installation Results	<ol style="list-style-type: none"> 7. Click Close.

Note Use dedicated network connections for the VMs.

After you restart the server, you can create the VMs.

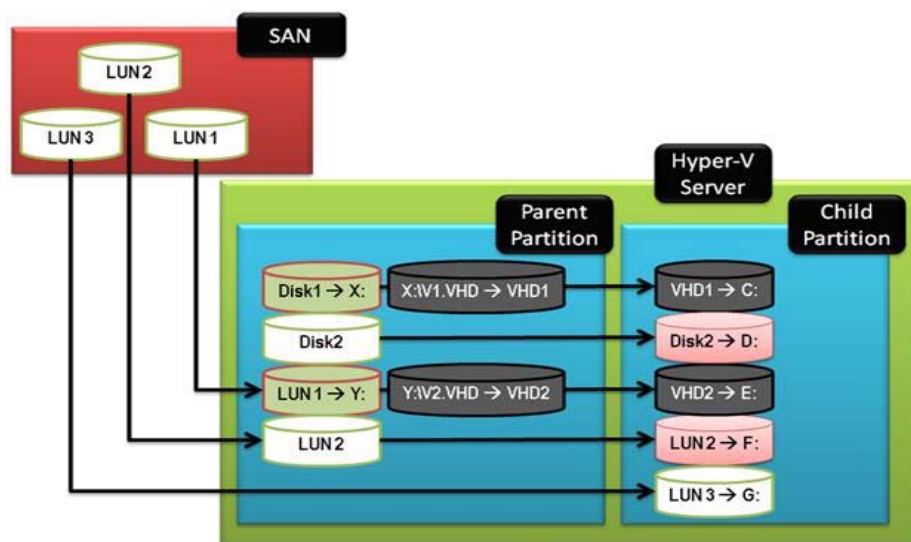
Considerations for the Virtual Storage

You can assign physical storage to a VM in various ways. For an out-of-band PowerVault™ MD3200 or MD3200i storage array, you have these options:

- Assign the virtual disk to the parent server, and create a file system and a virtual hard drive (VHD) for the VM.
- Assign an unformatted, pass-through physical disk directly to the VM.

With the MD3200i storage array, you also can assign a physical disk directly to the VM by installing the iSCSI software initiator on the VM similarly as you would on a physical server.

Figure 4. Virtual Storage Configuration



Size each logical unit number (LUN) to support the target VHD. To avoid warning messages generated by the parent partition regarding the physical disk running out of capacity, allocate an additional 200 MB to the LUN. Leave this additional 200 MB as empty space on the virtual disk.

Considerations When Using Pass-through Physical Disks or VHDs

Keep the following considerations in mind when using pass-through physical disks or VHDs:

- Pass-through physical disks offer slightly higher performance than VHDs and support virtual disk sizes greater than 2 TB. However, pass-through physical disks do not support VSS-based backup or checkpoints. VSS-based backup with hardware providers works as long as the backup is initiated from the parent. Inside the VM, only software-based VSS backup is supported.
- VHDs support the ability to export the drive to another parent server.
- VHDs support VM checkpoints.
- Both VHDs and pass-through physical disks can be used in clustered environments.

- If you are booting from a pass-through physical disk, store the VM files in a different location.
- For each VM, create a separate pass-through physical disk. You cannot share a pass-through physical disk for two VMs.
- The physical layout of the pass-through physical disk is the same as for any physical server.

Note: For the highest performance, use pass-through physical disks, but only as data devices. If you need optimal flexibility, assign fixed-size VHDs.

For more information about how to maximize performance for different applications on the Dell PowerVault MD3200 and MD3200i storage arrays, go to this website:

http://www.dell.com/downloads/global/products/pvaul/en/pvault_MD3200_whitepaper.pdf

Note: The configuration of your physical disk layout for performance on the Dell PowerVault MD3200 or MD3200i storage array depends on the application requirements of your VM (child partition), not on the Hyper-V parent server.

Directly-Mapped iSCSI Virtual Disks to the VM (MD3200i Storage Array)

You can easily transfer the virtual disk from a physical server to the VM. However, note that transferring the virtual disk reduces the number of hosts connected to the MD3200i storage array. Each VM uses exactly one host partition. VSS-based backup from the parent does not include the directly mapped iSCSI LUNs of the child partition. Booting also is not possible unless you use third-party software. The MD3200i storage array only requires a software initiator. The iSCSI HBA is not supported with the MD3200i storage array. Only software initiators are supported with the MD3200i storage array.

Note: You can use direct mapping for data devices that were originally used on a physical server or for data devices that you want to move back to a physical server.

Setting Up VMs with VHDs

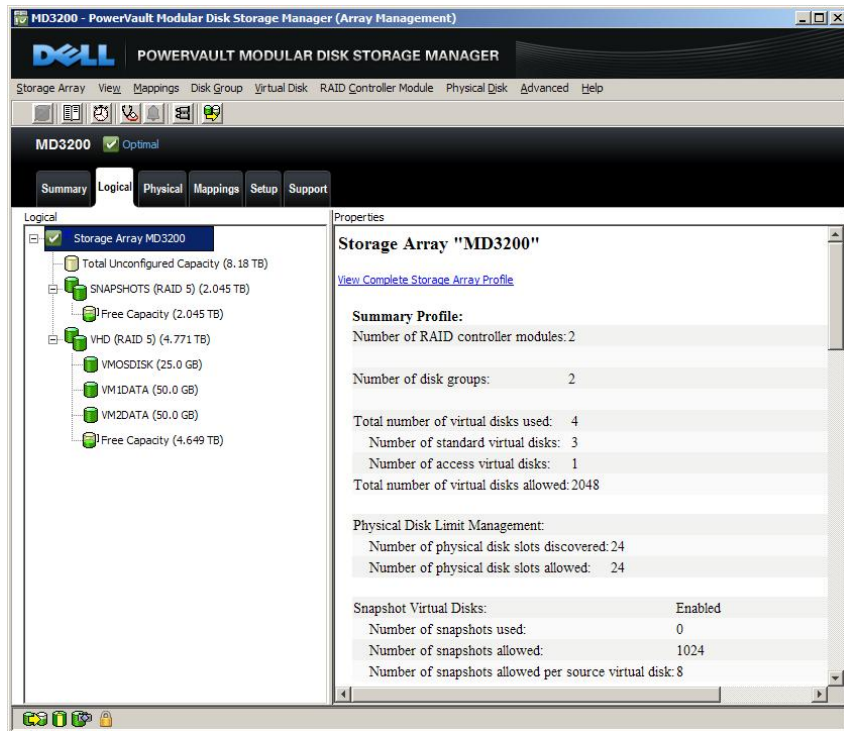
First, confirm that the Dell PowerVault™ MD3200 or MD3200i storage array is correctly installed and configured. For information about installing and configuring the storage array, refer to the documents on this website:

<http://support.dell.com/support/edocs/systems/MD3200/en/UG/HTML/iscsi.htm>

1. Create virtual disks on the MD3200 or MD3200i storage array for use as VHDs.

In the example, one virtual disk was created for the operating system (OS) drivers and two data virtual disks were created for user data on the VMs.

Figure 5. Example of Virtual Disk Created



Note If you plan to use VSS-based snapshots for backup purposes, create a blank, empty Virtual Disk Group for the snapshot repositories. This process requires second-generation firmware. Creating a blank and empty Virtual Disk Group improves performance, because the snapshot access is separate from other data access.

2. Map the newly created virtual disks to the Hyper-V parent server.
3. Go to Computer Management, and select **Disk Management** under the Storage section in the left pane.
4. Right-click all of the new drives, and select the **Online** option.
5. Initialize all of the new drives.
6. Create the partitions, and format the new drives.

For easy reference, name the test drives in Windows with the same names as they were given in the MD Storage Manager.

7. Set up the first VM by going back to the **Roles** option and selecting **Hyper-V Role**.
8. Click the right pane, and select **New** to start the Virtual Machine Wizard.

Table 2. Virtual Machine Wizard

Page	Action
Specify Name and Location	<ol style="list-style-type: none"> 1. Enter a name for the new VM. 2. Make sure that you select the Store Virtual Machine in a Different Location check box to save the VM configuration data on the drive that was created on the MD3200 or MD3200i storage array (called VMOSDISK in the test example). 3. Enter the location where you want the VM to reside. 4. Click Next.
Assign Memory	<ol style="list-style-type: none"> 5. Enter the amount of memory to allocate to the VM. 6. Click Next.
Configure Networking	<ol style="list-style-type: none"> 7. Select the type of network connection you want to use for the VM. 8. Click Next.
Connect Virtual Hard Disk	<ol style="list-style-type: none"> 9. You can create a new VHD, use an existing hard disk, or attach a VHD later. <ul style="list-style-type: none"> • If you want to create a VHD, select Create a virtual hard disk, and enter the name, location, and size. • If you want to select an existing VHD, select Use an existing virtual hard disk, and enter the location. <p>In the example, VMOSDISK (E:\) was selected and placed in the Windows 2003 folder.</p> 10. If you do not want to attach a VHD right now, select Attach a Virtual Hard Disk Later. 11. Click Next.
Installation Options	<ol style="list-style-type: none"> 12. Install an operating system on the VHD. You can install the operating system from the following sources: <ul style="list-style-type: none"> • A physical CD/DVD drive • An image (.iso) file • A boot floppy disk

	<ul style="list-style-type: none"> • A network-based installation server <p>13. Click Finish.</p>
<p>Note: An ISO image of an operating system CD is easy to use to install the operating system of the VM.</p>	

10. After creating the VM, change the settings of the VM to add a physical disk to the VM.

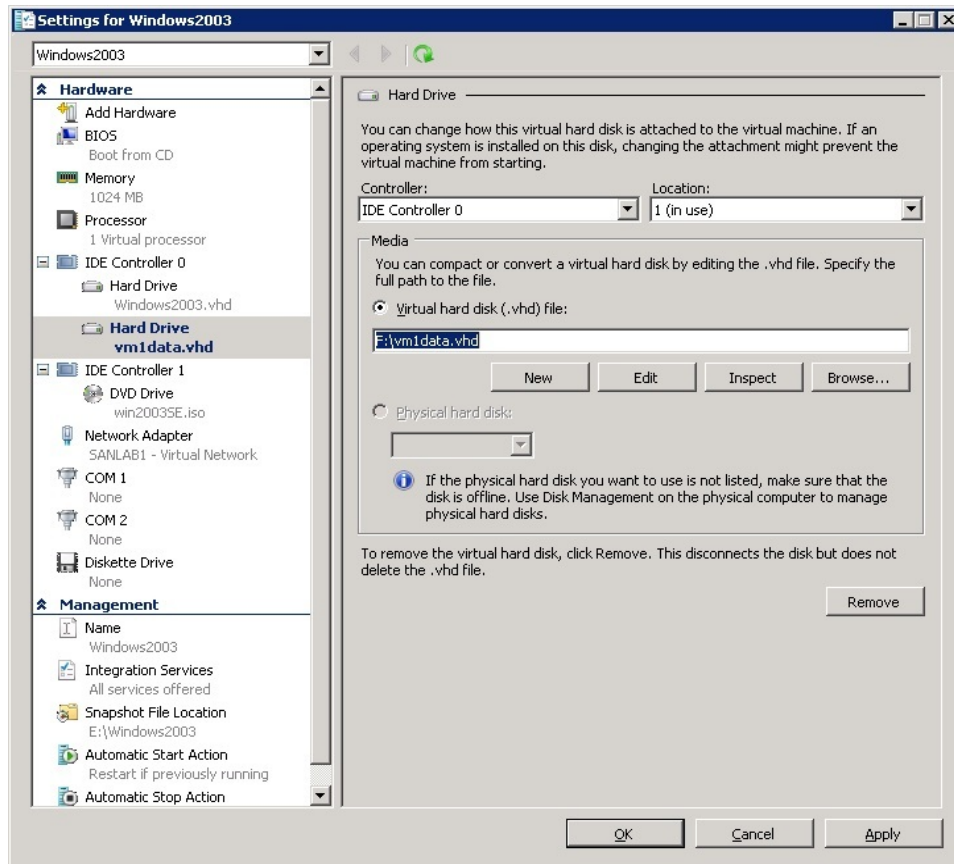
In the example, the VM1DATA physical disk was added to the VM Windows 2003.

Table 3. Windows Server Settings Wizard

Page	Action
Settings for Windows 2003 - IDE Controller	<ol style="list-style-type: none"> 1. In the settings for your VM, select the IDE controller where you want to add the physical disk. 2. You also can create a new SCSI controller and attach the physical disk to the SCSI controller. However, because everything is virtual performance difference does not exist between the IDE and the SCSI controller. Use the SCSI controller to attach more physical disks, if needed. The IDE controller is limited to two physical disks per controller. The boot disk must be IDE. 3. Click Add.
New Virtual Hard Disk Wizard - Choose Disk Type	<ol style="list-style-type: none"> 4. In the New Virtual Hard Disk dialog, select the options for VHD. <ul style="list-style-type: none"> • Dynamic expansion - The VHD file grows as data is stored to the physical disk with a maximum size not exceeding the size specified during creation. Select Dynamically Expanding when creating a new virtual machine using the new Virtual Machine Wizard in the Hyper-V Manager. • Fixed size - The VHD file uses the full amount of space specified during creation. • Differencing - The VHD file exists as a child disk in a parent/child relationship with an existing VHD. The parent VHD is left intact and changes that occur are stored on the child (differencing)

	<p>VHD.</p> <p>5. Click Next.</p>
<p>Note: For the best performance in production environments, use fixed-size VHDs because they eliminate the overhead that is created by expanding the VHD in a normal production environment.</p>	
Specify Name and Location	<p>6. Specify the name and the location of the new physical disk.</p> <p>7. Click Next.</p>
<p>For example, the VM1DATA disk formatted as drive F: \ was used.</p>	
Configure Disk	<p>8. Create a new blank virtual disk.</p> <p>9. If you have data stored on a different physical disk and you want to make the data available to your virtual disk, select the appropriate physical disk. Hyper-V converts the disk into a VHD.</p> <p>10. Click Finish.</p>

After finishing this wizard, you can view the new physical disk in the Settings window.

Figure 6. Settings for New Physical Disks

Your VM is ready to use. Now, you can install the operating system. If you need to attach more VHDs, repeat the previous procedure.

Setting Up VMs with Pass-through Devices

This section describes how to set up VMs with pass-through devices. You can add a pass-through device to an existing VM or create a new VM using pass-through devices only.

Adding a Pass-through Device to an Existing VM

1. Create virtual disks for recently defined VMs on the MD3200 or MD3200i storage array.
2. Map the virtual disk to the VM.

In the example, the VM1PASSTHROUGH virtual disk is mapped to the windows2003 VM.

3. View these disks in the Windows Disk Management window to make sure that they are in the Offline state.
4. Attach the virtual disk to the VM as a SCSI device. Go into the VM settings, and add a SCSI controller by clicking **Add Hardware** in the left pane of the Settings window for your VM.

5. Select the SCSI controller in the left pane, and click **Add Hard Drive**.
6. Select the **Hard Drive** option, and associate it with a LUN. In the example, LUN 3 was associated with windows2003 VM.
7. Click **OK**. The pass-through device is ready to use.

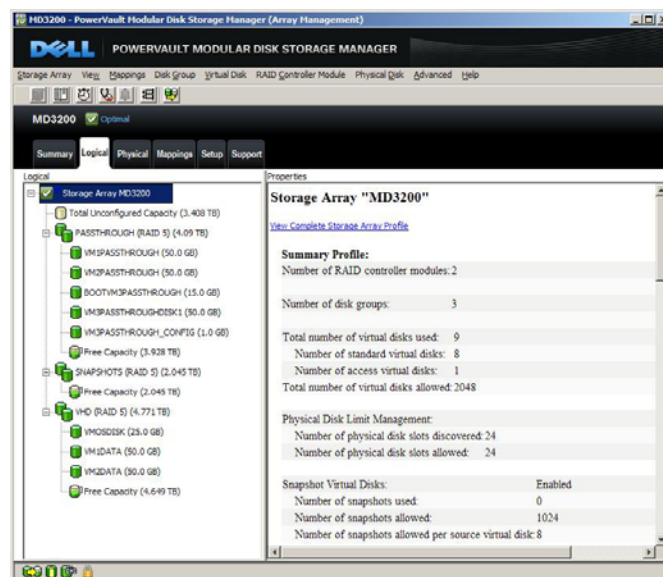
Creating a New VM Using Pass-through Disks Only

This section shows you how to create a VM using pass-through disks only. You can boot from a pass-through device, but you need a regular virtual disk on which to store the configuration data for the VM. In the example, three virtual disks were created on the MD3200 or MD3200i storage array.

Figure 7 shows a boot disk for the operating system of the VM, a data disk, and a 1-GB disk for the VM's configuration.

Figure 7. Logical View of Example VM

1. Map the `BOOTVM3PASSTHROUGH`, `VMPASSTHROUGHDISK1`, and the `VMPASSTHROUGH_CONFIG` to the host.



2. Create a partition on the 1GB `VM3PASSTHROUGH_CONFIG`, and format it with a file system.
The other two disks remain offline.
3. Using the New Virtual Machine Wizard, go to the Hyper-V configuration, and create a new VM.

Table 4. New Virtual Machine Wizard

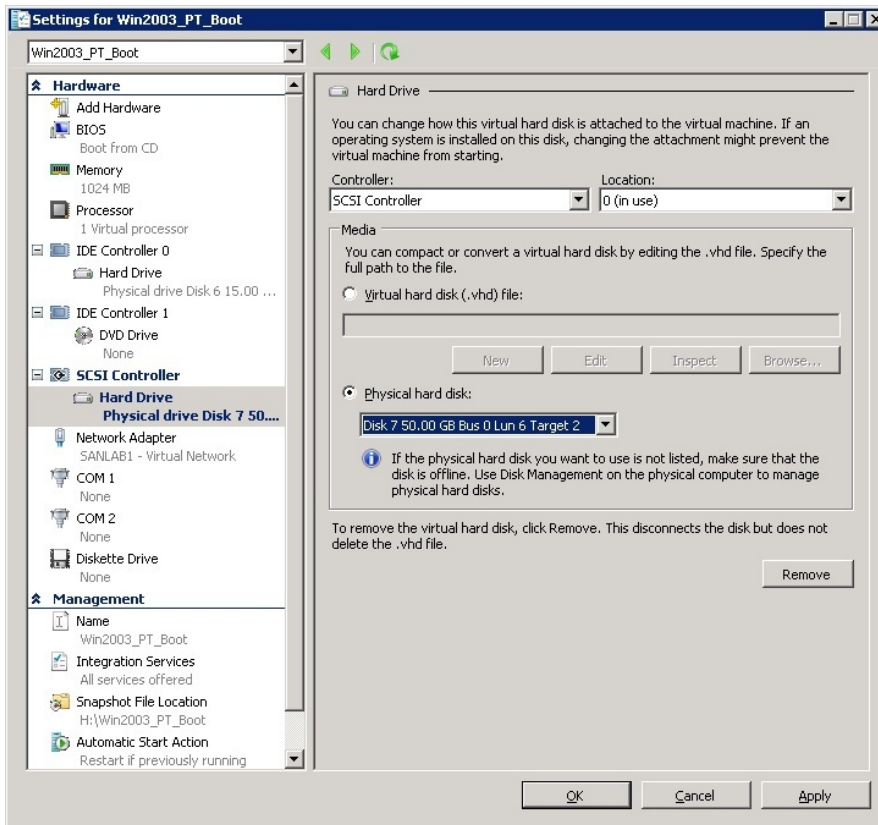
Page	Action
Specify Name and Location	<ol style="list-style-type: none"> 1. Enter a name for the new VM. 2. Select Store the virtual machine in a different

	<p>location.</p> <p>3. Select a location for the VM.</p> <p>4. Click Next.</p>
Configure Networking	<p>5. Associate the VM configuration with the newly-created drive H: \.</p> <p>6. Click Next.</p>
Assign Memory	<p>7. Assign memory and networking.</p> <p>8. Click Next.</p>
Connect Virtual Hard Disk	<p>9. When the wizard asks you which physical disk you want to attach, select Attach Virtual Hard Drive Later.</p> <p>10. Click Finish.</p>

4. Go to the settings of the newly created VM.
5. Select the IDE controller, and add a physical disk. The boot disk must be attached to the IDE controller.
6. Associate the physical disk with the `BOOTVM3PASSTHROUGH` disk.
7. Add the data disk as a SCSI controller device. Select **Add Hardware**.
8. Add the SCSI controller and the `VM3DATAPASSTHROUGH` disk as the physical disk for this controller.

Figure 8. Settings for Win2003_PT_Boot

The VM is ready for the installation of the operating system.



Clustering with Hyper-V

If you want to use clustering for Hyper-V, carefully observe the following requirements:

- Use identical server hardware (including chipsets), which will eliminate issues regarding failover. The supported list of Servers can be found here: <http://support.dell.com/support/edocs/software/HyperV/en>
- Avoid having a single point-of-failure in your communications network. Connect cluster-nodes through a network that uses redundant switches or similar hardware.

Note: You can connect cluster-nodes with a single network. However, it is best to use a redundant communications network.

- All cluster disks must be basic disks. Dynamic disks are not supported.

MD3200-specific cluster requirements:

- Only use two dual-ported SAS adapters for each server, and connect one port of each adapter to the MD3200 storage array in clustered environments to achieve the highest level of redundancy.

MD3200i-specific cluster requirements:

- The storage configuration must be redundant. Only use two or more network connections for iSCSI traffic to the MD3200i storage array.
- Use dedicated iSCSI network adapters for iSCSI environments. You cannot share communication and iSCSI traffic on the same adapter in clustered configurations.

All cluster-nodes must be able to communicate with the same virtual disks on the MD3200 or MD3200i storage array. You can use storage partitioning to create a server group with the cluster-nodes and assign the necessary virtual disk to them. Make sure that only the cluster -nodes have access to those virtual disks. Make sure that other servers do not have access to those virtual disks.

When planning, create an additional virtual disk for the quorum disk. Make this virtual disk at least 1 GB in size. This disk contains the quorum information and is used as the witness disk. Format the quorum virtual disk with NTFS. More details on creating a quorum disk are described in the next section.

Figure 9. SAS MD3200 Configuration in a Clustered Environment

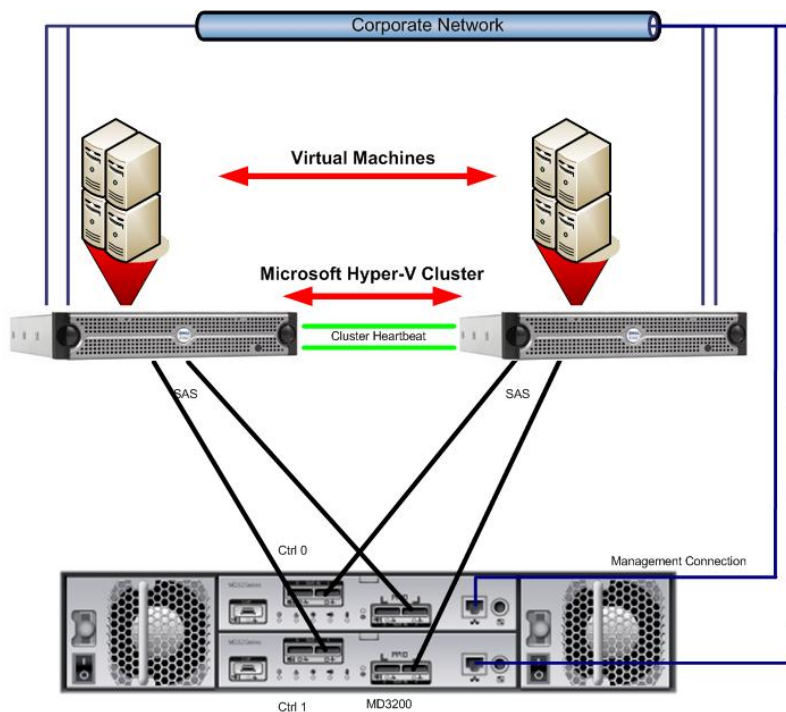
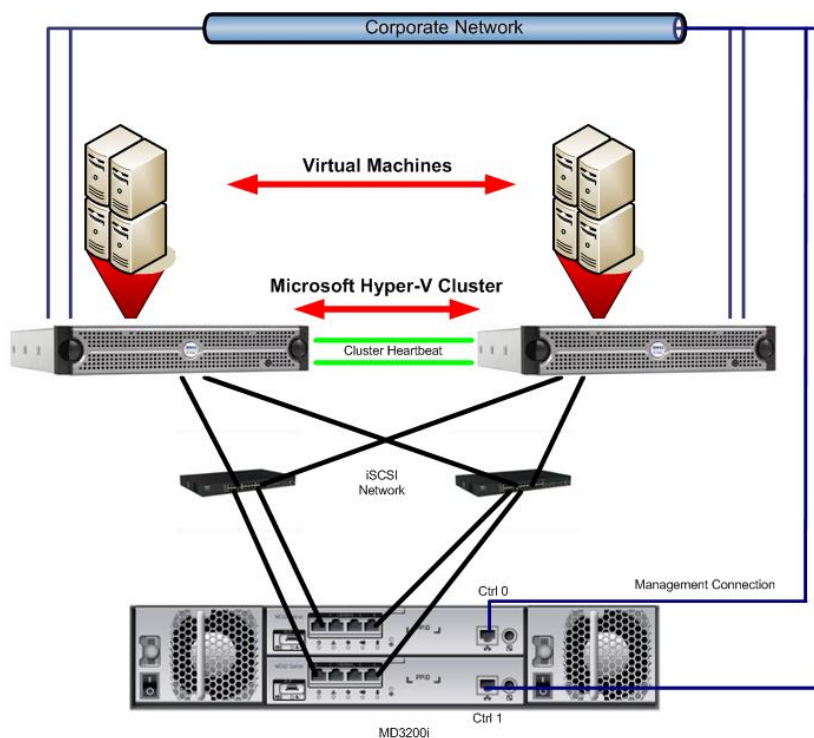


Figure 10. MD3200i iSCSI Configuration in a Clustered Environment



Creating Clusters

1. Create a quorum device.

If you plan to use pass-through devices on your VMs, make sure that the VM configuration files are also stored on the shared storage and that the shared storage is available to all cluster-nodes. You can create an additional virtual disk on the MD3200 or MD3200i storage array or increase the size of the quorum virtual disk to store the configuration files there. You also might create an additional virtual disk with approximately 300 MB to 500 MB allocated for each VM. For example, 10 VMs equal a 5-GB disk size.

2. Create a host group for the servers, and make sure that all of the servers that are part of the cluster have access to the MD3200 or MD3200i storage array.
3. Enable the High Availability feature of the Windows 2008 server by performing these steps. Start this procedure by using the Computer Management Wizard.

Table 5. Computer Management Wizard

Page	Action
Computer Management	7. Select Features Task.

Select Features	<ol style="list-style-type: none"> 2. Click Add Feature, and select Failover Clustering. 3. Click Next.
Administrative Tools - Failover Cluster Manager	<ol style="list-style-type: none"> 4. In Administrative Tools, open Failover Cluster Manager, and select Create New Cluster.
Create Cluster - Select Servers	<ol style="list-style-type: none"> 5. In the Create Cluster Wizard, specify the first member of the cluster by entering the server name and selecting the server. 6. Click Next.
Access Point for Administering the Cluster	<ol style="list-style-type: none"> 7. Enter the network configuration for the cluster, and specify a cluster IP address for all of the networks you want to use in the cluster. 8. Click Next.
Add Node Wizard	<ol style="list-style-type: none"> 9. Confirm your selections, and click Add Node. 10. Click Next.
Select Servers	<ol style="list-style-type: none"> 11. Select all of the servers that you want to add to this cluster. 12. Click Next.
Configure Storage Witness	<ol style="list-style-type: none"> 13. Confirm the selection, and select a storage witness disk. 14. Click Next.

Your storage configuration appears in the Failover Cluster Manager.

Adding Hyper-V to the Cluster

You can add the Hyper-V to the cluster. Select **Services and Applications** in the High Availability Wizard.

Table 6. High Availability Wizard

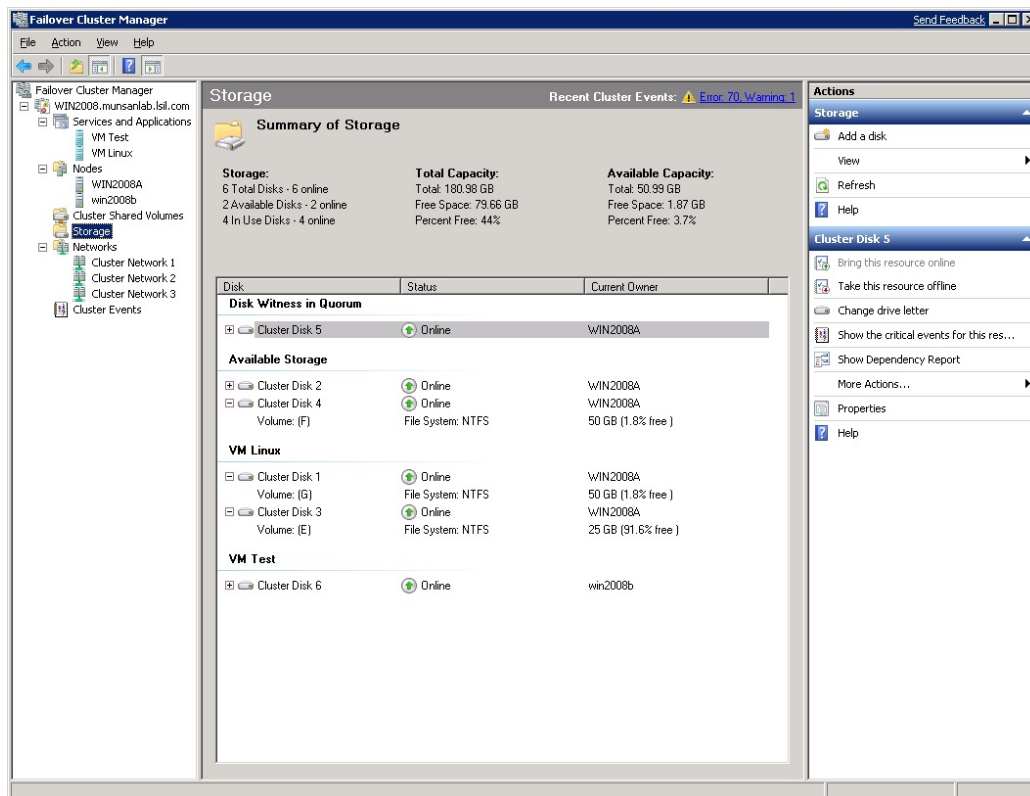
Page	Action
Select Services and Applications	<ol style="list-style-type: none"> 1. Click Add. 2. Select the application that you want to create. 3. Click Next.
Select Virtual Machine	<ol style="list-style-type: none"> 4. Select Virtual Machine, and select all of the previously configured VMs that you want to add. 5. Click Next.

Important: If you add VMs to a cluster that was previously defined without the high-availability option, you must manually add the dependencies of your storage to your VMs. If you do not perform this task, the VMs fail during cluster movements. To perform this task, go to the Storage section of the Failover Cluster Manager. Right-click the drives, and select **Add to Resource**. Pass-through devices do not show up in this section and do not need to be added to the dependency option.

If you have multiple VMs on a single physical disk, the VMs have the same dependencies. If you want to move one of the physical disks to another node, you must move all of the physical disks. To avoid this issue, create VMs on separate dedicated physical disks.

The storage section appears in the Failover Cluster Manager. All VMs should have dedicated storage assigned as dependencies.

Figure 11. Storage Section



Your VM is now highly available. You can click **Live Migrate** to move the VM without downtime to another node. This process lets you balance the load between nodes without affecting your VMs or lets you move VMs to another node if you need to do maintenance on one node. The Live Migration feature is new in the Windows 2008 Release 2 operating system and is transparent to the VM.

Configuring a Virtual Machine for Live Migration

After you have Hyper-V Cluster running correctly, you can use the Live Migration feature of the Windows 2008 Release 2 operating system for VMs.

The Live Migration feature can be very useful if you need to balance workloads between different nodes in your cluster, or if you need to shut down one node for maintenance.

To use the Live Migration feature, you must use Cluster-Shared Volumes (CSVs) for your VMs. CSV must be available for all of the nodes in the cluster.

1. Open the Failover Cluster Manager, and select **Cluster Shared Volumes**.
2. Click the right pane, and select **Add Storage**.
3. Select the disk that you want to add.

After you add the drive, the drive appears in the disk column. Make sure that you remember the path of the drive. In the example, the path is
C:\ClusterStorage\Volume1.

4. Configure a VM using this cluster shared volume.
5. Open the Hyper-V Manager, and select **Add Virtual Machine**.
6. Using the New Virtual Machine wizard, go to the Hyper-V configuration, and create a new VM.

Table 7. New Virtual Machine Wizard

Page	Action
Specify Name and Location	<ol style="list-style-type: none"> 1. Enter a name for the new VM. 2. Select Store the virtual machine in a different location. 3. Select the path created in the previous step 3 for the VM configuration. 4. Click Next.
Connect Virtual Hard Disk	<p>The <code>.vhd</code> location for the VHD of this location must be on a cluster-shared volume.</p> <ol style="list-style-type: none"> 5. Select Create a virtual hard disk. 6. For the location, select the same directory as you did in step 3. If you plan to use another cluster-shared volume(s) for the <code>.vhd</code>, select the appropriate directory.
Configure Networking	<ol style="list-style-type: none"> 7. Associate the VM configuration with the newly created drive. 8. Click Next.
Assign Memory	<ol style="list-style-type: none"> 9. Assign memory and networking. 10. Click Finish.

Note: Make sure that the VM is powered down before you proceed with the next step.

After you have enabled CSV, you can make your VM highly available.

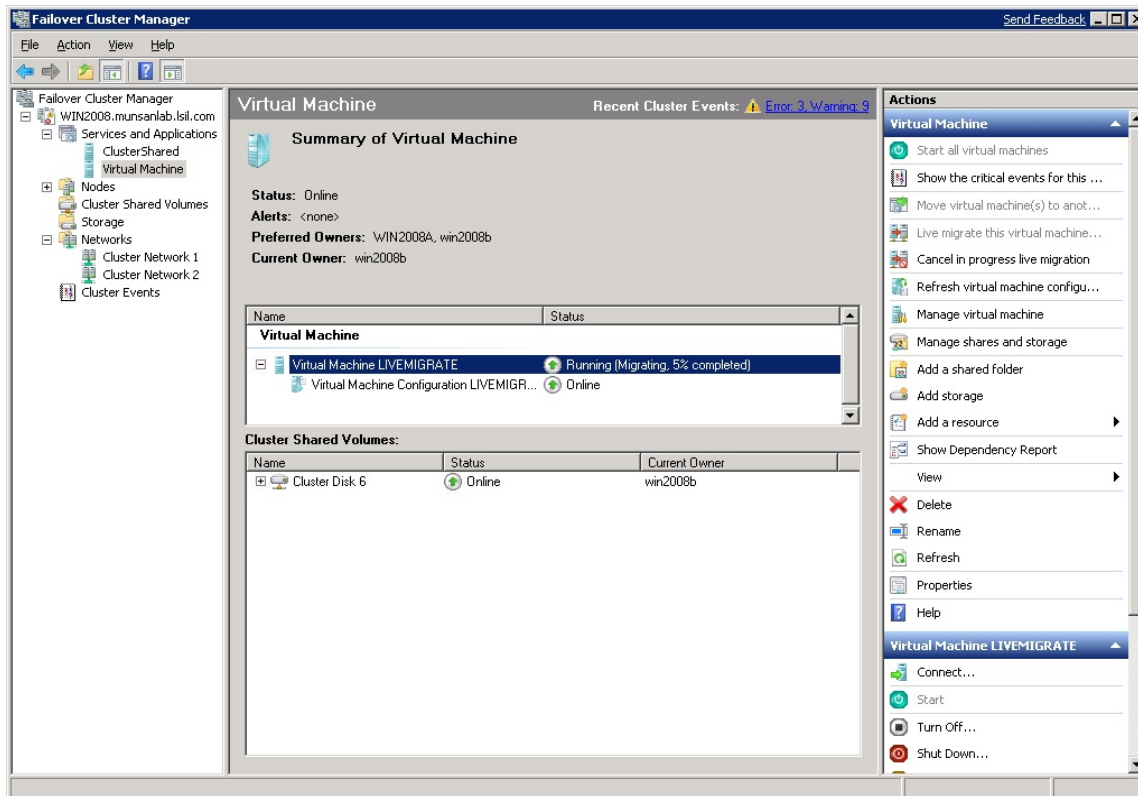
1. Open the Failover Cluster Manager, and right-click **Services and Applications**.
2. Use the Configure Service or Application Wizard to add a VM.

Table 8. Configure Service or Application Wizard

Page	Action
Select Service or Application	<ol style="list-style-type: none"> 1. Select Virtual Machine. 2. Click Next.
Select Virtual Machine	<ol style="list-style-type: none"> 3. Select your newly created VM. 4. Click Next.
Confirmation	<p>This page shows the VM that you chose in step 3.</p> <ol style="list-style-type: none"> 5. Click Next.
Configure High Availability	<p>A status bar shows the progress of the configuration.</p>
<i>Summary</i>	<p>This page shows if the configuration was successful.</p> <ol style="list-style-type: none"> 6. Select View Report to view the report. 7. Click Finish.

You can now turn on the VM. You can select the VM and use the Live Migration feature to move the VM from one node in the cluster to another node.

Figure 12. Summary of VM Using Live Migration



Troubleshooting

It is important that your storage status is at Optimal status. If an issue occurs, you can correct problems by clicking on the Recovery Guru.

- If you cannot access a virtual disk on the MD3200 or MD3200i storage array, make sure that the Host-to-Virtual Disk mapping is correct. On the iSCSI initiator, make sure that you have access to all of the targets of the MD3200i storage array. Check any network problems.
- Run the `dsmutil` command to make sure that all paths are available. This utility comes with the MDSM MPIO, and it is located in the following directory (on x64 servers):

```
C:\Program Files (x86)\DSMDrivers\md3dsm>
```

- Use the `-g` option, and enter the target ID of your MD3200 or 3000i storage array. The storage arrays should be numbered sequentially.

```
C:\Program Files (x86)\DSMDrivers\md3dsm>dsmutil -g0
```

The paths appear in the output extract.

```
Lun #0 - WWN: 600a0b800036e4cd00000f9a47affbca
```

```
-----
```

```
LunObject: 0x0
```

```
CurrentOwningPath: A
RemoveEligible: N
BootOwningPath: A
NotConfigured: N
PreferredPath: A
DevState: OPTIMAL
NeedsReservationCheck: N
TASBitSet: Y
NotReady: N
Busy: N
Quiescent: N
Controller 'A' Path
-----
NumLunObjects: 1
RoundRobinIndex: 0
Path #1: LunPathDevice: 0xFFFFFADF9C1E2290
IoCount: 0
DevState: OPTIMAL
RemoveState: 0x0 StartState: 0x0 PowerState: 0x0

Controller 'B' Path
-----
NumLunObjects: 1
RoundRobinIndex: 1
Path #1: LunPathDevice: 0xFFFFFADF98793410
IoCount: 0
DevState: OPTIMAL
RemoveState: 0x0 StartState: 0x0 PowerState: 0x0
```

- If you have issues with clustering, make sure that all of the cluster-nodes can access the storage array. Test to see if you can move a VM without the Live Migration feature to another node before you start testing the Live Migration feature. Check the

dependencies of the VM. Make sure that all of the physical disks involved appear as dependencies, except pass-through disks.

- Run the cluster verification test, and correct any outstanding clustering issues.

For information about troubleshooting MD3200 storage arrays, refer to the “Troubleshooting Problems” chapter of the *Dell™ PowerVault™ Modular Disk Storage Manager User’s Guide*. Go to this website:

<http://support.dell.com/support/edocs/systems/MD3200/en/index.htm>

Contact Information

Go to this website:

<http://www.dell.com/>

or call 1-800-WWW-DELL.

Appendix

Appendix A: References

Cisco, undated. *Flooding Control*

http://www.cisco.com/univercd/cc/td/doc/product/lan/c2900xl/29_35xu/olhelp/floodctl.htm

Dell, undated. *Dell™ PowerVault™ Modular Disk Storage Manager CLI Guide*

<http://support.dell.com/support/edocs/systems/MD3200/en/index.htm>.

Dell, 2007. *Manuals: Dell™ PowerVault™ MD3200*

<http://support.dell.com/support/edocs/systems/MD3200/en/index.htm>

Dell, 2007. *PowerVault MD3200i SAN Array for Storage Consolidation*

http://www.dell.com/content/products/productdetails.aspx/pvaul_MD3200i?c=us&1=en&s=bsd&cs=04

Dell, 2007. *Using iSCSI: Dell™ PowerVault™ Modular Disk Storage Manager User’s Guide*

<http://support.dell.com/support/edocs/systems/MD3200/en/UG/HTML/iscsi.htm>

Microsoft, 2007. *How to Align Exchange I/O with Storage Track Boundaries*

<http://technet.microsoft.com/en-us/library/aa998219.aspx>

Microsoft, 2007. *Planning Storage Configurations for Exchange 2007*

<http://technet.microsoft.com/en-us/library/bb124518.aspx>

Microsoft, 2008. *Microsoft Storage Technologies - iSCSI*

<http://www.microsoft.com/windowsserver2003/technologies/storage/iscsi/default.aspx> (FAQs and more information on Microsoft iSCSI)

Microsoft Download Center, 2007. *Microsoft iSNS Server 3.0*

<http://www.microsoft.com/downloads/details.aspx?familyid=0dbc4af5-9410-4080-a545-f90b45650e20&displaylang=en>

Microsoft Exchange Team Blog, 2007. *Exchange 2007 Mailbox Server Role Storage Requirements Calculator*

<http://msexchangeteam.com/archive/2007/01/15/432207.aspx>

Appendix B: Terminology

Bandwidth - The amount of data that the storage array can process over time. Bandwidth is measured in megabytes per second (MB/s).

Initiator - The system component that originates an input/output (I/O) command over an I/O bus or network. I/O adapters, network interface cards, and intelligent RAID controller module device I/O bus control Application Specific Integrated Circuits (ASICs) are typical initiators. A peripheral device is a target. (*The Dictionary of Storage Networking Terminology*)

Latency - The interval of time between submitting a request and receiving a response.

Multi Path I/O (MPIO) - In computer storage, an arrangement whereby more than one logical path exists between the central processing unit (CPU) in a computer system and its storage devices. This path is routed through the buses and bridge devices that connect the CPU and its storage devices. If one RAID controller module, port, or switch fails, the operating system can route I/O through the remaining RAID controller module so that work can continue.

Network interface card (NIC) - An adapter that connects an intelligent device to a network. The common terminology is a network interface card or an Ethernet NIC network.

Node - An addressable entity connected to an input/output (I/O) bus or network and used primarily to refer to computers, storage devices, and storage arrays. The component of a node that connects to the bus or network is a port. (*The Dictionary of Storage Networking Terminology*).

Pass-through physical disk - An unformatted physical disk directly assigned to the virtual machine.

Portal - A service that links initiators and targets when their IP addresses are not known.

Quorum virtual disk - A virtual disk on the shared storage array that stores the quorum information.

Response time - The interval of time between submitting a request and receiving a response.

Session - A group of iSCSI connections. As each connection is established, the session can negotiate its own unique parameters.

Signature - An embedded code that identifies the device. The signature is used when passing information between devices.

Target - The storage destination. In this document, the target is the MD3200i storage array.

Throughput - The number of individual I/Os the storage array can process over time. Throughput is measured in I/Os per second (IOPs).

Transmission Control Protocol/ Internet Protocol (TCP/IP) - A suite of protocols that includes Transmission Control Protocol (TCP), Internet Protocol (IP), User Datagram Protocol (UDP), and Internet Control Message Protocol (ICMP). These protocols form the basic set of communication protocols used on the Internet. (*The Dictionary of Storage Networking Terminology*)