

VMWARE® SITE RECOVERY MANAGER DESIGN & IMPLEMENTATION



Dell's Virtualization Site Recovery Manager service automates the execution of disaster recovery plans for a virtual environment, helping to reduce the time to recover and minimizing human errors during the recovery process. The Dell Site Recovery Manager Accelerator provides you with an on-site installation and configuration of Site Recovery Manager. You will also learn how to prepare an effective disaster recovery plan and configure Site Recovery Manager to execute your recovery plans in the event of an outage.

SITE RECOVERY MANAGER WILL BE OF USE IF:

- Simplified and automated disaster recovery workflow is needed.
- There is the requirement to turn manual recovery runbooks into automated recovery plans.
- If central management of recovery plans from VirtualCenter is needed.
- You need to eliminate recovery steps.
- You need to standardize recovery processes.

POTENTIAL BENEFITS

- The protection of your virtual environment against potential outages.
- Mitigate risks by utilizing experienced Dell Consultants and understand proven best practice.
- Accelerate staff learning for optimized implementation.
- Make recovery infrastructure affordable.
- Maximize resources through efficiencies and improvements.

PRICING AND SCOPE

- Contact your Dell representative for a pricing estimate.
- There is an estimated two days on-site and one day off-site for analysis preparation.

SERVICE DESCRIPTION

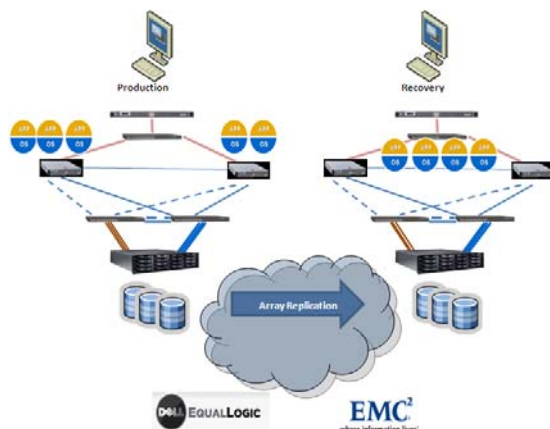
Dell's Virtualization Site Recovery Manager (SRM) automates the execution of disaster recovery plans for a virtual environment, helping to reduce time to recover and minimizing human errors during the recovery process.

KEY SERVICE STEPS

A pre-engagement meeting to introduce key participants, discuss objectives and preparation actions.

Onsite

- SRM Architecture and Planning.
- SRM Installation and Configuration.
- Disaster Recovery Workflow.
- Recovery Plan.
- Project Closeout.



SERVICE HIGHLIGHT

ROLES AND RESPONSIBILITIES

The Dell Consultant will implement the environment, provide best practice knowledge about configuration and administration. Advice will also be provided covering ongoing infrastructure management guidance.

CUSTOMER IT MANAGEMENT

The customer IT Management team must provide access to IT processes that involve the primary and secondary site virtual server environment during Recovery Manager Implementation.

CUSTOMER SYSTEMS ADMINISTRATION

IT Administration staff are responsible for server configuration. SAN and networking assistance is needed to provide support during the Site Recovery Manager implementation process.

Action	Responsibility
Guidance Meeting	All
Architecture and Planning	All
Site Recovery Manager Design Review	Dell Consultant
Site Recovery Manager Implementation	Dell Consultant
Analysis Conclusion	All
As-built Site Recovery Manager Implementation	Dell Consultant
On-site questions and answers	All

DELIVERABLES

- Install up to two Site Recovery Manager servers (representing primary and secondary recovery sites) to facilitate this engagement.
- The interactive installation also covers preparing an effective disaster recovery plan and the configuration of SRM to execute the plan in case of an outage or disaster.
- Provide an implementation report of the current environment and “Dell Field Experience” recommendations.

CUSTOMER RESPONSIBILITIES

- Virtual server infrastructure software, licensing, and installation.
- De-installation or Re-installation of products or applications.
- Access to systems as needed.
- Access to system documentation, diagrams, and related material

Not Included with this Service

- Any activities other than those specifically noted in the service description.
- Complete backup of all existing data and programs on the systems prior to Dell arriving at the location to deliver the service

DELL HAS NO LIABILITY FOR LOSS OR RECOVERY OF DATA OR PROGRAMS

©Copyright 2008 Dell Corporation Limited. Specifications are correct at date of publication but are subject to availability or change without notice at any time. Dell and its affiliates cannot be responsible for errors or omissions in typography or photography. Dell's Terms and Conditions of Sales and Service apply and are available on request. Dell service offerings do not affect consumer's statutory rights.

