

# Latitude XFR Solution Elements



The Dell™ Latitude™ XFR offers a variety of peripherals that....

## E-Legacy Extenders

Ideal for those who still rely on legacy ports regularly, XFR notebooks have options to expand the selection of legacy ports. The Legacy I/O Media Bay Module installs in the media bay and adds an RJ-11, RJ-45, and serial port. The E-Legacy Extender attaches to the base of the Latitude XFR notebook and adds a serial port, parallel port, and PS/2 port, all protected behind a sealed door. The Dual Serial E-Legacy Extender with gigabit NIC from Augmentix adds two serial ports and a 10/100/1000 NIC port. The Latitude E6420 XFR with either of the extenders attached meets MIL-STD testing<sup>2</sup> and drops of up to 36".

Legacy I/O Media Bay Module



Dual Serial E-Legacy Extender

Legacy I/O Media Bay Module: **331-3182**  
E-Legacy Extender: **317-1155**  
Dual Serial E-Legacy Extender: **A3903266**

...allow docking  
in the office...

## E-Port XFR Desktop Docking

The E-Port XFR desktop dock provides a comfortable workspace where you can plug a keyboard, mouse and monitor and use your XFR notebook like a desktop.

E-Port XFR Replicator: **331-3181**



E-Port XFR Replicator

...and in  
vehicles

Havis DS-DELL-101



## Vehicle Docking Stations

Havis and First Mobile Technologies (FMT) have designed a series of docking stations for the Latitude XFR notebooks. Docks are available with integrated power and RF passthrough.

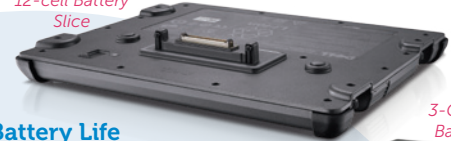
Havis DS-DELL-101: **A3985624**  
FMT FM-D-XFR-E: **A2686557**  
Havis DS-DELL-101-3 (with RF): **A3985625**  
FMT FM-D-XFR-E-RF (with RF): **A3498371**  
FMT FM-D-XFR-E-W/PS (with power): **A2704356**  
FMT FM-D-XFR-E-W/PS-RF (with RF and power): **A2955581**

## Extended Battery Life

Ideal for applications requiring full shifts away from a power source, the XFR offers options such as a 3-cell secondary media bay battery for up to 11.5 hours<sup>1</sup> of total battery life and a rugged 12-cell high-capacity battery slice for up to 22 hours<sup>1</sup> of total battery life along with 6-cell battery and media bay battery. The Latitude XFR notebook with the battery slice attached meets MIL-STD testing<sup>2</sup> and drops of up to 36".

Media Bay Battery: **312-1160**  
12-Cell High-Capacity Battery Slice: **312-0918**

12-cell Battery Slice



3-Cell Media Bay Battery



...expand capability  
in the field...

## Powerful Wireless Solution

Ideal for environments where extreme WLAN performance is required, the SkyRange400™ high power wireless LAN card can transmit up to twice the distance of standard WLAN cards<sup>3</sup>. It is compatible with a variety of Dell Latitude notebooks, but was designed specifically for the Dell Latitude XFR notebooks<sup>4</sup>. Available to federal customers only.

SkyRange400™ High Power WLAN Card: **A3719141**

SkyRange400™ High Power WLAN Card



For more peripherals for the  
Latitude E6420 XFR, see next page

# Latitude XFR Solution Elements



	Part Name / Number	Compatibility	Manufacturer	S&P SKU <sup>5,6</sup>
<b>Basic Vehicle Docking Stations</b> No Integrated Power or RF Passthrough	DS-DELL-101	E6400 / E6420	Havis	A3985624
	FM-D-XFR-E	E6400 / E6420	FMT	A2686557
<b>Vehicle Docking Stations with RF Passthrough</b> No Integrated Power	DS-DELL-101-3	E6400 / E6420	Havis	A3985625
	FM-D-XFR-E-RF	E6400 / E6420	FMT	A3498371
<b>Vehicle Docking Station with Integrated Power</b> No RF Passthrough	FM-D-XFR-E-W/PS	E6400 / E6420	FMT	A2704356
<b>Vehicle Docking Station with Integrated Power and RF Passthrough</b>	FM-D-XFR-E-W/PS-RF	E6400 / E6420	FMT	A2955581
<b>Desktop Docking</b>	E-Port XFR <sup>7</sup>	E6400 / E6420	Dell	331-3181
<b>Secondary Batteries</b>	3-Cell Secondary Battery Media Bay Module	E6420	Dell	312-1160
	Rugged 12-Cell Battery Slice	E6400 / E6420	Dell	312-0918
<b>Legacy I/O</b>	Legacy I/O Media Bay Module <sup>8</sup> with RJ-11, RJ-45, Serial	E6420	Dell	331-3182
	Rugged E-Legacy Extender	E6400 / E6420	Dell	317-1155
	Rugged Dual Serial E-Legacy Extender with Gigabit NIC	E6400 / E6420	Augmentix	A3903266
<b>Media Bay Modules</b>	8x DVD Media Bay Module	E6420	Dell	318-1099
	8x DVD+/-R Media Bay Module	E6420	Dell	318-1100
	3-Cell Secondary Battery Media Bay Module	E6420	Dell	312-1160
	320 GB Secondary Hard Drive Media Bay Module	E6420	Dell	342-2994
	USB 3.0 Media Bay Module (2x USB 3.0 ports)	E6420	Dell	342-2996
	Legacy I/O Media Bay Module <sup>8</sup> with RJ-11, RJ-45, Serial	E6420	Dell	331-3182
<b>High Power WLAN Card</b>	SkyRange400™ High Power Wireless LAN Card	E6400 / E6420	Augmentix	A3719141 <sup>9</sup>
<b>Shoulder Strap Kit</b>	Shoulder Strap Kit	E6420	Dell	331-3170
<b>Carry Case</b>	Carry Case	E6420	Dell	<b>Targus</b> A4974091 <b>Targus</b> A4974092 <b>Dell</b> 318-1414 <b>Dell</b> 318-1416

<sup>1</sup> Battery life based on lab testing. Varies by configuration, operating conditions and other factors. Maximum battery capacity decreases with time and use.

<sup>2</sup> With the Rugged 12-Cell High Capacity Battery Slice and Rugged E-Legacy Extender attached to the XFR, the system passes all MIL-STD testing as the system alone, with the exception of drop. With the previously mentioned peripherals installed, the system meets non-operating drop from up to 36".

<sup>3</sup> Up to 2x range based on tests performed by the Augmentix Corporation.

<sup>4</sup> With the SkyRange400 card in place, concurrent WWAN can only be used via external I/O (PCMCIA or Express Card, USB, etc. The SkyRange400 card will not be disabled by turning off the WiFi Catcher™ switch on the Dell Latitude XFR notebook. The SkyRange400 card will not cause the WiFi activity LED on the Dell Latitude E6400 XFR to light and does not support DCP (Dell Control Point).

<sup>5</sup> SKUs provided in this document are only applicable in the US

<sup>6</sup> Some items will not be available on the Software & Peripherals web site in all segments. For any items not available on the web, contact your Dell sales representative for more details.

<sup>7</sup> E-Port XFR works with XFR systems only and is not compatible with mainstream and ATG systems

<sup>8</sup> The Legacy I/O Media Bay Module is not hot-swappable. All other media bay modules are hot-swappable.

<sup>9</sup> Available to Federal customers only